

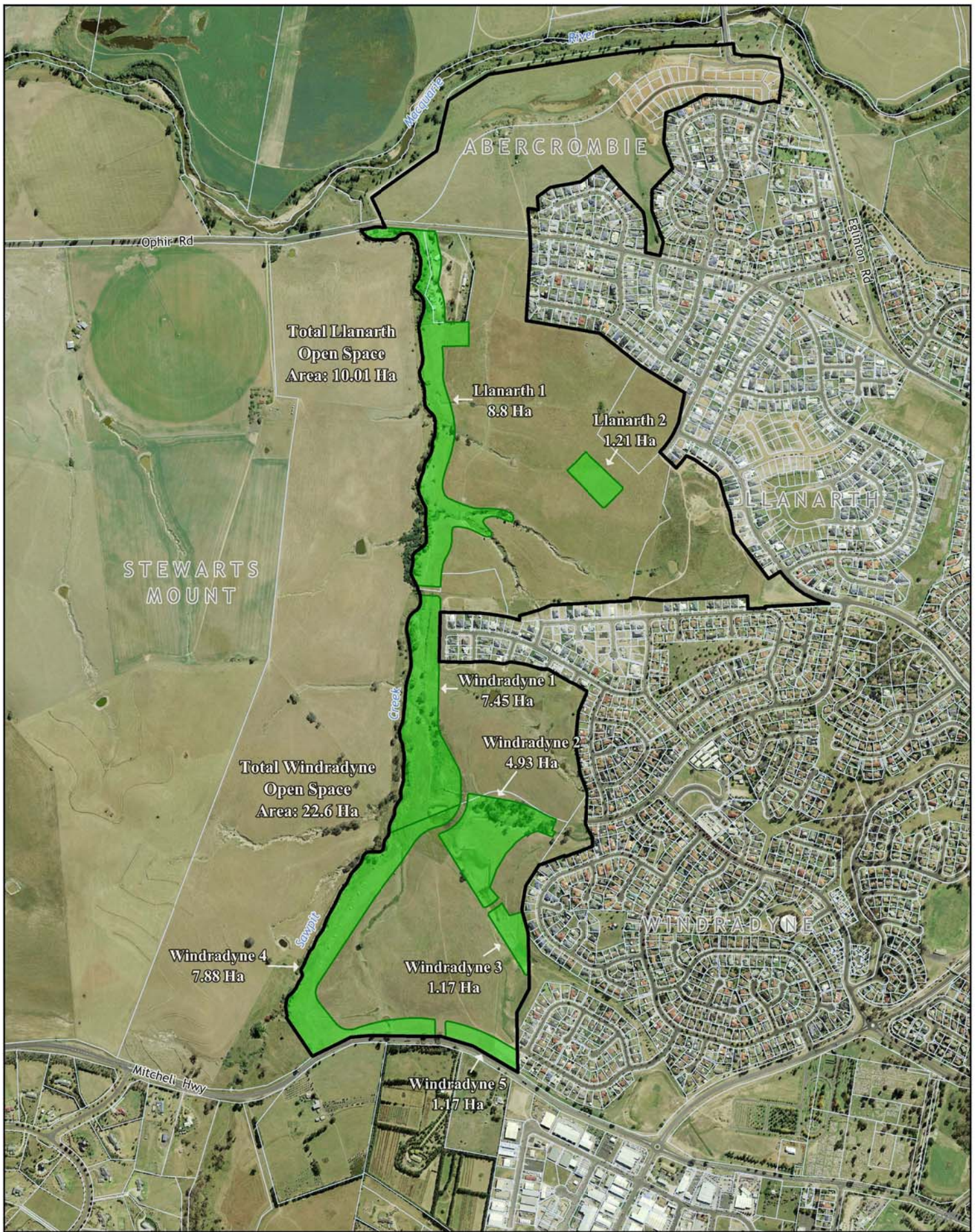
Important Notice!
 This map is not a precise survey document. Accurate locations can only be determined by a survey on the ground.
 Bathurst Regional Council expressly disclaims all liability for errors or omissions of any kind whatsoever, or any loss, damage or other consequence which may arise from any person relying on information comprised in this Plan.

Note: The colours on this Plan do not indicate landuse zones under the Bathurst Regional (Interim) Local Environment Plan 2005.
 This map was produced on the GEOCENTRIC DATUM OF AUSTRALIA 1994 (GDA94), which has superseded the Australian Geographic Datum of 1984 (AGD66/84). Heights are referenced to the Australia Height Datum (AHD) heights. For most practical purposes GDA94 coordinates and satellite derived (GPS) coordinates based on the World Geodetic Datum 1984 (WGS84) are the same.

Aerial Photography: April 2013
Contour Interval: ...
Projection: MGA94 Zone 55
Cost: ...
Date: 09/01/2014
Drawn By: GIS Section

Bathurst
Proposed Open Space
Map Scale: 1:7,500 at A3





Important Notice!

This map is not a precise survey document. Accurate locations can only be determined by a survey on the ground. Bathurst Regional Council expressly disclaims all liability for errors or omissions of any kind whatsoever, or any loss, damage or other consequence which may arise from any person relying on information comprised in this Plan.

Note: The colours on this Plan do not indicate landuse zones under the Bathurst Regional (Interim) Local Environment Plan 2005.

This map was produced on the GEOCENTRIC DATUM OF AUSTRALIA 1994 (GDA94), which has superseded the Australian Geographic Datum of 1984 (AGD66/84). Heights are referenced to the Australia Height Datum (AHD) heights. For most practical purposes GDA94 coordinates and satellite derived (GPS) coordinates based on the World Geodetic Datum 1984 (WGS84) are the same.

Windradyne & Llanarth

Proposed Open Space

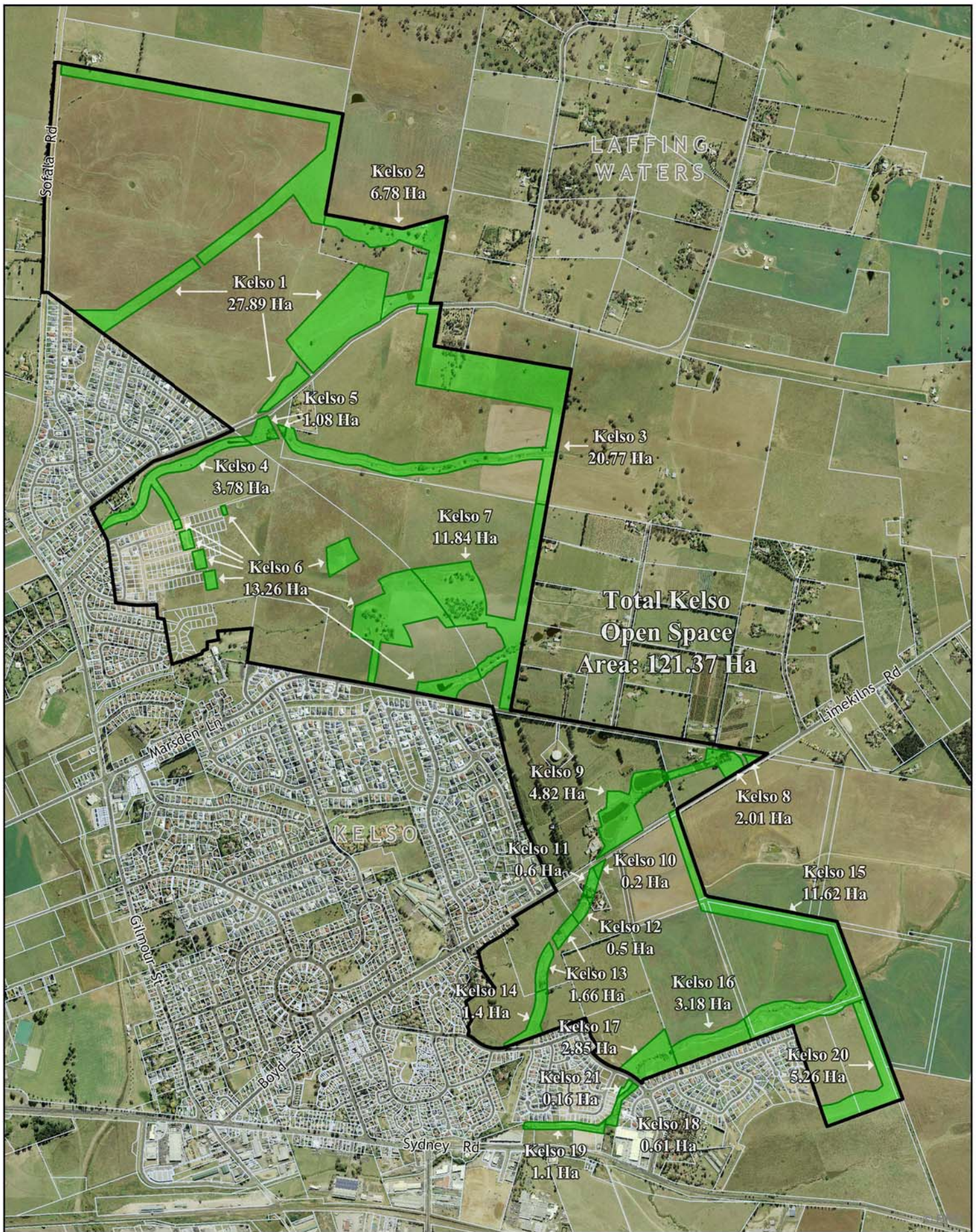


Important Notice!

This map is not a precise survey document. Accurate locations can only be determined by a survey on the ground. Bathurst Regional Council expressly disclaims all liability for errors or omissions of any kind whatsoever, or any loss, damage or other consequence which may arise from any person relying on information comprised in this Plan.

Note: The colours on this Plan do not indicate landuse zones under the Bathurst Regional (Interim) Local Environment Plan 2005.

This map was produced on the GEOCENTRIC DATUM OF AUSTRALIA 1994 (GDA94), which has superseded the Australian Geographic Datum of 1984 (AGD66/84). Heights are referenced to the Australia Height Datum (AHD) heights. For most practical purposes GDA94 coordinates and satellite derived (GPS) coordinates based on the World Geodetic Datum 1984 (WGS84) are the same.



Important Notice!

This map is not a precise survey document. Accurate locations can only be determined by a survey on the ground. Bathurst Regional Council expressly disclaims all liability for errors or omissions of any kind whatsoever, or any loss, damage or other consequence which may arise from any person relying on information comprised in this Plan.

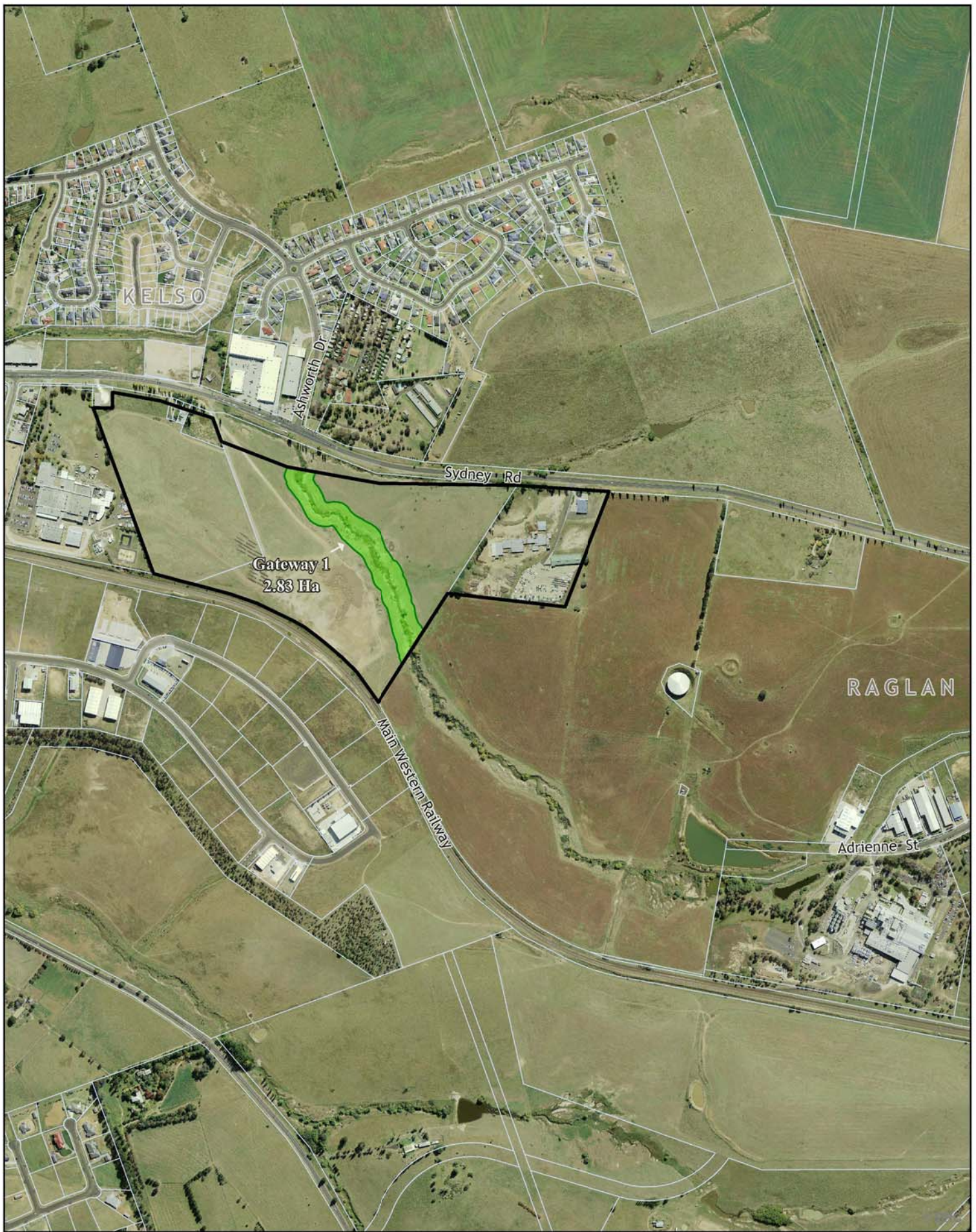
Note: The colours on this Plan do not indicate landuse zones under the Bathurst Regional (Interim) Local Environment Plan 2005.

This map was produced on the GEOCENTRIC DATUM OF AUSTRALIA 1994 (GDA94), which has superseded the Australian Geographic Datum of 1984 (AGD66/84). Heights are referenced to the Australia Height Datum (AHD) heights. For most practical purposes GDA94 coordinates and satellite derived (GPS) coordinates based on the World Geodetic Datum 1984 (WGS84) are the same.

Kelso

Proposed Open Space





Important Notice!

This map is not a precise survey document. Accurate locations can only be determined by a survey on the ground. Bathurst Regional Council expressly disclaims all liability for errors or omissions of any kind whatsoever, or any loss, damage or other consequence which may arise from any person relying on information comprised in this Plan.

Note: The colours on this Plan do not indicate landuse zones under the Bathurst Regional (Interim) Local Environment Plan 2005.

This map was produced on the GEOCENTRIC DATUM OF AUSTRALIA 1994 (GDA94), which has superseded the Australian Geographic Datum of 1984 (AGD66/84). Heights are referenced to the Australia Height Datum (AHD) heights. For most practical purposes GDA94 coordinates and satellite derived (GPS) coordinates based on the World Geodetic Datum 1984 (WGS84) are the same.

Gateway Enterprise Park

Proposed Open Space