



*Conservation Management
Tambaroora Catholic Cemetery*

CONTENTS

INTRODUCTION	2
What is a Conservation Management Plan	2
The Process	2
TAMBAROORA CATHOLIC CEMETERY	3
Date	3
Location and property description	3
Method	3
Authors.....	3
Definitions.....	3
SUMMARY & RECOMMENDATIONS	4
Summary:.....	4
Recommendations:.....	4
PART A - INVESTIGATE SIGNIFICANCE	5
Physical Description	5
Plan	5
Setting and curtilage	5
Fencing and gates.....	5
Layout and special features.....	5
Monuments and grave sites.....	5
Monumental masonry	5
Inventory sheets	5
Biodiversity: Plantings and fauna	5
Other Features.....	5
Documentary evidence.....	5
Summary of physical description.....	5
History.....	5
Land history	5
Management history.....	5
Listings.....	5
(SHI) State Heritage Inventory Database	5
Historic Themes	5
Make Comparisons	5
Summary of history.....	5
ASSESS SIGNIFICANCE	5
Criteria	5
Statement of Significance	5
Level Of Significance	5
State Heritage Inventory (SHI form)	5
Community feedback	5
INVENTORY 1	5
INVENTORY 2	5
PHOTOGRAPHIC IMAGES INDEX.....	5

INTRODUCTION

What is a Conservation Management Plan

An important tool in caring for a heritage item can be a conservation management plan (CMP). This document provides a guide for future care and use, including any new development. Dr James Kerr describes a CMP as "...a document which sets out what is significant in a place and, consequently, what policies are appropriate to enable that significance to be retained in its future use and development. For most places it deals with the management of change" (Kerr, *The Conservation Plan*, National Trust NSW, Sydney 2000: 1).

The Process

1 INVESTIGATE SIGNIFICANCE

- Investigate the physical evidence remaining
- Investigate the history of the cemetery
- Check on listings
- Decide upon relevant Local and State historical themes
- Make comparisons with other cemeteries
- Summarise what you know about the item

2 ASSESS SIGNIFICANCE

- Assess significance using the NSW heritage assessment criteria
- Prepare a succinct statement of heritage significance
- Determine level of significance
- Write up all your information including SHI form
- Get feedback from your community
- Complete your significance assessment

3 MANAGEMENT of SIGNIFICANCE

- Consider the management implications of the cemetery and its level of significance
- Analyse the constraints and opportunities
 - existing conditions
 - owner & descendant requirements
 - statutory and zoning requirements
 - other constraints
- Prepare conservation recommendations and management policies covering
 - monuments
 - maintenance
 - interpretation
 - urgent works
- Get feedback from the community
- Recommend a process for carrying out the conservation management recommendations

TAMBAROORA CATHOLIC CEMETERY

(Formerly the General Tambaroora Cemetery)

Date

26th January 2008.

Location and property description

Beside lots 51, 52, 71 and 72 outside the village of Tambaroora,
In the Parish of Tambaroora, Country: Wellington.

Method

The method used in this study is based on the Australia ICOMOS 1988 Charter for the Conservation of Cultural Significance (The Burra Charter); Conservation Management Guidelines and Heritage Assessment by the NSW Heritage Office and Department of Planning 1996; NSW Heritage Manual and James Semple Kerr's 'The Conservation Management Plan' printed by the National Trust of Australia, NSW.

Authors

Barbara Hickson Architect and Heritage Adviser using the Bathurst Regional Cemetery CMP Proforma.

All recent images, unless otherwise stated, are by Barbara Hickson.

Definitions

See appendices: The Burra Charter.

SUMMARY & RECOMMENDATIONS

Summary:

This cemetery has been in use since around 1855 and remains in use today. It has served the local communities of Tambaroora and Hill End for over 150 years. The oldest gravestone is that of Richard Cullen, an outstandingly crafted and unusual sandstone stele still in good condition. In the 1860s a Roman Catholic Chapel was erected at Camp Hill, about 100 metres from this site.

The cemetery is remotely located and difficult to access, but remains in use. It is of special significance to the German and Irish immigrants of the Catholic faith who played a major role in Tambaroora gold mining and later formed part of the Hill End community.

Approximately 80 people are recorded as being interred at the cemetery on the some 35 memorials, but as many as 240 persons may be buried here in total.

The cemetery is in need of better access and signage but is otherwise well cared for and maintained.

Recommendations:

1. That Bathurst regional Council adopt this CMP.

2. Develop a site management plan.

Include implementation of the study recommendations from Part 8 of the Bathurst Regional Heritage Study 2007, and the site specific recommendations developed as part of this CMP as follows:

- **Repairs to monuments:** Draw up a schedule of conservation work, highlighting the most urgent works. Refer to the Inventory of Memorials contained in this document, and to the 'condition' column for specific works.
- **Site Works:** In the vicinity of some memorials, remove or cut back large shrubbery that can adversely affect the particular grave sites.
- **Fencing:** Check over and continue to maintain existing fencing to exclude stock.
- **Interpretation:** Include interpretation information as follows:
 1. A sign at the cemetery gate listing known burials up to approximately 50 years ago, and a brief history of the cemetery and district.
 2. Consider making available interpretation materials in printed form or information on Council's website.
 3. A seat or place of rest, near the gate sign.
- **Maintenance:** Draw up a program of maintenance. Adopt appropriate weed control measures. Pruning is preferred rather than weeding where possible. No firewood collection and no slashing should be permitted.

- **Documentation:** Document any works carried out within the cemetery.
- **Staff resource:** Encourage Council to allocate a special officer who has an interest in the preservation of cemeteries, whose role should be to oversee the care and maintenance of rural cemeteries while encouraging local community group and / or descendants to assist.
- **Biodiversity:** Assess biodiversity by documenting flora and fauna in the cemetery and adjacent areas in the format contained in this CMP document.

3. Re-Zoning:

The rural cemeteries in the Bathurst Region are zoned 1(e) Outer Rural. Therefore rural uses of the cemeteries are permissible under the Bathurst regional (interim) LEP 2005, providing they will not have a detrimental effect on the cemetery.

It is recommended that the zones of the cemeteries be zoned as *SPI - Special Activities*, under the future Comprehensive LEP. This would ensure that the zone will assist in the conservation of these cemeteries by restricting the potential development on that land.

4. Listing:

Tambaroora Catholic Cemetery should be listed as a heritage item in the 2009 Comprehensive LEP.

5. Community Consultation:

Local members of the Hill End community, the Hill End/Tambaroora Progress Association, the Department of climate Change (Hill End Office), the Hill End family history group, and/or descendants of those buried at Tambaroora, should be encouraged to comment on, or add to, this CMP. Similarly the NPWS should be consulted.



Figure 1:

This modern headstone has been introduced into the cemetery to mark a formerly unmarked grave of Anna Marie and Michael Ackerman. It is a good example of a modern interpretation of a Victorian era stele.

PART A - INVESTIGATE SIGNIFICANCE

Physical Description

This cemetery is approximately 4 km from Hill End travelling north towards Mudgee on the Hill End Road. It is particularly difficult to locate the Catholic Cemetery as there is no signage on the passing road indicating its location. Part of the access road is closed due to a collapsed culvert where the road crosses over a gully. The culvert was supported on round logs, supported in turn by other logs, and covered over with gravel and road base. The culvert is in a state of collapse. From the culvert it is approximately a 250 metre walk to the cemetery.

The cemetery is generally well fenced in a clearing within bushland. It appears to be an old cemetery but the latest grave is dated only 1991 so the cemetery is possibly still in use. The land is well cleared within the fence portion of the cemetery.

Plan

The cemetery is roughly rectangular with scattered graves through the locations of the graves favour the centre and southern end of the cemetery.

The original cemetery area set aside was approximately 6 chains x 7 chains, or approximately 120 metres by 140 metres, with a road of 50 links or 10 metres wide. The portion of the cemetery that is now fenced is approximately 25% of the original size and may represent only the dedicated Catholic portion and some area beyond that.

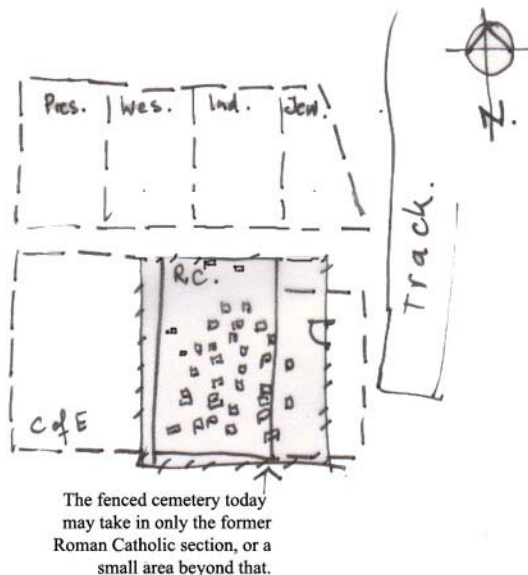


Figure 2: The general layout of the Tambaroora Catholic Cemetery. (Barbara Hickson).

Conservation Management Plan for Tambaroora Catholic Cemetery



Figure 3:
Part of the Tambaroora Parish Map showing a general cemetery notified on 9th February 1898. The town limits are shown in red on the right hand side. In this plan the cemetery is called the 'general cemetery' which later became known as the Catholic cemetery.

The cemetery known today as the Tambaroora General Cemetery was originally set aside for the Church of England school, church and parsonage in 1863, but later was rededicated as the general cemetery.

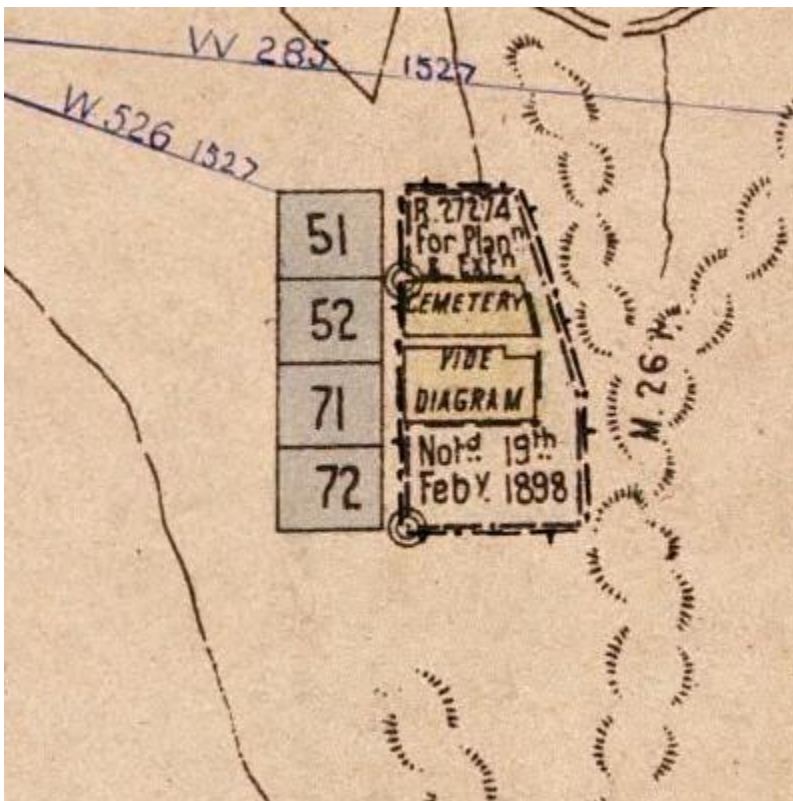


Figure 4: Parish Map illustrating the detail of the proposed general cemetery of Tambaroora.

Setting and curtilage

The cemetery is located in a clearing within the bushland and has a few trees within the boundary fence. From the cemetery the outlook is a former mining landscape to the east and dense woodland to the western and southern sides. The ground is sandy with sparse grassed covers. A rough vehicular track leads to the gate however as mentioned above, the road is impassable at present by vehicles due to a collapsed culvert further back along the road.

The cemetery is located some hundreds of metres from the nearest dwelling. Only a few houses now stand in the nearby former gold mining settlement of Tambaroora. The undulating landscape is crossed by numerous gullies and indications of the past mining activity.

The gate of the cemetery is located on the east side, and the grave stones face east.



Figure 5: A grave located in the corner of the fenced section of the cemetery.



Figure 6: The above aerial image was provided by Bathurst Regional Council. The cemetery is located in the square at the centre of the image near a triangular shaped clearing.

Fencing and gates

The fence surrounding the cemetery appears to be very old and consists of timber posts, larger strainer posts alternating with smaller posts, with three strands of rusty barbwire and chicken mesh below, and standard ring lock wire to the lower section. There is a matching meshed farm gate.

Generally the fence appears to be fairly well maintained.



Figure 7: The boundary fence of the cemetery is visible in the background of this image.

Layout and special features

It is thought that the monuments in this cemetery represent the Roman Catholic portion of the cemetery only. This statement is an educated guess based on the names on the existing monuments. Irish who would have been Irish Catholics and Germans who would have been Lutheran or Catholic for the majority of burials.

The apparent layout of the marked graves today is reasonably random across the space with the majority located within the centre and to the southern end of the cemetery. Many original burials may no longer be marked. Today's records of burials are based only on visual siting and recording of memorials. The apparent number of burials is probably much greater than those identified by headstones.

For example, at the Sunny Corner Cemetery approximately 150 to 160 burials or memorials are recorded. Today there are 30 visible grave beds or memorials representing approximately 37 known persons. Therefore less than 30% of the people buried there have a grave marker today. If it is assumed that the percentage of unknown burials is similar in the Tambaroora Cemetery, and 80 people are indicated on the 35 memorials, it is therefore possible that as many as 240 persons may be buried within this cemetery.

To commemorate one of the unmarked graves descendants of Anna Marie and Michael Ackerman have erected a new stele in the cemetery. It is sensitively designed to interpret a monument of the past without mimicking historical designs. It is a tall slender stele with a modest cambered top and a hint of shoulders. The stele is engraved with decorative writing.

Monuments and grave sites

The cemetery monuments represent a great range of materials and monument types. Upright steles in marble and sandstone display a large range of decoration and shapes. Shapes of upright stele include semicircular and gabled topped profiles with cutaway shoulders, pedimented and cruciform. Strong carvings in relief include draped urns, angels, ribbons and floral emblems. The cemetery is a varied and interesting collection of headstones.

Many memorials are exceptional as identified in the Figures below.



Figure 8: Margaret Knight: semicircular sandstone stele with outstandingly crafted angel at the apex.

Figure 9: Nicholas Macryannis: grave marked with a gothic topped stone heavily embellished with a row of floral emblems across the top and attached pillars to the sides.

Figure 10: Richard Cullen's memorial is a sandstone stele with a pediment top with carved cross and an embedded marble heart at the base. This memorial is also the oldest in the cemetery.

Figure 11: William Harvey's white marble cruciform stele.

Monumental masonry

With such a range of monuments it is to be expected that there is also a large range of craftsman stone masons that have contributed to this cemetery. The known stone masons include:

- D B Atkin of Mudgee.
- T. Collier and Son of Mudgee.
- A.G. Burns.
- C. Burns.
- Burns of Bathurst.
- Andrews Bros. of Sydney.

Many monuments, especially the older ones, or those that have been reset in their support base have no maker's inscriptions.

The quality of headstones and their carvings is high. The oldest standing stone, the grave stone of Richard Cullen in figure 10, above, has a very unusual inset of a marble heart. Nearby in the cemetery is another of these hearts, which has become dislodged from its original stone, (Refer 5 of the Images appendix).

Inventory sheets

A description of most of the older grave plots or headstones is included at the back of this CMP. The inventory contains more detail on the style and type of memorial and a condition assessment.

Biodiversity: Plantings and fauna

The cemetery as noted above is an area of bushland or open forest. A survey of the site undertaken in September 2003 by staff from former Evans Shire Council recorded the following information about the plants in the Tambaroora Catholic cemetery:

Landform description: North easterly aspect, flat, mid slope.

Structural formation class: Open forest, no understorey, grassland.

Dominant Eucalypt Species: Scribbly gum, (Eucalyptus Rossii), Yellow box (Eucalyptus melliodora), and cypress.

Ground covers: Everlastings, Native geranium, Matt rush, Native plantain, Heath, Bush pea, Bush wax lip orchid, Bush pea, Sedge, Early nancy, Golden Orchid, Oxalis, Rock fern, Kangaroo Grass.

Shrubs: Biddy bush, Acacia.

Weeds: Blackberry, Mistletoe.

General health or condition of remnant forest: undisturbed, grassland.

Local Significance: Surrounded by open woodland.

Management Issues: Rabbit control, weeds

Overall Conservation Asset description: Grassland community may be significant, possible seed source, check for later flowering.

The recommendations for future biodiversity management include:

Weed control, Pruning rather than weeding where possible, Rabbit control.

The Biodiversity Conservation in the Sheep-Wheat Belt of NSW June 2007 survey

By the Department of Environment and Climate Change (DECC), was carried out to assess the status and extent of endangered ecological communities and threatened birds and other fauna across NSW sheep-wheat belt did not include this cemetery.

Conservation Management Plan for Tambaroora Catholic Cemetery

Four cemeteries within the Local Government Area included in the above survey were: Rockley, Peel, Sofala and Trunkey General. Observation of the Tambaroora Cemetery at the present time, in comparison to those above, and considering the vegetation recorded in the Evans Shire Council survey above, indicates that the surrounding open bushland may have scored a higher than average score in Habitat Complexity.

In other words the setting of this cemetery may present a woodland with better than average biodiversity structure, although no understorey shrubs are recorded. Good habitat features, such as logs, gulleys and boulders are present. It should be treated with consideration as a possible high scoring habitat and hence a possible refuge for fauna species. The surrounding land is under the control of the Department of Environment and Climate Change.

A site visit at a different time of year, e.g. the spring, may help identify bulbs and spring flowering plants that will not be evident for the rest of the year.

No fauna were recorded within the cemetery or within the vicinity at the time of the authors site visit.

No fauna were noted on existing surveys. In order to further assess the biodiversity of the area future management is recommended.

On future site visits any fauna observed should be recorded in the following table form and added to this CMP:

Table 1: How to record observed fauna.

Fauna Record			
Xx minute period	Type observed	Number observed	Suggested by indirect observation
Birds			
Mammals			
Reptiles			

Other Features

No other features of note were recorded.

Documentary evidence

Present records are based on visual recordings of grave markers and include some 80 indicated on 35 memorials. The burials, or memorials, in this cemetery represent 30 family surnames.

There are a number of references to these burial lists which include:

1. Evans Local Government Area – Cemetery Register, (North), 2003.

2. Site visit on 29th September 2007 by B.J. Hickson.

A survey by Evans Shire Council in September 2003 also recorded the plants listed included in the biodiversity section above and some black and white photographs from this survey are on Bathurst Regional Council files.

Many of the known burials are also recorded in the NSW government on line records at <http://www.bdm.nsw.gov.au>. The correct name must be known to the searcher to be able to access it online. Hill End was the registry office for the Tambaroora area.

Because it is believed that this cemetery was largely a Catholic cemetery, church records of burials may also exist at the Bathurst Catholic Diocese.

The Hill End family history group may be able to assist in providing information regarding individuals buried in this cemetery.

Summary of physical description

- This cemetery is remotely located on the western side of the former village of Tambaroora on the Hill End Road. Access to the cemetery is difficult and is not signposted.
- The cemetery is generally cleared land with only a few trees and sandy soil supporting grass ground cover.
- The surrounding setting of the land is bushland and may present an open woodland with better than average biodiversity structure.
- The cemetery is now known as the Catholic Cemetery but was once part of a General Cemetery according to Parish map data.
- There is an exceptional range of monument types, in design and style.
- The cemetery is isolated and is probably rarely visited, except by descendants.
- The cemetery is in fairly good condition with well maintained fences.
- About 35 remaining legible memorials represent some 80 people.
- The monument dates range from 1859, representing almost 150 years of service.
- The monuments face east and towards the entry gate.
- The work of many stonemasons is included here on this cemetery such as the Burns family members, Atkin and Collier of Mudgee and Andrews of Sydney.
- The cemetery is still in use.
- There is an excellent example of a recent memorial to an unmarked grave.



Figure 12: Unusual reclining bed monuments to members of the Mullins family.

History

Land history

According to the National Trust assessment, this cemetery was in use from around 1855. It was not notified until 9th February 1898, over 40 years after the first known burial. It was dedicated on the 8th October 1998.

The oldest headstone of Richard Cullen dates from 1st December 1859. The most recent memorial is that of Rose Kevorkian, 11th March 2004, covering a period of almost 150 years.

On the Parish Map of 1884 there are a number of notes pertaining to this cemetery. There was a general notice on the 13th April 1892 that land was reserved for further extension of the cemetery to the north, and south of the cemetery.

The reserve for plantation on the same areas were revoked on 19th February 1998. Trustees were appointed for the Wesleyan burial ground on the 17th December 1998. Trustees were appointed for the Church of England burial ground on the 28th December 1998. The implication of the above Trustees is that there were some burials for these denominations and that not all burials at this cemetery are Roman Catholic.

In the 1860s a Roman Catholic Chapel was erected at Camp Hill about 100 metres from this site. The cemetery initially served the Tambaroora population however almost no headstones remain from that period. The cemetery then served the Hill End community and still serves them today.

Tambaroora history

The following brief history of Tambaroora is taken from the Hill End Family History website which is sourced from Cook & Garvey: 'The Glint of Gold', 1999, by Kerrin Cook and Daniel Garvey.

Tambaroora is an Aboriginal word meaning 'place of the ibis'.

Gold was found first at Dirt Holes in 1851 and then later at the head of Tambaroora Creek. Lawlessness and robbery were rife in 1852, so a resident Gold Commissioner and some troopers were sent there.

In 1852 James McEachern came to Tambaroora with two of his brothers and opened a Store. Thomas Paten arrived during the original goldrush, opened a store, became the registrar of Births, Deaths and Marriages and later was an alderman of the Borough Council. Edward Long also had a store and became the town's chief gold buyer, (he was robbed twice). A market garden was planted by William Wade.

A Wesleyan Church, (made of bark), was erected in 1852. The Anglicans also built a church after the first service conducted in the Gold Commissioner's house was well attended, (located near the present General Tambaroora cemetery).

By 1855 Tambaroora was the most populated area in the Turon district with about 5,600 people. In the 1861 census for Tambaroora, it showed that 2,235 individuals were living in the area, and this included 1,625 Chinese.

By 1899 all active mining had ceased, having gleaned over 50,000 ounces, (1,418kg) of gold out of the creeks and gullies.

A Post Office was opened on the 9th July in 1852 and in January 1861 W. J. Slack was Postmaster. A building was rented from T. Peters in 1862 for the Post Office. The Post Office closed on 31st March 1923. The Post Office was opposite the Hargraves Hotel, a few steps is all that remains of the Post Office.

A public School was opened in December 1858 and closed in December 1928.

Today there is little left of the village of Tambaroora, apart from a few houses along the road and the remnants of the chimney of the Hargraves Hotel once owned by Alfred Thomas Dagger, who took over the hotel license soon after the death of his father, James Dagger, who died on 20th December 1900.

The following extracts are from **Dr Rob McLachlan's** Bathurst Regional Thematic History: which accompanied the **Bathurst Regional Heritage Study 2007**.

The interest of gold seekers in the Tambaroora and Hill End goldfields came about following the finding of gold in the area by Aborigines. One of these associated finds, the Kerr Nugget, was made by four Wiradjuri shepherds, one of them being Jemmy Irving, in the employ of Dr Kerr, a local doctor resident in Peel.

The discovery of gold in quartz on Louisa Creek, just to the north of the Bathurst Regional Council boundary, caused a rush in that general area, which led in turn to the opening up of the nearby Tambaroora field. Many more discoveries and workings were scattered throughout the Bathurst Regional Council area.

The search was initially for alluvial gold, that is the accessible sands and gravels of watercourses were panned or sluiced for gold. Gold was also recovered from dry diggings, such as at Tambaroora. A characteristic feature of the early Turon field was the working of side gullies and ravines for gold.

The rapid collapse of Tambaroora, an alluvial mining centre, and the sudden rise of Hill End, a reef-mining centre nearby, reflects the major transition taking place. Virtually nothing remains today of the once bustling settlement of Tambaroora.

Mining companies reworked some of the old alluvial diggings with extensive sluicing operations, notably along the Turon around Sofala until late in the nineteenth century. Large scale - steam pump powered - sluicing operations had already begun at Sofala in the 1850s. Early in the 20th century, the Tambaroora Sluicing Company reworked the old alluvial diggings in Golden Gully employing high-pressure hoses.

Historic Pictures from the Picture Australia website:

There are many historical images of Tambaroora and Hill End taken principally during the years from 1871 to 1876. Care must be taken to differentiate between the Tambaroora images and those of Hill End as they are often incorrectly labelled. By the time Merlin came to Hill End Tambaroora, as the centre of gold mining, was in decline and Hill End was thriving.



Figure 13: 1816-1878? - A kangaroo on the Tambaroora goldfields. George Lacy.



Figure 14: Tambaroora horse drawn omnibus, Tambaroora.

Management history

Presumably, the cemetery was initially managed by trustees. There are references to this on the Parish maps. Later the cemetery was managed by Evans Shire Council until amalgamation with Bathurst City Council in 2005. It is now managed by Bathurst Regional Council.

Listings

This cemetery has no statutory listing at the present time. In the recent Bathurst Regional Heritage Study, the cemetery was recommended for listing at the local level. This study supports that recommendation.

Tambaroora Catholic Cemetery was listed by the National Trust of Australia on 26th May 1986. In March 1986, S. Lavelle carried out an inspection and recorded a description as part of the assessment by the National Trust.

(SHI) State Heritage Inventory Database

The cemetery is recorded in the SHI database which is maintained by the Bathurst Regional Council.

Historic Themes

The following table includes NSW heritage themes relevant to this cemetery. For a more complete list of themes refer to the 'NSW Historical Themes' on the Heritage Branch, Department of Planning website.

Table 2: NSW Heritage Themes relevant to the Tambaroora Catholic Cemetery.

Australian Theme	NSW Theme		Notes	Examples
2 Peopling Australia	Ethnic influences	German and Irish miners	Activities associated with common cultural traditions and peoples of shared descent, and with exchanges between such traditions and peoples.	Many Irish and German immigrants were present on the Tambaroora gold field.
3 Developing local, regional and national economies	Events	Mining accidents	Activities and processes that mark the consequences of natural and cultural occurrences.	Accidents played a large role in the cause of death. Mining was a dangerous activity especially in remote areas.
3 Developing local, regional and national economies	Health	Poor living conditions	Activities associated with preparing and providing medical assistance and/or promoting or maintaining the well being of humans.	Poor living conditions on the gold fields led to unhealthy conditions made worse by remoteness.
4 Building settlements, towns and cities	Towns, suburbs and villages	Gold mining settlement	Activities associated with creating, planning and managing urban functions, landscapes and lifestyles in towns, suburbs and villages.	Interesting changes in allocation of cemetery space as the government tried to respond to rapidly growing, and declining, communities.
4 Building settlements, towns and cities	Land tenure	Cemetery space	Activities and processes for identifying forms of ownership and occupancy of land.	Allocated space for cemeteries.
8 Developing Australia's cultural life	Creative endeavour	Stone masonry	Activities associated with the production and performance of architectural, artistic and other imaginative, interpretive or inventive works.	Craftsman stone masons.
8 Developing Australia's cultural life	Religion	Roman Catholic	Activities associated with particular systems of faith and worship.	Initially the cemetery was the general cemetery and then the Roman Catholic cemetery.
9 Marking the phases of life	Birth and Death	Death	Activities associated with the initial stages of human life with the final stages of human life and disposal of the dead.	Burial ground.

Make Comparisons

There are many other small cemeteries within the region. However those associated with past mining activities are probably the most similar to the Tambaroora Catholic Cemetery.

Other important reef mining localities, between the 1850s and the early 1900s, include; Hill End, Sally's Flat, Sofala, Wattle Flat, Mitchell's Creek, Dark Corner, Gilmandyke, (south of Rockley), Napoleon Reef, (Walang), Clear Creek, (Peel), Caloola and Wiagdon.

Many of these localities provide similar burial grounds. Similar comparisons can be made with the former Catholic Cemetery at Sofala and at Sally's Flat.

Separate cemeteries for different denominations were favoured in the 19th century by many. Therefore mining communities subsequently ended up with a number of cemeteries. The community of Wattle Flat has four, Sofala has at least three, and Tambaroora had three, (possibly four).

Summary of history

- Tambaroora life as a village was reasonably short lived, from when gold was discovered in 1851 to the decline in the 1860s, with the rise of Hill End gold.
- By 1855 Tambaroora was the most populated area in the Turon gold mining district with about 5,600 people. By 1861 the census showed that 2,235 individuals were living in the area, including 1,625 Chinese.
- This cemetery also served the Hill End settlement.
- The oldest headstone is that of Richard Cullen died 1st December 1859. The cemetery has been in use for approximately 150 years.
- This cemetery was notified on 9th February 1898, almost 40 years after the first known burial. It was dedicated on the 8th October 1998.
- After the discovery of gold at nearby Dirt Holes the first store in Tambaroora was built in 1852, then the Post Office, churches and many houses followed. Many were built of temporary materials, such as bark roofs and slab walls.
- Although originally planned as general purpose, this cemetery is believed to be of a predominantly Catholic denomination.

ASSESS SIGNIFICANCE

Criteria

Following the Heritage Branch guidelines, a statement of significance is developed by working through the following assessment criteria. (adopted from the Heritage Office CMP guideline):

Criterion (a) - Historical Significance - an item or place is important in the course, or pattern, of NSW's cultural or natural history, or the cultural or natural history of the local area.

Tambaroora Catholic cemetery has been in use for around 150 years, since the initial gold rush to the locality in 1852. It has served the Tambaroora gold field village and later the Hill End community.

Criterion (b) – Social Significance - an item or place has strong or special association with the life or works of a person, or group of persons, of importance in NSW's cultural

or natural history, or the cultural or natural history of the local area. This might include a local family of note, pioneers, or soldiers.

This cemetery is especially significant to the German and Irish immigrants who formed a significant part of the Tambaroora gold mining activities and later the Hill End community. Today the villages of Hill End and Tambaroora combined have a very small population, but the cemetery is a lasting memorial to the much larger populations of the 1850s to 1870s.

Criterion (c) – Aesthetic Significance - *an item is important in demonstrating aesthetic characteristics and/or a high degree of creative or technical achievement in NSW or the local area. Consider the work of the monumental masons.*

An impressive range of monuments from many craftsman stone masons have contributed to this cemetery including Sydney, Bathurst and Mudgee monumental masons. The quality of headstones and their carvings is high.

Criterion (d) – Religious Significance - *an item has strong or special association with a particular community or cultural group in NSW, or the local area for social, cultural or spiritual reasons.*

This cemetery is especially significant to people of the Catholic faith.

Criterion (e) – Educational or Technical Significance - *an item has potential to yield information that will contribute to an understanding of NSW's cultural or natural history, or the cultural or natural history of the local area.*

The great range of monuments provides a good technical resource on stone masonry. The setting of the cemetery may present a woodland with better than average flora and fauna biodiversity structure. The grassland community may be significant.

Criterion (f) – Rarity - *an item that possesses uncommon, rare or endangered aspects of NSW's, or a local area's cultural or natural history.*

A few of the headstones are exceptionally rare, e.g. the headstones of Richard Cullen, and of James Peddar.

Criterion (g) – Typical or Representative - *an item is important in demonstrating the principal characteristics of a class of NSW's or a local areas, cultural or natural history.*

The cemetery is a good example of a former mining community cemetery.

Statement of Significance

Tambaroora Catholic cemetery has been in use for around 150 years, since the initial gold rush to the locality in 1852. It has served both the Tambaroora gold field village and the Hill End community.

This cemetery is especially significant to the German and Irish immigrants of the catholic faith who took a major role in Tambaroora gold mining and later Hill End community.

Conservation Management Plan for Tambaroora Catholic Cemetery

The cemetery is a lasting memorial to the much larger populations of the 1850s to 1870s of Tambaroora and Hill End and is a good example of a former mining community cemetery.

An impressive range of quality monuments from many craftsman stone masons have contributed to this cemetery.

The setting of the cemetery may present a woodland with better than average flora and fauna biodiversity structure. The grassland community may be significant.

Level Of Significance

This cemetery is of local significance.

State Heritage Inventory (SHI form)

A SHI form is available from Bathurst Regional Council.

Community feedback

Before completing the assessment community or descendant feedback on the initial work undertaken should be obtained.

INVENTORY 1

Inventory of burials and memorials. Recorded by B. Hickson 13th December 2007.

Name	First Names	Date of death	Age	Denomination	Cemetery No.	Additional Inscription	Description	Condition
BURNS	Vera Raymund Septimus	13.03.1974 23.07.1976	69 74			Verse: 'Requisat in Pace'.	A larger bed with natural stone surround gravel ledger and topping and natural rock up stand and metal plaque.	Fair.
OLLEVOU	Rudolph St Hilaire	06.09.1987				OLLEVOU Rudolph St Hilaire 2 nd /2 nd anti tank regiment RAA 05.11.1916 to 06.09.1987.	A recent grave with rendered surround and gravel surface on the ledger and natural rock up-stand with a metal plaque.	Good.
WADE	Harry	12.04.1948.					A small cross engraved WADE Harry d. 12.04.1948.	N/A
THOMPSON	Peter John	16.04.1955	3			In Memory of THOMPSON Peter John d 16.04.1955 aged 3yrs.	A baby's grave, a small rendered masonry surround white gravel ledger and up-stand with marble plaque becoming illegible.	Fair Inscription becoming illegible.
MAC- RYANNIS	Nicholas George J P John Demetrius A	09.09.1903 19.11.1903 25.01.1913 29.02.1920	35 28 40 50			In Loving Memory of MACRYANNIS Nicholas d 09.09.1903 aged 35yrs. Also MACRYANNIS George J P d 19.11.1903 aged 28yrs. Erected by their loving sister Ellen Macryannis. Also John T MACRYANNIS d 25.01.1913 aged 40yrs. Verse: 'I will trust thee also' MACRYANNIS Demetrius A d 29.02.1920 aged 50yrs.	A double bed with an elaborate wrought iron railing around it which features wreaths and flowers and crosses on corners and centre posts. An up-standing gothic monument features flowers embossed around the top of the curve of the gothic top of the stone and attached pilasters down the side. This stone has been repaired at the base and sits on a sand stone plinth.	This stone has been repaired at the base and sits on a sand stone plinth.
MAC- RYANNIS BLEUTT	Vacillus Matilda Ann	12.07.1889 01.10.1902 16.07.1910	67 64 50			In Loving Memory of our dear father MACRYANNIS Vacillus d 12.07.1889 aged 67yrs. Our dear mother MACRYANNIS Matilda d 01.10.1902 aged 64yrs. On the other side of the book it is written also their daughter BLEUTT Ann d 16.07.1910 50yrs. Erected by their loving	A single bed with surround in rendered masonry and an elaborate up stand with a book of life in marble and a marble pediment at the top with two hands shaking. There is a small plaque. T. Colleyer and sons – Mudgee.	Good.

Conservation Management Plan for Tambaroora Catholic Cemetery

						daughters Ellen and Agnes.		
KIMM	Mary Ann Mavis Dorothy	29.01.1923 10.06.1923	32 7		10 11	nee Myers; w/William G dau/William G & Mary Ann It reads: In loving memory of our dear mother and sister KIMM Mary Ann and KIMM Mavis Dorothy Mary d 29.01.1923 aged 32yrs. Mavis 10.06.1923 aged 7yrs.	A double bed with an elaborate pseudo stone surround which is in rendered masonry with tow marble plaques at the end which reads 'Mum' & 'Mavis'. Ornamental vases at the top and an up-stand with the marble plaque which has fallen from its original position.	Marble plaque fallen and requires re-adhering.
ACKERMAN	Anna Marie Michael	17.06.1904 06.08.1908	75 79			ACKERMAN Anna Marie (nee KROHMAN) b. 28.04.1828 Budenheim Mainz Germany d. 17.06.1904 at Hill End 75yrs. And husband ACKERMAN Michael. b.28.11.1828 Budenheim Mainz Germany d. 06.08.1908 at Hill End 79yrs.	A very old timber picket fenced grave plot that is a ruin but still standing and what appears to be a new cast monument or stele Obviously an example of a new memorial where the old one has been lost.	Re-created headstone.
REYNOLDS	Bridgett	14.05.1873				In Memory of g.g.grandmother who is buried in this cemetery 29.01.1842 aboard the William Sharpels. REYNOLDS (nee Englishby) Bridgett b. 1820 d.14.05.1873 Native of Tinura County Louth Ireland arrival Australia.	A small up-stand alone with a metal plaque a new memorial. This sign was erected by Allen Keith Reynolds in 1992.	N/A
MAHER	John	14.02.1896	65			MAHER John acc. Killed 14.02.1896 aged 65yrs. Verse: 'May he possess a heavenly crown, gods chooses people where in heaven above through peace and love, hope to meet him their.' Erected by his loving wife Ellen Maher – RIP.	A double bed with wrought iron surround and a rounded topped with shoulders sandstone monument which has been displaced from its base and is now leaning against the fence.	Broken at base – could be re-stood.
MCEWAN	John E Mary Bridget	17.06.1887 01.08.1891 13.06.1898	60 32 74			The first reads In Memory of McEWAN John E d 17.06.1887 aged 60yrs. Also McEWAN Mary d 01.08.1891 aged 32yrs. Also McEWAN Bridget d 13.06.1898 aged 74yrs. Born in County Caven Ireland Verse: 'May they rest in Peace'. Also PHELAM Christina d. 27.02.1921 aged 62yrs.	A marble up standing monument the first with gothic top and cut away shoulders the 2 nd rounded with shoulders both in marble and on sand stone bases. The double bed has a wrought iron railing. This monument by J. Burns of Bathurst.	Good some loss of lead lettering.
PHELAM	Christina	27.02.1921	62					

Conservation Management Plan for Tambaroora Catholic Cemetery

ROBINSON	Susan	26.10.1866	12			Sacred to the memory of ROBINSON Susan who departed this life 26.10.1866 aged 12yrs	This monument by D B Atkin of Mudgee.	Good.
NORTON	Margaret	17.07.1876	42			NORTON Margaret 17.07.1876 42yrs Born in the County Caven Ireland. Verse: 'May they rest in Peace – Amen'.		
TOOHEY	Susan	04.10.1916	66			TOOHEY Susan who departed this life 04.10.1916 66 yrs. Born in the County Caven Ireland. Verse: 'May she rest in Peace' – Amen.		
TOOHEY	Susan	04.10.1915	86			It reads Sacred to the memory of TOOHEY Susan d. 04.10.1915 aged 86yrs. Noting perhaps the same person and dates. And her beloved son TOOHEY Thomas d 17.04.1918 aged 54yrs. Verse: 'May their souls rest in peace'.	The next is a tall marble pedestal set on a large shaped sand stone base on top surmounted by a cross and a north cross. A single bed with an elaborate wrought iron railing with crosses surmounting the corners and half way.	Good.
	Thomas	17.04.1918	54					
ROBINSON	James	05.04.1933	81			Loving Memory of ROBINSON James d. 05.04.1933 aged 81yrs. Rest In Peace. Erected by his niece Frances Norton.	A single bed with a rendered masonry surround and the ledger gravel the up-stand at the end holds a marble book of life A G. Burns Memorial.	Good.
KEVORKIAN	Rose Ann	11.03.2004				KEVORKIAN Rose Ann b. 05.03.1942 d.11.03.2004.	Monument in the back corner the first is a piece of natural stone set in a concrete with a small metal plaque.	N/A
BURNS	Patrick Richard	14.01.1991	13			BURNS Patrick Richard d. 14.01.1991 aged 13yrs. Verse: 'A gentle boy taken so long sadly missed by his family' – Rest in Peace.	a single bed with a surround of natural local slate stone laid with the surface of loose pebbles of quartz planted with a central bush. The up-stand is cambered at the top sandstone with a marble plaque and it contains the photo of the deceased.	N/A
GUDGEON	James Francis	06.04.1866	1			The headstone reads In Loving Memory of James Francis GUDGEON the beloved son of John & Sarah d. 06.04.1866 aged 1 yr & 5m. The verse is illegible.	a standing round top memorial with a footstone, the footstone has the initial J F G – 1866.	Fair Inscription becoming illegible. Footstone leaning.

Conservation Management Plan for Tambaroora Catholic Cemetery

MALONEY	Alice	17.11.1865	62			Sacred to the Alice MALONEY d.17.11.1865..?? aged 62yrs & 5 m. Also Edward MALONEY husband of the above who died 06.08.1878??? aged 62yrs – Rest in Peace. In Memory of Alice, Daniel, Sydney, and Roy dearly beloved children of F & C ROBERTS. Sacred to the Memory of Jesiah ROBERTS d. 16.11.1896 aged 53yrs. Verse: 'Dearest father thou have left us we thy loss most deeply feel but is god that have bereft us he can all our sorrow heel'. May they rest in Peace. In Loving Memory of ROBERTS Catherine d 22.04.1912 Verse: 'May she Rest in Peace' – Amen.	A double bed surround with two standing monuments surrounded in elaborate wrought iron. The first is a low curved sandstone monument In the same bed is another standing monument which is missing the top part which was probably a cross surmounting the ogee style shaped sand stone stele- which reads Although this is another monument presumably been placed their and not originating from this site. To this same monument: In Loving Memory of ROBERTS Catherine.	Fair
	Edward	06.08.1878	62					
ROBERTS	Alice, Daniel, Sydney, Roy ¹							
	Jesiah	16.11.1896	53					
	Catherine	22.04.1912						
STEPHAN	Rose	28.09.1867				Sacred to the Memory of STEPHAN Rose born at Carvough County Tyrone Ireland. 15.08.1842 died Hill End 28.09.1867 also Jacob James STEPHAN died Hill End 20.02.1868 aged 6 months.	A half round standing monument in sandstone with a footstone, the footstone is now illegible. The monument reads: There is a single line of text however it is illegible. Perhaps a verse 'Lost and gone before'.	Good.
	Jacob James	20.02.1868	6m					
CULLEN	Richard	01.12.1859	46			Sacred to the Memory of CULLEN Richard died 01.12.1859 aged 46yrs. Also James CULLEN died 17.05.1870 aged 60yrs & 6 m. – also Rose Levenia NICHOLS also WILLARD Harold J Then words such as Requisat at Pace but that have been covered by another recessed and later addition a small heart engraved in affectionate remembrance of my dear brother. Below that the words William 'uames' presumable James CULLEN .	A well crafted standing monument in sand stone with a pedimented top and cross enclosed in the pediment and reads.	Good.
NICHOLS	James	17.05.1870	60					
	Rose Levenia							
WILLARD	Harold							
CULLEN	William James							

¹ The four children of Jesiah and Catherine Roberts are listed on the Maloney headstone.

Conservation Management Plan for Tambaroora Catholic Cemetery

WILLARD	James Sydney	26.10.1908	77			In Loving Memory of James Sydney WILLARD d 26.10.1908 aged 77yrs. Verse: 'Peace to his gentle spirit'. The memorial by J. Burns.	Next is a standing monument in marble half round top with cut away shoulders Semi surround to this grave in two layers of brick work.	Fair Some staining.
PEDDER	James	30.05.1881	24			In Memory James PEDDER acc. Killed 30.05.1881 aged 24yrs. Verse: 'He is gone from the bosoms that loved him he was called on a sudden to part from the mother who lifelong had proved him from the dear friends of his heart, May his soul rest in peace – Amen' Erected by his friends.	A single standing half round with cut away shoulders in sand stone monument engraved with a cross at the top: This was quite a beautifully crafted monument.	Good.
HARVEY	William F Mary	20.01.1912 08.06.1915	77 77			It reads: HIS In Loving Memory of William F HARVEY d. 20.01.1912 aged 77yrs. Erected by his loving wife and children. Also Mary HARVEY wife of the above d.08.06.1915 aged 77yrs. Verse: Then yet though we weep or the grave of our lost one know that it holds but the beautiful clay the soul hath returned to the arms of its maker and their to abide the great coming day.	Monument within a double bed wrought iron surround and the monument is cruciform in marble with writing in lead lettering, some of which is starting to fade away. To one side there is also a small marble plaque on a stone which reads: 'mother'.	Good.
SARGANT	George C J	23.09.1892	21			In Memory of George C J SARGANT acc. Drowned in the Macquarie River 23.09.1892 aged 21yrs & 10mths. RIP.	Single bed with wrought iron surround and a beautifully carved memorial sandstone monument with gothic shaped top. This monument also has a footstone but is well buried in the earth.	Inscription fading.
MULLINS	John Mary William James	16.10.1894 06.08.1926 14.08.1924	54 84 17			Sacred to the Memory of our dear father MULLINS John d.16.10.1894 aged 54yrs. And dear mother MULLINS Mary d.06.08.1926 aged 84yrs. RIP. On the right hand side similar plaque to the memory of our dear brother MULLINS William James d 14.08.1924 aged 17yrs. RIP.	A pair of reclining monuments rendered masonry with tiled ledgers and marble plaques which are laid in the centre of the ledger. The ledgers are corroding away and breaking up.	Poor Edges breaking away.
O'REILLY	Patrick Joseph Edward	08.09.1886 27.12.1929	17 67			The one at the base reads: Patrick Joseph O'REILLY d. 08.09.1886 aged 17yrs. The two fallen ones	A double bed with a shaped rendered surround the ledger possibly lightly paved and sunken a central vase and a plinth at	Up-stand and plaque have fallen.

Conservation Management Plan for Tambaroora Catholic Cemetery

	Rosannah Mary Joseph	09.03.1934 13.02.1900 16.12.1901	67 65 73			Edward O'REILLY d. 27.12.1929 aged 67yrs. & Rosannah O'REILLY d. 09.03.1934 aged 67yrs. The 2 nd plaque on the up stand reads: O'REILLY Mary d. 13.02.1900 aged 65yrs. & Joseph O'REILLY d. 16.12.1901 aged 73yrs.	the back with Rest in Peace embossed in it. The actual up stand has fallen and there are two marble plaques on the up-stand and one on the base.	
KNIGHT	Margaret	26.08.1975	27			Sacred to the memory of Margaret KNIGHT acc. Drowned in the Macquarie River aged 26.08.1875 aged 27yrs. Verse: 'May her soul rest in peace'.	A single standing stone, a low round arch with an elaborate carved angel with wings on the top half of the stone.	Fair.
GROSS	Rachael Mary	07.01.1877	11m			Sacred to the memory of Rachael Mary GROSS d.07.01.1877 aged 11m & 16 days. Verse: 'Weep not for me my parents dear I am not dead but sleeping here'. Difficult to read the rest of the verse but..... my days are grave you prepare you to follow me.	A low sand stone monument with a footstone, the monument itself has a low flat round surface and one decoration is missing.	Fair.
HOPMAN AMIOT	Elizabeth William	11.06.1907 11.04.1890	68 31			It reads In Loving Memory of Elizabeth HOPMAN d. 11.06.1907 aged 68yrs. Erected by her loving children. Also William AMIOT who was acc. Killed 11.04.1890 aged 31yrs. Verse: 'Sweet Jesus have mercy on their souls'.	A large standing well crafted half round monument with fern leaves and a bow at the top, the surround is a simple wrought iron single line fence on top of a rendered base quartz. The monument is marble by Andrews Bros. of Sydney.	Good. Ledger needs weeding.
ARMSTRONG TANNER	Annie Mark Arthur Basil	05.02.1930 17.09.1906 20.09.1917	34 63 21			The book of life reads Sacred to the Memory of Annie ARMSTRONG d. 05.02.1930 aged 34yrs. RIP. And Mark ARMSTRONG d. 17.09.1906 aged 63yrs. RIP. The plaque at the bottom reads: Arthur Basil TANNER died of wounds in the Great War 20.09.1917 aged 21yrs. g.son of the above. RIP. And ANZAC.	A double bed which both has a surround in rendered masonry and a wrought iron surround around that. The up stand has a marble book of life and another marble plaque on the front face.	Good.
RAPP	Henry Frances Mary	31.01.1874 07.02.1874	29 14w			Gloria In Excelsis Deo. Beneath this stone sleeps the mortal remains of Henry RAPP Native of Geisenheim Germany who departed this life on the 31.01.1874 in the 29 th year. Tribute: 'Being greatly	The next is a half round top standing sand stone monument with a recessed face framing the words: This grave also has a footstone and possibly once a timber picket surround there are some remnants of timber frame.	Good.

Conservation Management Plan for Tambaroora Catholic Cemetery

						esteem for modesty of bearing and a virtuous life his death which occurred 1 yr and 24 days after his marriage has caused general regret may God through the late intercession of the immaculate virgin grant him eternal rest. Then followed by a faded small verse. Then by his side also the remains of his infant daughter Frances Mary RAPP who died on 08.02.1874 aged 14weeks.		
HALPIN	Timothy Catherine Mary	02.09.1873 06.03.1892	50 62			Sacred to the memory of Timothy HALPIN departed this life 02.09.1873 aged 50yrs. Verse: 'May he rest in Peace – Amen.' Also Catherine Mary HALPIN wife of the above who died on 06.03.1892 aged 62yrs. RIP. A footstone is unreadable.	A tall standing sand stone half round monument with carved funerary draped urn and alter cloth at the top set within a double bed with wrought iron railing with a footstone, sand stone monument. The fence surround has an interesting feature, a small gate with a padlock. So that people could have gone in and tended the graves and garden.	Fair, Leaning.
UNKNOWN							There is a small hand hewn cross with some twigs – no name.	
UNKNOWN							A collapsed timber picket grave site.	
UNKNOWN							A double bed surround in wrought iron and basically missing its memorial there is a tiny plaque reading In Affectionate and loving remembrance of my dear father.	This may well have dislodged through erosion, or headstone standing nearby. (below) Refer p. 7 of images.
UNKNOWN							A single headstone in sand stone eroded significantly from 'salt attack'. Sacred to the Memory of: difficult to read perhaps the first letters may be Cath....	Refer above.
UNKNOWN 1 & 2							Two excellent large wooden crosses primitive – no names.	Fair.
UNKNOWN							A single bed with broken away – child's bed with no name remaining. A stone at one end and a concrete surround.	Poor.

INVENTORY 2

Compilation of Known information on burials. Tambaroora Catholic Cemetery

NAME	FIRST NAME(s)	D. of D.	AGE	CEM.	NO.	INSCRIP.	AD. INFO
ACKERMANN	Anna Maria	01.06.1904	75				dob. 28.04.1828 b. Budenheim Mainz W Germany
ACKERMANN	Michael	06.08.1908	79	20			dob. 22.11.1828 b. Budenheim Mainz W Germany
AMIOT	William	11.04.1890	31	19			acc. Killed; with Eliz Hopman
ARMSTRONG	Annie	05.02.1930	84	18			nee Neill; w/Mark
ARMSTRONG	Mark	17.09.1906	63	19			h/Annie
BLUETT	Ann	16.07.1910	50	7			nee Macryannis Dau/Vacillus & Matilda Macryannis
BURNS	Patrick Richard	14.01.1991	13	51			
BURNS	Vera	13.03.1974	69	1			with Raymund Septimus
BURNS	Raymund Septimus	23.07.1976	74	2			with Vera
CULLEN	James	17.05.1870	60	35			bro/Richard
CULLEN	Richard	01.12.1859	46	35			bro/James
ELDRIDGE	Linda Anne	(1898)					dau/Edward & Rose O'Reilly; w/William; unmarked
GROSS	Rachael Mary	07.01.1877	11m	21			dau/Henry & Julia
GUDGEON	James Francis	06.04.1866	17m	53			son/John & Sarah J
HALPIN	Catherine Mary	06.03.1892	62	15			w/Timothy
HALPIN	Timothy	02.09.1873	50	14			h/Catherine Mary
HARVEY	Mary	08.06.1915	77	59			w/William F; mother
HARVEY	William F	20.01.1912	77	58			h/Mary; father
HOPMAN	Elizabeth	11.06.1907	68	19			mother; with William Amiot
HUGHES	Edward J	15.04.1906	62	45			h/Mary
HUGHES	Mary	30.05.1915	84	45			nee Maloney; w/Edward J
KEVORKIAN	Rose Ann	11.03.2004					dob. 05.03.1942
KIMM	Mary Ann	29.01.1923	32	10			nee Myers; w/William G
KIMM	Mavis Dorothy	10.06.1923	7	11			dau/William G & Mary Ann
KNIGHT	Margaret	26.08.1875	27	22			acc. Drowned Macquarie River
MACRYANNIS	Demetrius A	29.02.1920	50				son/Vacillus & Matilda
MACRYANNIS	George J P	19.11.1903	28				son/Vacillus & Matilda
MACRYANNIS	John T	25.01.1913	40				son/Vacillus & Matilda
MACRYANNIS	Matilda	01.10.1902	64	7			w/Vacillus; mother
MACRYANNIS	Nicholas	09.09.1903	35				son/Vacillus & Matilda
MACRYANNIS	Vacillus	12.07.1889	67 *37	7			h/Matilda; father
MAHER	John	14.02.1896	65	43			h/Helen; acc. killed
McEWEN	Bridget	13.06.1898	74	42			b. Co Caven (sic) Ireland; w/John; mother
McEWEN	John	17.06.1887	60	42			h/Bridget; father Farmer in Sofala Street Tambaroora ²
McEWEN	Mary	01.08.1891	32	42			dau/John & Bridget
MOLONEY	Alice	17.11.1863	62				
		*17.11.1865		38			w/Edward
MOLONEY	Edward	06.08.1873	62	38			h/Alice
MULLINS	John	16.10.1894	54	26			h/Mary; father
MULLINS	Mary	06.08.1926	84	26			w/John; mother
MULLINS	William James	14.08.1924	47	25			s/John & Mary; brother
NICHOLS	Rose Levenia	(no date on either prev. listings)					with Richard & James Cullen
NORTON	Francis M	08.06.1935	44	46			with Fredrick A
NORTON	Fredrick A	06.07.1926	67	47			with Francis M
NORTON	Joseph	02.11.1958	71	46			father
NORTON	Margaret	17.07.1876	42	41			b. Co Caven (sic) Ireland
O'REILLY	Edward	27.12.1929	67	28			h/Rosannah; father
O'REILLY	Joseph	16.12.1901	73	27			h/Mary
O'REILLY	Mary	13.02.1900	65	27			w/Joseph
O'REILLY	Patrick Joseph	08.09.1886	17	28			s/Joseph & Mary
O'REILLY	Rosannah	09.03.1934	67	28			w/Edward; mother

² Greville's Post Office Directory 1872.

Conservation Management Plan for Tambaroora Catholic Cemetery

OLLEVOU	Rudolph St Hilaire (Rudy)	06.09.1987	71	4	dob 05.11.1916	QX8094 Gnr 2/2 Anti Tank Rgt
PEDDER	James	30.05.1881	24	31		acc. killed
PHELAN	Christina	27.02.1921	62	42		dau/John & Bridget McEwen
RAPP	Frances Mary	08.02.1874	14 w	17		dau/Henry & Mary
RAPP	Henry	31.01.1874	28	16		b. Geisenheim Germany; h/Mary
REYNOLDS	Bridget	14.05.1873	53			b. 1820 Co Louth Ireland *nee English. *nee Englishby w/Charles; mot dau/Josiah & Catherine (Josiah: Miner in Mudgee Street) ³ nee Maloney; w/Josiah; mother
ROBERTS	Alice	(1865)				s/Josiah & Catherine
ROBERTS	Catherine	22.04.1912		37		h/Catherine; father
ROBERTS	Daniel	(no date)				s/Josiah & Catherine
ROBERTS	Josiah	16.11.1896	53	37		b. 1885. s/Josiah & Catherine
ROBERTS	Roy	(no date)				uncle/Frances Norton
ROBERTS	Sydney	(1886)	1			dau/John & Susan
ROBINSON	James	05.04.1933	81	39		acc. Drowned in Macquarie River
ROBINSON	Susan	26.10.1866	12	41		s/John & Rose; d. Hill End
SARGANT	George C J	23.09.1892	21	23		dob 15.08.1842, b Co Tyrone Ireland; nee
STEPHAN	Jacob James	20.02.1868	6m	36		Connolly; w/John; d. Hill End
STEPHAN	Rose	28.09.1867	23	36		d.o.w. in Great War; an Anzac
TANNER	Arthur Basil	20.09.1917	21	19		nee Robinson; w/Edward; mother
THOMPSON	Peter John	16.04.1955	3	6		b. Co Caven (sic) Ireland
TOOHEY	Susan	04.10.1915	86	40		s/Edward & Susan
TOOHEY	Susan	(duplicate issue)		41		marker
TOOHEY	Thomas	17.04.1918	54	40		s/James & Elizabeth nee Cullen
WADE	Harry	12.04.1948		5		b. (1860)
WILLARD	Harold J E	(1866)		34		
WILLARD	James Sydney	26.10.1908	77	33		
Noted also in ELGA						
EYLES	Vincent	02.06.1879		2		
Unknown				3		
Unknown				12		
Unknown				24		
Unknown				29		
Unknown				30		
Unknown				32		
Unknown				44		
Unknown				48		
Unknown				49		
Unknown				50		
Unknown				52		
Unknown				54		
Unknown				55		
Unknown				56		
Unknown				57		

(73) - Those in bold type/text were sighted by B. Hickson on 13th December 2007.

Reference:

- Evans Local Government Area – Cemetery Register (North), 2003.
- (1998) Headstones sighted by Information Services 16th February 1998.
- SHI NO: 1080763 “Tambaroora Catholic Cemetery” (2005).
- Hill End Cemetery Conservation Area (1986).
- F/N 76 Bathurst Heritage Review (2005).
- B Hickson site visit 13th December 2007.

³ Greville’s Post Office Directory 1872.

PHOTOGRAPHIC IMAGES INDEX

(recorded by B. Hickson on 13th December 2007).

TAMBAROORA CATHOLIC CEMETERY

Surname	Page Location
---------	---------------

ACKERMAN	3
ARMSTRONG	10
BURNS	7
CULLEN	6
GROSS	5
GUDGEON	7, 8
HALPIN	9
HARVEY	6
HOPMAN	9
HUGHES	7
KIMM	3
KNIGHT	9
MACRYANNIS	2
MAHER	2
Mc EWAN	1
MALONEY	8
NORTON	4
O'REILLY	5
PEDDAR	6
PHELAN	1
RAPP	10
ROBERTS	8
ROBINSON	1, 4
SARGANT	9
STEPHAN	8
THOMPSON	4
TOOHEY	2
WADE	4
WILLARD	6

UNKNOWN	2
Wooden Cross	

UNKNOWN	5,7
---------	-----

Conservation Management Plan for Tambaroora Catholic Cemetery



7. Tambaroora Catholic Cemetery
Headstone: McEwan, Phelan, Robinson
Norton, Toohy, by B Hickson 13/12/2007



8. Tambaroora Catholic Cemetery
Headstone: REYNOLDS Bridget (nee
ENGLISHBY), photo by B Hickson 13/12/2007



9. Tambaroora Catholic Cemetery
Headstone: Entrance Gate
site visit/photo by B Hickson 13/12/2007



10. Tambaroora Catholic Cemetery
Headstone: General View
site visit/photo by B Hickson 13/12/2007

Conservation Management Plan for Tambaroora Catholic Cemetery



Tambaroora Catholic Cemetery
 Headstone: MACRYANNIS
 site visit/photo by B Hickson 13/12/2007



Tambaroora Catholic Cemetery
 Headstone: TOOHEY Susan & Thomas
 site visit/photo by B Hickson 13/12/2007



Conservation Management Plan for Tambaroora Catholic Cemetery





Conservation Management Plan for Tambaroora Catholic Cemetery





24. Tambaroora Catholic Cemetery
Headstone: PEDDAR James
site visit/photo by B Hickson 13/12/2007



25. Tambaroora Catholic Cemetery
Headstone: WILLARD James Sydney
site visit/photo by B Hickson 13/12/2007



23. Tambaroora Catholic Cemetery
Headstone: HARVEY William & Mary
site visit/photo by B Hickson 13/12/2007



26. Tambaroora Catholic Cemetery
Headstone: CULLEN, NICHOLS, WILLARD
photo by B Hickson 13/12/2007



Conservation Management Plan for Tambaroora Catholic Cemetery



Conservation Management Plan for Tambaroora Catholic Cemetery



17. Tambaroora Catholic Cemetery
Headstone:HOPMAN E.& AMIOT W
site visit/photo by B Hickson 13/12/200



14. Tambaroora Catholic Cemetery
Headstone:HALPIN Timothy & Catherine
site visit/photo by B Hickson 13/12/200



Tambaroora Catholic Cemetery
Headstones-SARGANT C.J.
site visit/photo by B Hickson 13/12/2007



19. Tambaroora Catholic Cemetery
Headstone:KNIGHT Margaret
site visit/photo by B Hickson 13/12/2007

Tambaroora Catholic Cemetery
Images Page 9

Conservation Management Plan for Tambaroora Catholic Cemetery

Tambaroora Catholic Cemetery Images Page 10



