



*Conservation Management
For Sunny Corner Cemetery*

CONTENTS

INTRODUCTION	3
What is a Conservation Management Plan	3
The Process	3
SUNNY CORNER CEMETERY	4
Date	4
Location and property description	4
Method	4
Authors.....	4
Definitions.....	4
SUMMARY & RECOMMENDATIONS	5
Summary:.....	5
Recommendations:.....	5
PART A - INVESTIGATE SIGNIFICANCE	7
Physical Description	7
Plan	7
Setting and curtilage	10
Fencing and gates.....	10
Layout and special features.....	10
Monuments and grave sites.....	11
Monumental masonry	11
Inventory sheets	12
Biodiversity: Plantings and fauna	13
Other Features	14
Documentary evidence.....	14
Summary of physical description.....	15
History.....	17
Land history	21
Management history.....	21
Listings.....	21
Historic Themes	22
Make Comparisons	23
Summary of history.....	23
ASSESS SIGNIFICANCE.....	24
Criteria	24
Statement of Significance	25
Level Of Significance	25
State Heritage Inventory (SHI form)	25
Community feedback.....	25
INVENTORY 1	26
INVENTORY 2	30
Headstones Unmarked but recorded by Vicki Powys 1991.....	33
HEADSTONES – UNMARKED	33
PROBABLE BURIALS	33
PHOTOGRAPHIC IMAGES INDEX.....	34

INTRODUCTION

What is a Conservation Management Plan

An important tool in caring for a heritage item can be a conservation management plan (CMP). This document provides a guide for future care and use, including any new development. Dr James Kerr describes a CMP as "...a document which sets out what is significant in a place and, consequently, what policies are appropriate to enable that significance to be retained in its future use and development. For most places it deals with the management of change" (Kerr, *The Conservation Plan*, National Trust NSW, Sydney 2000: 1).

The Process

1 INVESTIGATE SIGNIFICANCE

- Investigate the physical evidence remaining
- Investigate the history of the cemetery
- Check on listings
- Decide upon relevant Local and State historical themes
- Make comparisons with other cemeteries
- Summarise what you know about the item

2 ASSESS SIGNIFICANCE

- Assess significance using the NSW heritage assessment criteria
- Prepare a succinct statement of heritage significance
- Determine level of significance
- Write up all your information including SHI form
- Get feedback from your community
- Complete your significance assessment

3 MANAGEMENT of SIGNIFICANCE

- Consider the management implications of the cemetery and its level of significance
- Analyse the constraints and opportunities
 - existing conditions
 - owner & descendant requirements
 - statutory and zoning requirements
 - other constraints
- Prepare conservation recommendations and management policies covering
 - monuments
 - maintenance
 - interpretation
 - urgent works
- Get feedback from the community
- Recommend a process for carrying out the conservation management recommendations

SUNNY CORNER CEMETERY

Date

15th January 2008.

Location and property description

Lot 7009 DP1025720 Dark Corner Road Sunny Corner, Parish Castleton, County, Roxburgh.

Method

The method used in this study is based on the Australia ICOMOS 1988 Charter for the Conservation of Cultural Significance (The Burra Charter); Conservation Management Guidelines and Heritage Assessment by the NSW Heritage Office and Department of Planning 1996; NSW Heritage Manual and James Semple Kerr's 'The Conservation Management Plan' printed by the National Trust of Australia, NSW.

Authors

Barbara Hickson Architect and Heritage Adviser using the Bathurst Regional Cemetery CMP Proforma.

All recent images, unless otherwise stated, are by Barbara Hickson.

Definitions

See appendices: The Burra Charter.

SUMMARY & RECOMMENDATIONS

Summary:

This is a small cemetery representing the former copper and gold mining community of Sunny Corner, established in 1870. It retains social significance to the small community and also to the former population of miners, many of who were Cornish, and whose lives were affected by the inherent dangers of late 19th century mining practices.

The cemetery contains a good range of high quality grave stones representing a number of monumental mason craftsman and is located in a tranquil setting of woodland with better than average flora and fauna biodiversity structure.

Recommendations:

1. That Bathurst Regional Council adopt this CMP.

2. Develop a site management plan.

Include implementation of the study Recommendations from Part 8 of the Bathurst Regional Heritage Study, 2007, and the site specific recommendations developed as part of this CMP as follows:

- **Repairs to monuments:** Draw up a schedule of conservation work, highlighting the most urgent works. Refer to the Inventory 1 of memorials contained in this document, and to the 'condition' column for specific works.
- **Site Works:** In the vicinity of memorials, remove or cut back large trees that are adversely affecting these grave sites. Clear a pathway between religious groups for safe walking.
- **Fencing:** Check over, repair and then maintain existing fencing to exclude stock as required. Generally, repair the swing of the main gate, and add the missing pedestrian gate or close over with fencing.
- **Interpretation:** Consider interpretation information including:
 1. A sign at the cemetery gate listing known burials up to approximately 50 years ago, and a brief history.
 2. Consider making available interpretation materials in printed form or information on Council's website.
 3. A seat or place of rest, near the gate sign.
- **Maintenance:** Draw up a program of maintenance. Adopt appropriate weed control measures. No firewood collection and no slashing. Where 'weeds' are presently shading and possibly protecting a headstone care must be taken during its removal. Pruning is preferred rather than weeding, where possible. Where existing maintenance of monuments in the Anglican area is occurring, encourage the continuance of this maintenance.
- **Documentation:** Document all new works and conservation works.

Conservation Management Plan for Sunny Corner Cemetery

- **Staff resource:** Encourage Council to allocate a special officer who has an interest in the preservation of cemeteries, whose role should be to oversee the care and maintenance of rural cemeteries while encouraging local community groups and/or descendants to assist.
- **Biodiversity:** Assess biodiversity by documenting flora and fauna in the cemetery and adjacent areas in the format contained in this CMP document.

3. Re-Zoning:

The rural cemeteries in Bathurst Region are zoned 1(e) Outer Rural. Therefore rural uses of the cemeteries are permissible under the Bathurst Regional (Interim) LEP 2005, providing they will not have a detrimental effect on the cemetery.

It is recommended that the zones of the cemeteries be zoned as *SPI - Special Activities*, under the future Comprehensive LEP. This would ensure that the zone will assist in the conservation of these cemeteries by restricting the potential development on that land.

4. Listing:

Sunny Corner Cemetery should be listed as a heritage item in the 2009 Comprehensive LEP.

5. Community Consultation:

Local members of the Sunny Corner or Dark Corner community, and/or descendants of those buried at Sunny Corner, should be encouraged to comment on, or add to, this CMP.



Figure 1: View within the Sunny Corner Cemetery.

PART A - INVESTIGATE SIGNIFICANCE

Physical Description

The area containing the cemetery is oblong in shape, with the Dark Corner Road located on an angle, on the eastern boundary. The total area of the cemetery is approximately 20 acres, (8 hectares), including a tract of reserved land around it.

The bushland surrounding and throughout the cemetery obscures it from the passing road. Only a small sign on the road indicates its presence.

Plan

The sketch below by Barbara Hickson illustrates the general layout of cemetery and graves.

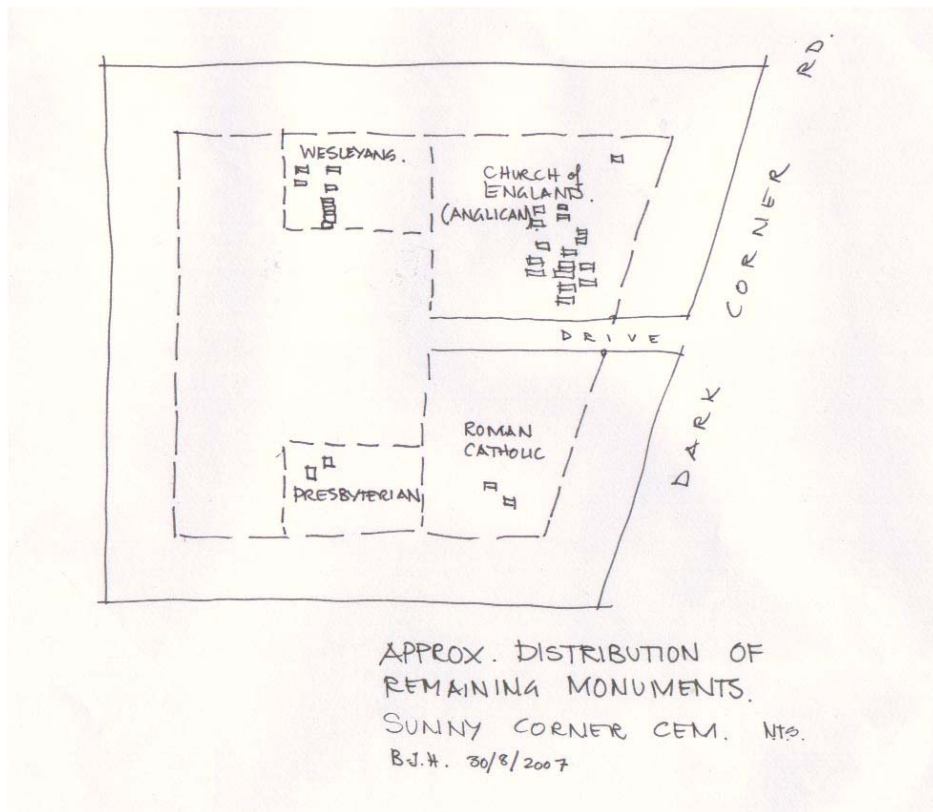


Figure 2: The general layout of the Sunny Corner Cemetery. (Barbara Hickson).

Conservation Management Plan for Sunny Corner Cemetery

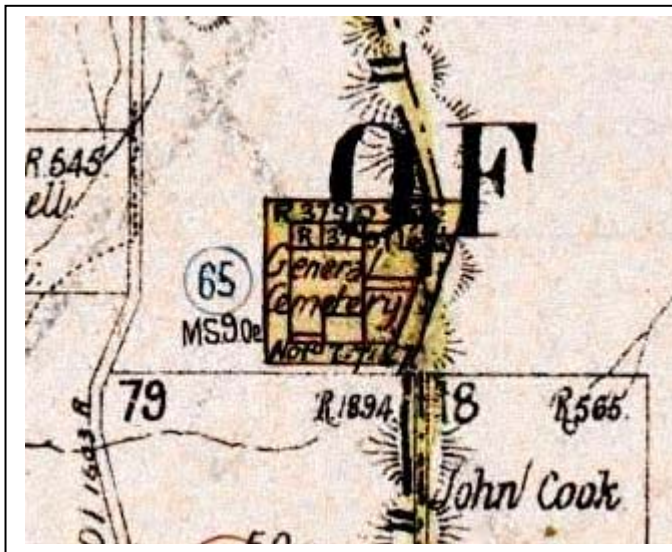


Figure 3: Part of the 1890 Parish Map illustrating the cemetery, notified on 2nd July 1887.

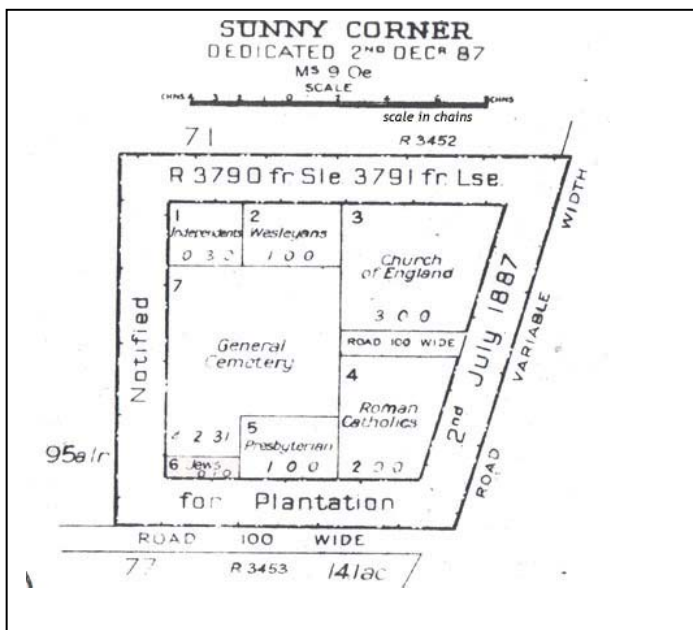


Figure 4: A Plan from the Bathurst Regional Council files. The plan indicates the religious denominations within the cemetery. It is difficult to be precise; however the greatest number of burials still with visible memorials are located in the Church of England, (Anglican), section. The second largest group appears to be in the Wesleyan section. There are a few visible memorials within the Roman Catholic and Presbyterian sections.



Figure 5: The above aerial image was provided by Bathurst Regional Council. The cemetery is located in the square of bushland at the centre of the image.

Setting and curtilage

The land is located on the western side of the Dark Corner Road. The cemetery runs parallel to the road. The inner cemetery section is approximately 50 metres from the road. There is a small sign indicating the driveway to the cemetery, on the Dark Corner Road. This access point is approximately 3.1 km from the junction of Palmers Street, (which turns into Dark Corner Road), and Bathurst Street, within the village of Sunny Corner.

The surrounding land, to the cemetery is open grazing land. The cemetery block itself contains dense bushland which does not allow for an outlook out from the cemetery. The reserve approximately 20 metres round the central cemetery block, is also densely covered in bushland growth. The cemetery cannot be seen from the passing road.

The cemetery land varies from gently undulating to sloping. It is difficult to walk between the various religious sections due to the denseness of the bushland and the roughness of the ground.

Fencing and gates

The gate posts are large timbers in the round with metal caps and the fence is generally standard ring lock wire fencing with two strands of barbed wire at the top, and then ring lock mesh below. There was obviously once a pedestrian gate, (now missing). The gate is open and has been for sometime. A gate be reinstated to a swinging standard.

Layout and special features

As mentioned above, the cemetery contains dense bushland, (refer to the aerial photo from Bathurst Regional Council). The ground in the cemetery is rough due to many holes from animal diggings or previous grave plots in collapsed state, and many trees have fallen or are falling.

The cemetery is divided into religious denominations, at least originally. It may be possible that not all graves are located within their corresponding denomination. From the site survey, the occupied religious sections include:

- Church of England, (Anglican), at the front, right hand side of the entry, to north-eastern corner. This section contains the majority of headstones and is generally well cared for.
- Roman Catholic, front left hand side of the entry, to south-western corner. This section contains indications and remains of burial sites.
- Presbyterian, in the centre, south side. This section contains one legible memorial and remains of other burial sites.
- Wesleyan, in the centre, north side. This contains a number of legible memorials and remains of other burial sites.

Monuments and grave sites

Generally, the headstones are located amongst the many small bushes and large trees.

The number of standing headstones is quite small. Many have fallen or are broken. The total number of standing legible, or nearly legible, headstones is 16, representing 45 persons. However records indicate that about 160 persons are buried at this cemetery.

The Anglican section of the cemetery has been maintained, ensuring that undergrowth is kept at abeyance. This section is better maintained than the other sections. There are a number of small metal plaques that have been added to the section in recent years.

Monumental masonry

As noted above, most of the legible graves and headstones are in the Anglican section of the cemetery. The grave stones generally face east, which is the standard for graves in Australia. In this case it is also the entrance direction into the cemetery. Most grave stones are marble, with some polished granite and cast iron as well.



Figure 6: The gable shaped cast iron stele within the cemetery.

The Presbyterian section only contains one marked grave, that of the two children of the Bryant family.

The Wesleyan section has seven monuments which are in very poor condition. Many of the inscriptions are becoming illegible, some have fallen and one is completely obscured by a dense holly bush growing in front of it.

Two rare headstones in the cemetery are now illegible. These headstones are gable shaped cast iron stele set on legs in the Anglican section, (Figure 6 above), which was probably imported from Scotland, and an even rarer semicircular steel stele in the Wesleyan section.

Most of the wrought iron fences around the beds, (approximately 12), appear to be made by the same manufacturer. Simple fleur-de-lis spears, alternating with semicircles of iron bars, or the same motive alternating in heights, are the typical patterns used for the wrought iron fences.

Conservation Management Plan for Sunny Corner Cemetery

The work of J. Burns of Bathurst, Andrews of Rookwood, Taylor and Sons Sydney and railing by J. Slack of Bathurst are represented at this cemetery.

Inventory sheets

Inventory 1: A description of most of the grave plots or headstones is included at the back of this CMP. Reference should be made to these descriptions for more detail and for a condition assessment.

Inventory 2: An Inventory of all known burials is also included in the attachments.



Figure 7: Graves from left to right: Henry, Brown, Odgers and Odgers.



Figure 8:

Sketch of the monuments belonging to Roy Williams, right hand side, and Gertrude Williams, buried as Wolla Meranda and named on the headstone of de Sanary..

(P29: K Karlsen, Gert, A Lady Ahead of her Time (1988?).

The above headstones were not located on the site visit on 29th August 2007.

Biodiversity: Plantings and fauna

The cemetery, as noted above, is an area of bushland or open forest. A survey of the site in September 2003 by staff from former Evans Shire Council recorded the following information about the plants in the Sunny Corner cemetery:

Structural formation class: Open forest, no understorey.

Dominant Eucalypt Species: Scribbly gum, (Eucalytus Rossii) pine, brown barrel, yellow box, (Eucalyptus melliodora).

Ground covers: Everlastings, Native geranium, Matt rush, Mauve daisy, Hardenbergia, Native plantain, Indigofera, Heath, Bush pea, Yam daisy, Native verbena, Acacia Biddy bush, Tussock Poa, Kangaroo grass.

Weeds: Blackberry, Ivy, Broom, Holly.

General health or condition of remnant forest: Undisturbed, mature trees with Tussock Poa dominance, (Native grass).

Management Issues: Tree felling, weeds.

Overall Conservation Asset description: Grassland community may be significant, possible seed source, check for later flowering.

The recommendations for future biodiversity management include:

Weed control is required and firewood collection and slashing should not be permitted. However where 'weeds' are presently shading and possibly protecting headstones care must be taken up on its removal, if required. Pruning rather than weeding if preferred where possible.

The Biodiversity Conservation in the Sheep-Wheat Belt of NSW June 2007 survey, was by the Department of Environment and Climate Change, (DECC), carried out to assess the status and extent of endangered ecological communities and threatened birds and other fauna across the NSW sheep-wheat belt did not include this cemetery. The survey provides a Habitat Complexity Score and notes that:

'A greater habitat diversity = higher score = more fauna species'

The four cemeteries within in the Local Government Area included in the survey were: Rockley, Peel, Sofala and Trunkey Creek General Cemeteries. Observation of this cemetery at the present time, in comparison to those above, and considering the vegetation recorded in the Evans survey indicates that this cemetery would have potentially scored a higher than average score in Habitat Complexity, e.g. in excess of the 5 scored by the above mentioned cemeteries.

In other words this cemetery may present a woodland with better than average biodiversity structure, although no under storey shrubs are recorded, but good ground habitat features, such as logs or boulders, exist. The cemetery should be treated with consideration as a possible high scoring habitat and hence a possible refuge for fauna species.

Conservation Management Plan for Sunny Corner Cemetery

A site visit at a different time of year, e.g. in the spring, may help identify bulbs and spring flowering plants that will not be evident for the rest of the year.

No fauna were recorded within the cemetery or within the vicinity at the time of the author's site visit.

No fauna were noted on the Evans Shire Council survey. In order to further assess the biodiversity of the area it is recommended for future management that:

On future site visits any fauna observed should be recorded in the following table form and added to this CMP:

Table 1: How to record observed fauna.

Fauna Record			
Xx minute period	Type observed	Number observed	Suggested by indirect observation
Birds			
Mammals			
Reptiles			

Other Features

No other features of note were recorded.

Documentary evidence

Present records indicate 162 burials or memorials in this cemetery representing approximately 100 family surnames. Mistakes in spelling make it impossible to be exact. There are a number of references to these burial lists which include:

1. Evans Local Government Area – Cemetery Register, (South), 2003.
2. Australian Cemeteries Index: <http://cemindex.arkangles.com> listing dated 21st June 2007
3. Site visit 29th September 2007 by B.J. Hickson.

A survey by Evans Shire Council in September 2003 recorded the plants listed in the section above and some black and white photographs from this survey are on Bathurst Regional Council files.

Ms Vicky Powys carried out a survey of the burials at the cemetery in 1991. A part copy of this survey is on the former Evans Shire Council files. Refer to History section in this CMP for an abridged version of Ms Powys' report.

The Evans Shire Council files contain some additional information such as: letters regarding the condition of the cemetery, (18th August 1994: C.O.Wilkinson), no other cemetery in the district is in such a deplorable condition'.

Bathurst Regional Council provided a map and aerial image which are in this CMP.

Summary of physical description

- This is a small cemetery located on the western side of Dark Corner Road. The surrounding setting of the cemetery is in open rural landscape, grazing land, and the cemetery block is bushland.
- The bushland within the cemetery is open forest type with good ground cover and may present a woodland with better than average flora and fauna biodiversity structure compared to other rural cemeteries within the Bathurst Region. The grassland community may also be significant.
- The cemetery is in fair condition in so far as the main burial section, the Anglican section, which appears to be well cared for and maintained.
- There are a number of monuments, especially in the Wesleyan sections that require attention.
- The total number of standing legible or nearly legible headstones is 16, representing 45 persons.
- The monuments generally face east and include a range of types and materials. Most are marble, although there are some of polished granite. There are also two rare metal steles which no longer have any inscription.
- The work of stonemasons J. Burns of Bathurst, Andrews of Rookwood, Taylor and Sons Sydney and railing by J. Slack of Bathurst are represented here.
- The cemetery appears to be no longer in use.



Figure 9:
Historic image of Gertrude Williams on her first wedding day.
Source: (K Karlsen, Gert, A Lady Ahead of her Time (1988?)).

Conservation Management Plan for Sunny Corner Cemetery

Box:EVAN /Doc:DP 1025720 P /Rev:16-Mar-2001 /Sts:SC.OK /Prt:15-Jul-2004 14:48 /Pgs:ALL /Seq:1 of 1
WARNING : Electronic Document Supplied by LPI NSW for Your Internal Use Only.

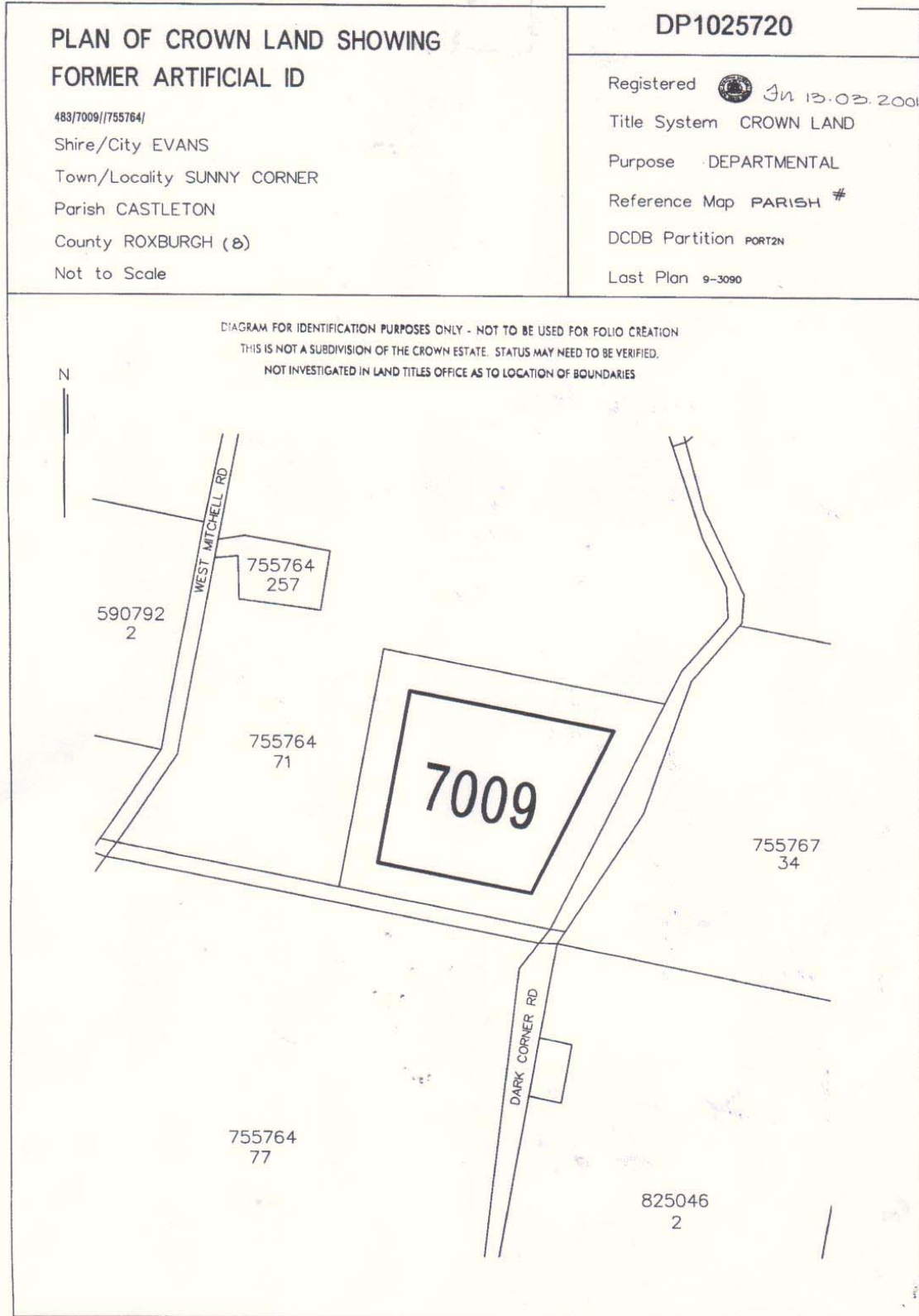


Figure 10: Deposited Plan of the Sunny Corner Cemetery.

History

In Brief: (Taken from Bathurst Regional council's State Heritage Inventory database).

The Sunny Corner cemetery opened in 1870 and was dedicated in 1887. Registered burials also occurred from 1887. The village of Sunny Corner grew rapidly in the 1880s, but the village was not close to the cemetery. The residents of Sunny Corner had a selection of 3 cemeteries to choose from for interments, which included Meadow Flat, Kirkconnell and Dark Corner Cemeteries. The first registrar was Mr L.A. Tompkinson who was also the Postmaster.

Silver mining and copper mining were the main activities in the vicinity of Sunny Corner from the 1880s and significant quantities of gold, lead, zinc and antimony were mined there. This mining activity would have been a factor in the cause of death of the miners. The township may have reached 4,000 people around 1890 declining after that. Today only a very small population remains within the village.

Sunny Corner was the home of Gertrude Poyitt, (1867-1950), an internationally acclaimed author who published several novels.

The following history is abridged from a record made of Sunny Corner Cemetery by Vicki Powys, dated October 1991.

Few records of burials now remain. The original cemetery records have been destroyed or lost, and only a few headstones at Sunny Corner Cemetery mark the spot of where at least 200 people are buried.

Registration of deaths was compulsory in NSW after 1856, however there was no Registrar at Sunny Corner until 1887, so any local births, deaths or marriages before that date may have been registered at any one of a number of larger towns. Therefore, local records are not easy to track down prior to 1887.

During the gold rush period in the area of the 1850s to 1870s, Meadow Flat Cemetery was the first cemetery to open within the vicinity for residents at Mitchell's Creek, now known as West Mitchell. The exact date of this cemetery opening is unclear. However, it is likely to have opened around 1858. A school opened at Meadow Flat in 1856, and a church and a post office in 1857, so it is likely that the cemetery would have been established along with the village (also presently known as Meadow Flat in those days). The earliest headstone at Meadow Flat is dated 1859.

By 1863/4 the Kirkconnell Cemetery had opened, with the cemetery at Dark Corner opened by 1870. This gave local people a choice of three cemeteries, but none of these were convenient to Sunny Corner township, which had grown rapidly in the 1880's. Finally Sunny Corner had its own cemetery by 1887, although some Sunny Corner families continued to use Meadow Flat Cemetery where all the family members would be

Conservation Management Plan for Sunny Corner Cemetery

buried together. If families were staunch Catholics, they would be buried at Kirkconnell, even though the other cemeteries had Catholic portions.

The local Sunny Corner Registrar was Mr L.A. Tompkinson who was also the local Postmaster. The first entry in the Sunny Corner Registries is dated 12th July 1887. Mr Tompkinson registered the death of his own son, (in 1891), and the local undertaker, (Mr Simpkins), lost a young son in 1899.

About half of all the deaths registered for the cemetery, were of infants, who died from various causes ranging from teething to accidental drowning and gastroenteritis being a common cause of death.

For deaths of adult males there is no conclusive evidence, although nearly all of the town's men worked at the mine. Symptoms of heavy metal poisoning may have merged with symptoms of other illnesses and went unrecognized. Causes of death for men ranged from phthisis, (lung disease possibly caused by inhalation of silica dust in mines), pneumonia, typhoid fever, consumption, and several mining accidents.

Mistakes in spelling are common in early records and the Sunny Corner Registers are no exception. Below is a summary of the history of this cemetery.

Cemetery dedicated: 1887
Oldest surviving headstone: 1891
Earliest burial record: 18th November 1889
Last burial record: 1950
Total number of known burials: 1401 (total may be approximately 200).
Total number of headstones: 25 (includes names of 34 buried persons)
Fenced plots or slabs, now anonymous: 14
Persons who died at Sunny Corner prior to 1889 were buried at Dark Corner, Meadow Flat or Kirkconnell cemeteries.

Note: Since Powys' report some works have been carried out on this cemetery including fencing and clearing.

It is also noted that the total number of headstone identified in Powys' report (1991), was higher than that identified during the site visit by B.J. Hickson on 29th September 2007. The number of headstones has decreased by nine. However, the number of persons represented by the 16 headstones identified by B.J. Hickson was 45, this is an increase of 11 persons.

Therefore, it is likely that headstones have been removed, destroyed by fire, vandalized or lost in some other way. Due to the increase of the number of people interred at this cemetery, this may be a result of alterations to existing headstones to include more people or the implementation of new headstones. Alternatively, it may be possible that Powys did not identify all headstones, e.g. dense vegetation obscuring monuments.

¹ Our current count is 162 although some names are memorials only and not burials.

Historic Pictures from Picture Australia:

Figure 11: *The Post office at Sunny Corner, 1901. (Image from New South Wales Post Offices photo album).*



The local Postmaster was Mr L.A. Tompkinson. He was also the registrar of the cemetery from 12th July 1887. The register includes Victor Alexander Garnet Gale Tompkinson, Mr Tompkinson's own son whom he registered on 25th November 1891.

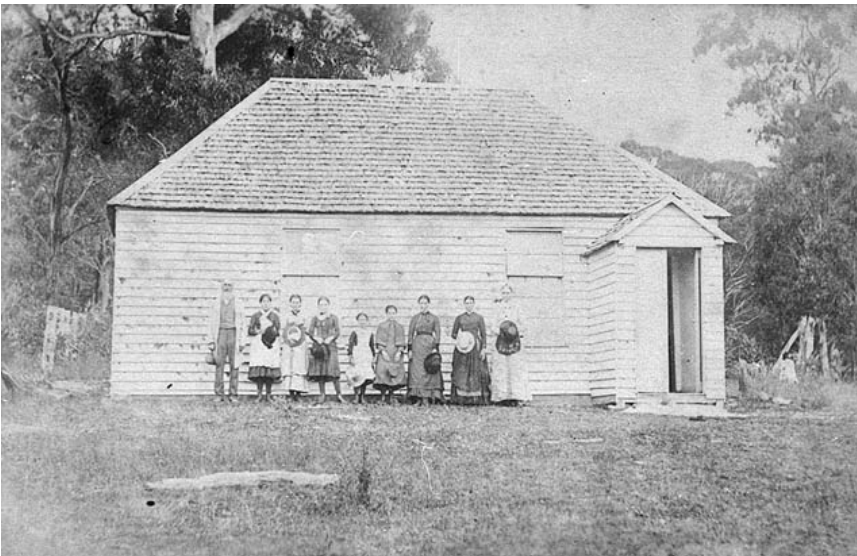


Figure 12: *The girl second from right is mother of Mrs Elivie Monk, Sunny Corner, standing outside what appears to be a timber framed and clad church, n.d. (Image from 'At work and play').*

The following Thematic History has been abridged from the
Bathurst Regional Heritage Study 2007, the author is Dr. Rob McLachlan.

Copper mining was under way near Rockley by the late 1840s, before the gold rush, and later at Sunny Corner from the 1880s, after the gold rush.

Other important reef mining localities, between the 1860s and the early 1900s, include: Mitchells Creek, (Sunny Corner), and nearby Dark Corner, Gilmandyke, (south of Rockley), Napoleon Reef (Walang), Clear Creek (Peel), Caloola and Wiagdon as well as various sites along the Turon River valley, (including Sofala and Turondale).

Sunny Corner also belongs to the second wave of the area's copper mining enterprises, although to be more accurate, Sunny Corner was regarded primarily as a silver mining operation. The ore bodies at Sunny Corner, together with Dark Corner, produced, as well as silver and copper, significant quantities of gold, lead, zinc and antimony.

From the late 1850s, the Sunny Corner area was worked for its gold, (as Mitchells Creek), with silver attracting attention in the early 1880s and leading to the working of several silver mines. Some copper was being mined by the mid 1870s, but it was silver that attracted interest and finance. A number of mining companies worked in the area, the main one being the Sunny Corner Silver Mining Company, formed in 1884. The Silver King Mine, (closed 1887), operated nearby: Other, smaller, mines worked in the Dark Corner area.

The Sunny Corner Silver Mining Company, drawing on American smelter technology, operated with financial success until the collapse of the price of silver in 1892. After 1892, the localities mines and smelters worked only periodically. The Sunny Corner Company completely shut down in 1896, and its mine, and others in the area, continued to be operated intermittently by a succession of speculators until 1922. This post 1896 interest in the ore bodies of Sunny Corner and Dark Corner saw new equipment installed, remnants of which remain. Since 1922, the area has seen some exploratory work and, according to Cremin, (see reference below), the mine continued to be worked for zinc until the 1950s.

The Sunny Corner site once included a township, with perhaps up to 4,000 people at the height of the mining operation around 1890. After 1900, the town declined and many of its buildings were dismantled and re-erected in Portland. Extensive relics, however, remain in the immediate vicinity of the Sunny Corner Mine, including buildings used as offices and equipment housing. The engine house built of squared blocks of cast slag is possibly unique to New South Wales. The most spectacular relics are perhaps the brick smelter flues running up the hill to the brick chimney, dating from the early 1890s, built to remove toxic fumes. The failure to do so is still evident in the surrounding sterile landscape.

Sunny Corner, with its American smelter, was for a time one of the more successful 19th century silver and copper mining operations in the state and provides today a valuable resource for understanding late 19th century mining and ore refining methods.

More detailed information can be found in Volume 1 of the Evans Shire Council Heritage Study (1987). See in particular the entry by Ian Jack, 'Theme 5: Sunny Corner and Dark Corner', which is based on a survey of both primary sources and field study. Useful references will also be found in the Studies 'Industrial Archaeology Survey' by Aedeen Cremin. The reader is also advised to consult the Studies 'Industrial Archaeology Inventory' sheets, which contain additional information on mining sites, including photographs. See also V Powys, Sunny Corner, A Silver Town of the 1880s (1989). Gertrude Poyitt (1867-1950) published several novels, (in both French and English), under the name of Wolla Meranda in the 1920-30s, some of which drew on Sunny Corner where she was born and lived much of her life. She is buried in the Sunny Corner cemetery under the name of WILLIAMS, Gertrude Nicol in 1950. (K Karlsen, Gert A Lady Ahead of her Time (1988)).

Today the village of Sunny Corner today is more an area of hobby farm localities than a discrete village.

Land history

The Sunny corner Cemetery was surveyed circa 1870, notified on 2nd July 1887.

Management history

Initially the cemetery would have been managed by Trustees of the various denominations. From about 1967 Sunny Corner Cemetery was managed by Evans Shire Council until amalgamation with Bathurst City Council in 2005 and is now managed by Bathurst Regional Council.

Listings

This cemetery is not listed in any way at the present time. In the recent Bathurst Regional Heritage Study this cemetery was missed out and should be recorded in a SHI format and should be recommended for local listing.

Historic Themes

The following table includes NSW heritage themes relevant to this cemetery. For a more complete list of themes refer to the 'NSW Historical Themes' on the NSW Heritage Branch, Department of Planning website.

Table 2: NSW Heritage Themes relevant to the Sunny Corner Cemetery.

Australian Theme	NSW Theme		Notes	Examples
2 Peopling Australia	Ethnic influences	Cornish	Activities associated with common cultural traditions and peoples of shared descent, and with exchanges between such traditions and peoples.	Cornish migrants were prevalent in the silver and copper mining communities.
3 Developing local, regional and national economies	Health	Mining	Activities associated with preparing and providing medical assistance and/or promoting or maintaining the well being of humans.	Cemetery associated with the dangers of mining, especially copper mining. The number of infant deaths would be remarkable today. Over 50 recorded for the 10 year period from 1890.
4 Building settlements, towns and cities	Towns, suburbs and villages	Village	Activities associated with creating, planning and managing urban functions, landscapes and lifestyles in towns, suburbs and villages.	Former village of Sunny Corner.
4 Building settlements, towns and cities	Land tenure	Cemetery	Activities and processes for identifying forms of ownership and occupancy of land.	Cemetery land allocation in parish map.
8 Developing Australia's cultural life	Creative endeavour	Author	Activities associated with the production and performance of architectural, artistic and other imaginative, interpretive or inventive works.	Last resting place of Wolla Meranda published author of significance. The work of stonemason J. Burns of Bathurst.
8 Developing Australia's cultural life	Religion	Division of denomination	Activities associated with particular systems of faith and worship.	Four denominations are represented here: Wesleyan, Presbyterian, Roman Catholic and Anglican.
9 Marking the phases of life	Birth and Death	Local themes	Activities associated with the initial stages of human life and the bearing of children, and with the final stages of human life and disposal of the dead.	A cemetery with only a few monuments but which represent a very good range of types including marble, granite and steel.

Make Comparisons

Sunny corner is a small cemetery that marked the existence of a silver/copper mining boom at the end of the 1800s.

There are many other small cemeteries that are similar, however those associated with past mining activities are probably the most similar. As noted in history section, other important reef mining localities, between the 1860s and the early 1900s, include; Mitchell's Creek and nearby Dark Corner, Gilmandyke, (south of Rockley), Napoleon Reef, (Walang), Clear Creek, (Peel), Caloola and Wiagdon as well as various sites along the Turon River valley which were important for gold mining.

Of these locations, the closest in location and type of community are Dark Corner and Mitchell's Creek. The Dark Corner cemetery is located on Capertee Road and is within the Local Government Area of Lithgow City Council. It is listed as a heritage item locally on the Lithgow LEP.

The statement of significance for Dark Corner Cemetery is described as: *'The cemetery of a small mining and rural community is a significant record of life as well as death. Dark Corner is a poorly documented area of small mining as well as company mining and the cemetery is part of that documentation. Social: In all small communities, the cemetery has a lasting social significance. At Dark Corner the high quality of the stone grave markers is part of this social statement.'*

The description of the cemetery reads: *'The 2 hectare site is enclosed by post and wire fencing, with a wooden picket gateway and iron gates in the centre of the E boundary on Dark Corner Road. A central driveway running E-W divides the Catholic and non-denominational sections (on the S) from the Wesleyan, Presbyterian and Anglican sections (on the N). The earliest stele, to two women who died on the same day in 1872, are handsome pedimented sandstone. The monuments are of a high quality in an attractive rural setting.'*

There are clear parallels between this cemetery in size and description, with Sunny Corner Cemetery.

Summary of history

Sunny Corner cemetery was established to meet the needs of a local mining community whose activities centred on the mining of copper and silver. There was a considerable Cornish representation within the village. The mining peaked in the 1880s and 1890s and the village reached a population of approximately 4,000. After 1900 the village and mining declined. Today only very small rural settlement remains and the cemetery is no longer in use.

ASSESS SIGNIFICANCE

Criteria

Following the Heritage Branch guidelines, a statement of significance is developed by working through the following assessment criteria. (adopted from the Heritage Office CMP guideline):

Criterion (a) - Historical Significance - *an item or place is important in the course, or pattern, of NSW's cultural or natural history, or the cultural or natural history of the local area.*

The cemetery was established around 1870 and registered in 1887 to serve the local Sunny Corner mining community. The mining peaked in the 1880s and 90s and the village reached a population of approximately 4,000. After 1900 the village and mining declined. Today only very small rural settlement remains and the cemetery is no longer in use.

Criterion (b) – Social Significance - *an item or place has strong or special association with the life or works of a person, or group of persons, of importance in NSW's cultural or natural history, or the cultural or natural history of the local area. This might include a local family of note, pioneers, or soldiers.*

As with all cemeteries, this cemetery has lasting social significance. The activities of Sunny Corner centered on the mining of copper and silver and because of this activity there was considerable Cornish representation within the village. The enormous number of infant deaths recorded at this cemetery identifies the social difficulties of the time. Over 50 babies and small children died in the period 1890 to 1900.

Criterion (c) – Aesthetic Significance - *an item is important in demonstrating aesthetic characteristics and/or a high degree of creative or technical achievement in NSW or the local area. Consider the work of the monumental masons.*

The cemetery location in open forest, set within an open rural landscape is a tranquil and aesthetically pleasant setting. Although only a few monuments remain they are of a high quality and represent the work of a number of Bathurst and Sydney craftsmen with a good range of types of gravestones and surrounds including marble, granite and steel.

Criterion (d) – Religious Significance - *an item has strong or special association with a particular community or cultural group in NSW, or the local area for social, cultural or spiritual reasons.*

The cemetery has denominational division and four religious groups are represented here including, Wesleyan, Presbyterian, Roman Catholic and Anglican.

Criterion (e) – Educational or Technical Significance - *an item has potential to yield information that will contribute to an understanding of NSW's cultural or natural history, or the cultural or natural history of the local area.*

The cemetery, because of its association with mining activity, has the opportunity to contribute to our understanding of the inherent danger of these activities. Its setting in

bushland may present a woodland with better than average flora and fauna biodiversity structure. The grassland community may be significant.

Criterion (f) – Rarity - *an item that possesses uncommon, rare or endangered aspects of NSW's, or a local area's cultural or natural history.*

As above with respect to grassland community.

Criterion (g) – Typical or Representative - *an item is important in demonstrating the principal characteristics of a class of NSW's or local area, cultural or natural history.*

The cemetery represents a fairly typical late 19th century small mining cemetery, set in a rural landscape, similar in many respects to others of its type.

Statement of Significance

The cemetery established around 1870 and registered in 1887 served the local Sunny Corner community especially the mining community from the 1880s and 90s.

The cemetery has lasting social significance especially with respect to the Cornish population of miners. It is also significant as a recording of infant mortality.

Its location in open forest set within an open rural landscape is a tranquil and aesthetically pleasant setting. The few monuments that remain are of a high quality and represent the work of a number of craftsmen and include materials of marble, granite and steel.

The cemetery has the opportunity to contribute to our understanding of the inherent danger of mining activities. The setting of the cemetery may present a woodland with better than average flora and fauna biodiversity structure. The grassland community may be significant.

Level Of Significance

This cemetery is of local significance.

State Heritage Inventory (SHI form)

A SHI form is available from Bathurst Regional Council.

Community feedback

Before completing the assessment, community or descendant feedback on the initial work undertaken should be obtained.

INVENTORY 1

Inventory of burials and memorials, recorded by B. Hickson 29th August 2007.

Name	First Names	Date of death	Age	Denomination	Cemetery No.	Additional Inscription	Description	Condition
ATTUELL	James Lewis Arthur George Leonard Sarah Ann	02.06.1920 07.07.1919 08.06.1917 14.08.1916 20.09.1934	86 49 46 43 86	Ang	-	In loving memory of Leonard Attuell killed in action in France Peace Perfect Peace	Located some distance from other headstones and in dense bushland. Iron fence. Fine upright monument with elaborate carved and gable top and shoulders, carved clasped hands.	Fair condition slight lean. Light clean would be desirable.
BROWN	Elizabeth Ballangall Henry	17.03.1920 23.07.1897	79 64-65	Ang		In memory of Henry Brown b. 19.12.1832 d. 23.07.1897 also Elizabeth Ballangall Brown 17.03.1920 aged 79.	A double sized bed with wrought iron surround fence, Marble with gable top and square shoulders on sandstone base Mason: J. Burns Bathurst.	Very good condition, some staining.
JONES	John	12.03.1904	79	Ang	-	Memorials to Samuel d. Bathurst (1885), John L. d. Sydney (1911), Agnes d. Sydney (1940), Emily d. Sydney (1940). Verse: Asleep until he comes, Erected by his loving g. daughter Gladys Osborne.	A horizontal bed and raised concrete formed platform with marble headstone which is to the memory of John Jones and several members of the JONES family.	Fair condition, needs light cleaning.
FRANCIS	Emma	15.09.1892	28	Ang		In loving memory of Emma Francis the beloved wife of George Francis who died 15.09.1892 aged 28yrs. The verse: Death, little warning to her gave but quickly took her to her grave oh haste to Christ make no delay for no-one knows their dying day.	A sandstone headstone with semicircular top and rounded shoulders and masonry surround.	A fallen and broken sandstone gravestone with the lead lettering is coming away.
KESSEL	William Henry	11.01.1922	63	Ang		In loving memory of my dear husband William Henry Kessell , who departed this life 11.01.1922 aged 63yrs. Erected by his loving wife and children.	A headstone in this line of four, in polished granite with writing inscribed.	Lettering is now becoming difficult to read.
MONT-GOMMERY	Mary Ann Abigail William Edward	08.03.1920 12.02.1914	77 72	Ang		In Loving Memory Plaques to SMITH family have been added to this monument some obscuring some letters of original.	Polished red granite upstand in scroll style set on stepped sandstone base, with grave bed surround.	2 Metal plaque obscure original headstone.

Conservation Management Plan for Sunny Corner Cemetery

SMITH	Alfred Arnold John William Nada Alfreda Peter Graham	28.06.1991 28.06.1991 05.12.2000 24.07.2005	78 60 83 60	Ang		Added to the above monument as metal plaques.	May be commemorative only.	NA
ODGERS	Robert	19.04.1898	24	Ang		In Loving memory of Robert Odgers beloved son of John & Mary Odgers. Verse: Long days & nights he bore his pain to wait for cure was all in vain but God alone who knoweth best did ease his pain and give him rest.	Part of a group of four standing stones: the first a single sized bed, with a marble scroll style headstone.	Verse in lead lettering is becoming illegible as lettering is falling out .
ODGERS	John Mary Jane	04.08.1911 30.05.1912	78 66	Ang		In Loving Memory of our dear father John Odgers who departed this life 04/08/1911, aged 78 yrs also our dear mother Mary Jane Odgers wife of the above d. 30/05/1912 aged 66yrs. Verse: Time has passed and still we miss them, words would fail our love to tell but in heaven we hope to meet them Jesus do'eth all things well.	A large marble stele gothic shaped with rounded shoulders and carvings which is a standard marble with hands held at the top and underneath "United in Death" written.	Good condition some staining.
MILLS	George Edward Hazel Mary	03.04.2000 03.04.2000	85 83	Ang		Hazel Mary Mills 26/06/1917 to 3/4/2000 g.daughter of the above and her husband George Edward Mills 18/07/1915 to 3/04/2000.	Attached to the John and Mary Odgers. RHS base. (Probably memorial only).	N/A
O'DELL	David	08.01.1933	63	Ang		In memory of David O'Dell On the bottom right hand corner there is an additional small plaque which reads as above: MILLS .	A concrete ledger surround with a small marble plaque. The Mills memorial plaque has been added since the last investigation of this cemetery. Stonemason: J. Burns Bathurst.	Fair.
OSBORN	Eliza Charlotte Elizabeth James Emily	03.01.1915 16.08.1915 26.08.1920 .1940	54 24 79	Ang		Peace Perfect Peace	Semicircular top with cut away shoulders, marble grave stone set on sandstone base. Masonry bed surrounds.	Good
BRYANT	Hilda Muriel Vida Lillian	01.02.1900 23.11.1899	6 m 6 y	Pres		In Loving Memory of Vida Lillian Bryant d 23.11.1899 aged 6yrs. Hilda Muriel Bryant d. 01.02.1900 aged 6 mths. Beloved children of	A marble headstone in a centre of a double bed with wrought iron surrounds. The top of the headstone depicts a dove lying on an anchor. The monument is overall a	Fair condition bad staining.

Conservation Management Plan for Sunny Corner Cemetery

						W P & C A Bryant. Verse: Safe in the Arms of Jesus, He shall gather the lambs with his arm, and carry them in his bosom.	scroll and a rose is lying across the turn of the scroll. This is now only a marked memorial. Monument by Andrews of Rookwood.	
COOK	John Harriet	07.07.1891 26.07.1909	58 75	Wes		In Memory of John Cook d. 07.07.1891 aged 58yrs The inscription not legible but from Proverbs: XXV1 Something not thyself to knoweth not what a day may bring forth. Be thou in the fear of the Lord. All the day long – another proverb. Also Harriett, wife of the above d. 26.07. (1909) 75 yrs. Verse: She has done what she could.	A large granite headstone. The railings were made by J. Slack of Bathurst.	Good.
JEFFREE	Isabel Joseph	22.04.1895 27.06.1916	52 -	Wes		Jeffree – In Loving Memory of Isabel (nee) Salkeld b. 11.07.1843 Durham England. d. 27.04.1895 Sunny Corner NSW. Joseph b. 25.01.1846 Cornwall England d. 27.06.1916 Bathurst.	A small bed indicated by stones around the perimeter and a new headstone marker. Isabel who is named on this headstone then has a headstone of her own immediately beside it; See below.	Good.
JEFFREE	Isabel	22.04.1895	52	Wes		In Loving Memory of Isabel wife of Joseph Jeffree d. 22.04.1895 aged 52 yrs. At Rest.	Large marble semi circular topped headstone relief fan of fern across the top tied with a bow in the centre, set within a single bed grave with a cast iron surround. It was made by Taylor & Sons Sydney.	Good.
COOK	Clara	21.04.1899	33	Wes		In Loving Memory of Clara, wife of Charles Cook. Who departed I am the resurrection and the Life. John 11.25. At the base of the monument it is written: "Until the day breaks".	Polished granite headstone in dark grey granite, a single bed with cast iron surround.	Good.
LEAN	Eliza Samuel	24.08.1909 28.06.1904	74 62	Wes		In Loving Memory of Samuel LEAN d.28.06.1904 aged 62 yrs also Eliza LEAN d. 24.08.1909 aged 74 yrs. Verse: For he knoweth our frame he remembereth we are dust. Psalm chap 3 v. 14.	A standing memorial – marble stone, A double sized bed with a cast iron surround.	A Holly tree which has taken over, needs pruning.
MASHALL	Charles	02.02.1902	47	Wes		MARSHALL - dated 1902.	A single bed surround with cast iron fence and a broken headstone.	Fallen & broken, becoming illegible.

Conservation Management Plan for Sunny Corner Cemetery

RUSHTON	William	27.07.1892	18	Wes		In Loving Memory of William Rushton Dearly beloved son of Joseph and Mary Rushton who died 27.07.1892 aged 18yrs. Verse: unreadable.	A standing sandstone memorial. A single bed with a surround of cast iron.	Good.
THOMAS	Elizabeth William	06.09.1898 24.08.1894	83 83			In Loving Memory of William & Elizabeth THOMAS d. 24.08.1894 & 06.08.1898 Aged 83 yrs. Verse: Thy will be done.	A square marble headstone over a double bed no surround with semi fallen headstone which has been supported on an oblique wall probably of recent construction.	Fallen/supported- fair condition otherwise.
OSSINGTON	William Elizabeth	27.07.1892 16.08.1919	- 74			In Loving Memory of our dear parents William Ossington d. 27.07.1892 and Elizabeth d. 16.08.1919 74yrs. Erected by their loving sons and daughters. R.I.P.	A marble monument representing the open book of life which is mounted on the concrete up-stand. A double grave with wide concrete ledger.	Fair.
BURKE	Elizabeth Michael	05.12.1935 30.04.1901	74 56			This grave memorial formerly recorded was not located on this date.		Unknown
UNKNOWN				R/C			A large surround of double /family, wrought iron fence – no markings.	Fair.
UNKNOWN				Ang			A double bed with wrought iron fence surround and no grave markings, with daffodils growing.	Fair.
UNKNOWN				R/C		A timber surround timber and Victorian wire with pipe rail at the top and on known name.	Nearby is another horizontal bed surround with no known name.	Some repair required.
UNKNOWN				Pres		(no names).	A pair of wrought iron surrounds a double and a single bed.	Fair.
UNKNOWN				Wes		Remnants of one double grave plot, with a wrought iron fence, a very large Eucalyptus tree. (no name) with further graves in this section.	The tree growing in the corner indicates how long this has been unattended.	Fair but has Large tree.
UNKNOWN				Wes		Bed with four picket posts and wire with no other markings.	There is a standing metal stele which now only reads sacred to the memory of (no name).	Fair.

INVENTORY 2

Compilation of Known information on burials.

Sunny Corner Cemetery

NAME	FIRST NAME(s)	D. of D.	AGE	DENOM.	INSCRIP.	AD. INFO
AH YUM		06.08.1896	72		b/of Charles Yum, b. China; unmarked. (DR)	
ANDERSON	George	19.08.1898	70		h/Elizabeth; (Waters); father of 8 chn; unmarked. (DR)	
ANGUS	John	18.11.1895	68		h/Mary Ann (Wilmott); unmarked. (DR)	
ATTUELL	Arthur	07.07.1919	49	Ang	son/James Lewis & Sarah Ann; 7 chn. (H)	
ATTUELL	George A	08.06.1917	46	Ang	son/James Lewis & Sarah Ann; h/Minnie (Symons) father	
ATTUELL	James Lewis	02.06.1920	86	Ang	h/Sarah Ann; father	
ATTUELL	Leonard	14.08.1916	43	Ang	son/James Lewis & Sarah Ann; killed in action in France	
					Peace Perfect Peace. (H) Memorial only.	
ATTUELL	Sarah Ann	20.09.1934	86	Ang	(Armour); w/James Lewis; mother	
					(all the above Attuell family – one headstone)	
ATTUELL	Samuel Alfred	03.02.1892	4 m		son/James & Sarah Ann (Armour) (DR) unmarked.	
ATTUELL	(unnamed male)	17.12.1901	1 h		son/George A & Minnie (Symons); unmarked. (DR)	
BARTLE	Henry	19.07.1890	47		h/Mary Jane; father 8 chn. Unmarked. (DR)	
BECKETT	Arthur Joseph	02.03.1898	4		son/Joseph & Annie (Billing); unmarked. (DR)	
BICKFORD	Bessie	22.07.1891	2 d		dau/Ethorne & Bessie (Goggins); unmarked (DR)	
BLAIR	Herbert John	02.04.1894	4 d		son/William & Maria (Kissell); unmarked (DR)	
BROWN	Elizabeth Ballangall	17.03.1920	79	Ang	dau/Robert & Helen; with Henry; w/Henry	
BROWN	Henry	23.07.1897	64	Ang	son/Thomas & Ann; with Elizabeth Ballangall; dob. 19.12.1832	
					h/Elizabeth (Henderson), no chn. (DR, H)	
BRYANT	Elsie May	19.11.1898	2		dau/Albert & Emma Jane (Cook); unmarked. (DR)	
BRYANT	Hilda Muriel	01.02.1900	6 m	Pres	dau/Walter G & Charlotte A (Paddison) (DR,H)	
BRYANT	Vida Lillian	23.11.1899	6	Pres	dau/Walter G & Charlotte A (Paddison) (DR,H)	
BURGESS	Charles	18.07.1894	4 h		son/Charles & Elizabeth (Vipen); unmarked. (DR)	
BURGESS	George Thomas	06.02.1896	17		son/Henry & Emily (Gray); unmarked. (DR)	
BURKE	Daniel	10.03.1892	4 w		son/Michael & Betsy (Taylor); unmarked. (DR)	
BURKE	Elizabeth	05.12.1935	74		(Taylor); w/Michael; mother; unmarked	
BURKE	Michael	30.04.1901	56		h/Ellen; father; unmarked	
CLARKE	Henry Arthur	13.11.1890	8 m		son/William H & Mary Elizabeth (Roberts); unmarked, (DR)	
CLARKE	Oscar James	05.01.1895	7 m		son/Frederick & Lillian L (Jeffree); unmarked. (DR)	
COLEMAN	Mary	29.07.1900	12 h		dau/John & Harriet A (Turner); unmarked. (DR)	
COOK	Alfred William	17.03.1891	45		son/William & Charlotte (Joslin), h/of Jane; unmarked, (DR)	
COOK	Clara	21.04.1899	33	Wes	w/Charles; (Wiltshire); mother, 3 chn. (DR, H)	
COOK	Harriett	26.07.1909	76 *75	Wes	w/John; mother	
COOK	John	07.07.1891	56 * 58	Wes	h/Harriett; (Pearson), father 5 chn. (DR, H)	
COOKE	John	31.10.1897	75		unmarried, b. Scotland; unmarked. (DR)	
COOPER	Edwin Carl	08.01.1895	10 w		son/Arthur & Margaret (Goggins), unmarked. (DR)	
COOPER	George Harold	12.05.1896	5 w		son/Arthur & Margaret (Goggins), unmarked. (DR)	
COOPER	Thomas	16.06.1896	8 d		son/Thomas & Mary Jane (Campbell); unmarked. (DR)	
CORMACK	Marjory Kathleen	20.09.1891	4 w		dau/John & Louisa (McMahon), unmarked. (DR)	
CUBBON	Joseph William	16.10.1890	11		son/Richard & Mary Ann (Clarke); unmarked. (DR)	
CURNOW	Robert	20.08.1894	58		h/Bridget (Lewis), father 6 chn; son/Robert & Ann;	
					unmarked. (DR)	
CURNOW	Bridget	06.11.1904	62		(Lewis); w/Robert; mother 6 chn; unmarked. (DR)	
DARLEY	Florence Mary	18.01.1894	6 w		dau/James and Mary Ann (Hammill); unmarked. (DR)	
DAVEY	Elizabeth Rachel	10.09.1892	10 d		dau/James & Alice (Wallis); unmarked. (DR)	
DE SANARY	Marius Julien	22.02.1929	69		dob. 16.04.1859; b. France. (H)	
DUNSTAN	John	19.01.1891	57		unmarried; b.Cornwall, England; unmarked. (DR)	
ENRIGHT	William	21.10.1891	49		b. Ireland, father 3 chn; son/Patrick & Margaret;	
					unmarked. (DR)	
EVANS	Margaret Ann	13.12.1898	69		w/Henry, mother 13 chn; Mother of Frances Cooper;	
					unmarked. (DR)	
FERN	John	28.07.1891	56		son/Ah Fern & Ah Gee, b. China; unmarked. (DR)	
FLYNN	Arthur	25.01.1894	2		son/John & Caroline (Wilde); unmarked. (DR)	
FLYNN	Caroline	23.05.1903	53		(Wilde); w/John, mother 14 chn. dau/Philip Wilde &	
					Mary Ann (Barry);unmarked. (DR)	
FLYNN	Eric Reginald	26.11.1893	7 w		son/John & Caroline (Wilde); unmarked. (DR)	
FOX	Melvina Henrietta	21.01.1891	4.5 m		dau/John & Elizabeth (Cassidy); unmarked. (DR)	
FRANCIS	Emma	15.09.1892	28 *38	Ang	w/George Francis, 3 chn., formerly mar. to Henry	
					Worral with 6 chn. (nee White) (DR, H).Fallen &	
					Broken.	

Conservation Management Plan for Sunny Corner Cemetery

					The verse: Death little warning to her gave but quickly took her to her grave oh haste to Christ make no delay for no-one knows their dying day.
GOOLEY	Joseph	19.10.1893	4		son/Patrick & Eliza (Riley); unmarked. (DR)
GREEN	Martha	08.02.1900	85		(Jones), w/William, mother 9 chn; unmarked. (DR)
HARRIS	Stephen	09.01.1892	3		son/James & Mary Jane (Painter); unmarked. (DR)
HEUSON	Martin	05.04.1901	63		born Sweden; unmarked. (DR)
HICKFORD	Bessie	22.07.1891	2 d		dau/Ethorne & Bessie (Goggins); unmarked. (DR)
HULME	James	04.10.1890	72		b. Manchester, England; son/James; unmarked. (DR)
JEFFREE	Isabel	22.04.1895	52	Wes	nec Salkeld; b. Durham England. dob. 11.07.1843; w/Joseph, mother 9, chn, dau/Luke Salkeld & Mary (Taylor). (DR, H)
JEFFREE	Joseph	27.06.1916	70 (Memorial)	Wes	h/Isabel; b. Cornwell England; father. dob. 25.01.1846
JOLLY	Ellen	07.05.1900	44		(Curnow); w/John; mother; unmarked. (DR) dau/Wm.
JOLLY	William John	07.11.1892	8		son/ John & Ellen (Curnow); unmarked. (DR)
JONES	Agnes	..1940(Memorial only)	Ang		dau/John & Catherine; d. Sydney
JONES	Emily	..1940(Memorial only)	Ang		dau/John & Catherine. d. Sydney
JONES	John	12.03.1904	79	Ang	h/Catherine (Llewellyn) 6 chn (DR) (H)
JONES	John L.	..1911(Memorial only)	Ang		son/John & Catherine; d. Sydney
JONES	Samuel	..1885(Memorial only)	Ang		son/John & Catherine; d. Bathurst
KEARNS	Katie	04.12.1903	10 m		dau/Thomas & Elizabeth (Hibbard); unmarked. (DR)
KELLY	Catherine	26.07.1892	36		(Jupp); w/Colin, mother 4 chn; unmarked. (DR)
KELLY	Patrick	30.06.1895	78	unmarried.	b. Kelso; prob. son/John & Ellen; unmarked, (DR)
KELLY	Walter Edward	06.04.1893	1		son/Colin & Catherine (Jupp) DR
KESSELL	William Henry	11.01.1922	63	Ang	b. 03.05.1858; son/Stephen & Mavis; h/Mary A E; father
KING	Alice Hannah	25.07.1893	3 w		dau/George & Elizabeth (Burgess); unmarked. (DR)
KISSELL	Mary Jane	24.06.1890	9 d	dau/Martin & Mary (Connell/O'Connell); unmarked. (DR)	
KISSELL	Samuel Andrew	25.12.1891	3 m	son/Martin & Mary (Connell/O'Connell); unmarked; (DR)	
LAWLER	Alice Margaret	03.01.1905	14 d		dau/Charlotte A; unmarked. (DR)
LAWRY	Lilly	26.03.1900	13		dau/Thomas V & Elizabeth A (Wesley); unmarked. (DR)
LEAN	Eliza	24.08.1909	74	Wes	w/Samuel; mother
LEAN	Samuel	28.06.1904	62	Wes	h/Eliza (Dunstan); father 3 chn. (DR,H)
LE BLANG	Mary	22.03.1891	10 w		dau/Saul & Ida (Hartmann); unmarked. (DR)
LE BLANG	Harriett	30.04.1892	4 m		dau/Saul & Ida (Hartmann); unmarked. (DR)
LEWIS	Louisa	01.08.1893	55		(Deacon); w/Benjamin, mother 4 chn; unmarked. (DR)
LIGHTFOOT	Arthur	17.02.1896	1		son/Frederick & Harriet (Saunders); unmarked. (DR)
LITTLE	William	16.05.1891	2 d		son/Lizzie; unmarked. (DR)
LOWRIE	Emily	07.05.1893	22		dau/William & Jane (McCabe); unmarked. (DR)
LOWRY * LOWRIE	William	14.08.1891	81	son/Thomas; h/Jane (McCabe), father 9 chn; unmarked. (DR)	
MAGILL	Aubrey Vernon	20.09.1891	7 w		son/Robert & Jessie (Starr); unmarked. (DR)
McCABE	John	26.05.1897	56		at Daylight Creek; son/John & Catherine; unmarked. (DR)
McKINNON	Irene Sarah Jane	28.11.1901	1		dau/Frederick J & Sarah Jane (Montgomery); unmarked, (DR)
McKINNON	John Donald	08.05.1899	1 & 7 m	son/Frederick J & Sarah Jane (Montgomery); unmarked, (DR)	
MARSHALL	Charles	02.02.1902	47	Wes son/Edward & Maria; h/Jane (Cook) father 3 chn; fallen & broken	
MILLS	George Edward	03.04.2000	85	Ang	h/Hazel Mary; dob 18.07.1915
MILLS	Hazel Mary	03.04.2000	83	Ang	w/George Edward g.dau/John & Mary Odgers; dob 21.06.1917. (DR,H)
MITCHELL	John	07.07.1898	80		b. Jamaica; unmarked. (DR)
MOLLVILL	Arthur Finlay	18.11.1889	36		h/Jennie; Greenland, unmarked. (DR)
MONTGOMERY	Mary Ann Abigail	08.03.1920	77	Ang	(Hensworth); w/William E; mother
MONTGOMERY	William Edward	12.02.1914	72	Ang	h/Mary Ann Abigail; father
MORAN	Elizabeth	20.08.1896	36		(Tooher); w/Michael J; mother 5 chn; unmarked. (DR)
MORAN	Kathleen Eleanor	13.01.1896	18 m		dau/Michael J & Elizabeth (Tooher); unmarked. (DR)
McNEILL	Neil	22.10.1890	9 m		son/John & Elizabeth (Lewis); unmarked. (DR)
NASH	Harry	07.11.1892	14		son/John & Lizzie (Stevenson); unmarked (DR)
O'DELL	David	08.01.1933	63	Ang	son/David & Annie E
ODGERS	Alice Maud	18.02.1894	5 m		dau/James & Mary Ann (Linn); unmarked. (DR)
ODGERS	Richard Lancelot	29.01.1903	6 days		son/John & Charlotte (Richards); unmarked. (DR)
ODGERS	John	04.08.1911	78	Ang	h/Mary Jane; father (H)
ODGERS	Mary Jane	30.05.1912	66	Ang	w/John; mother (H)
ODGERS	Robert	19.04.1898	24	Ang	son/John & Mary. (H)Long days & nights he bore his pain to wait for cure was all in vain but god alone who no'eth best did ease his pain and give him rest.
OSBORN	Eliza Charlotte	03.01.1915	54 *64	Ang	w/James; mother
OSBORN	Elizabeth	16.08.1915	24	Ang	dau/James & Eliza Charlotte;
OSBORN	James	26.08.1920	79 *1930	Ang	h/Eliza Charlotte; father
OSBORNE	Emily	..1940			dau/John & Catherine Jones; d. Sydney
OSSINGTON	Elizabeth	30.08.1924	74	R/C	w/William; mother
OSSINGTON	William	26.03.1919	72	R/C	h/Elizabeth; father
PARNELL	Charles	25.07.1893	73		h/Mary (Rice), father 5 chn; unmarked. (DR)

Conservation Management Plan for Sunny Corner Cemetery

PEARCE	Matilda	25.09.1902	69		(Mearis); w/John; dau/John Mearis & Rebecca (Howard) and sister of Mary Rushton; unmarked. (DR).
PENROSE	Richard	29.03.1893	61		b. Redruth, Cornwall; unmarked. (DR)
PETTTT	Martha Ann	11.09.1891	31		w/William, 9 chn (DR)
POMEROY	William	07.06.1891	70		son/William & Mary (Lennon), h/Ann (Osborn), father 12 chn; unmarked. (DR)
RUSHTON	Joseph	18.02.1899	53		h/Mary (Mearis); father 10 chn; unmarked. (DR)
RUSHTON	William	27.07.1892	18	Wes	son/Joseph & Mary (Mearis) (DR, H)
SANDERS	Elizabeth	11.08.1890	41		(Coalsworth); w/Stephen; dau/John; mother 3 chn. (DR)
SHARPE	Joseph	11.12.1894	69		son/John & Katherine; h/Ann (Tomlinson); father 8 chn, (DR)
SHARPE	Eustace Norman	28.10.1900	18 d		son/Arthur & Sarah (Lewis); unmarked. (DR)
					son/John Sharpe & Katherine (Rushton).
SIMPKINS	Robert William James	04.12.1899	8		son/John & Sarah (Wilson); unmarked. (DR)
SMITH	James Arnold	28.06.1991	78	Ang	h/Nada Alfreda; father. dob 14.02.1913
SMITH	Hannah	06.05.1895	57		(Curtayn); w/Richard, mother of James; unmarked. (DR)
SMITH	John William	16.11.1930	60	Ang	son/John W & Elizabeth; dob 31.03.1870
SMITH	Nada Alfreda	05.12.2000	83	Ang	(Doyle); w/Alfred Arnold; mother dob 10.06.1917
SMITH	Peter Graham	24.07.2005	60	Ang	son/Alfred Arnold & Nada Alfreda; ashes; unmarked. dob 14.08.1945
STREET	Samuel	01.02.1892	74		son/Samuel; unmarked. (DR)
STRICKLAND	George Sinclair	05.03.1901	8 m		son/George S & Maria R (Ossington); unmarked. (DR)
STRICKLAND	John Henry	11.01.1892	62		son/John & Jane; h/Anna (Boyd); father 8 chn; unmarked. (DR)
TAYLOR	Andrew Bourke	27.11.1905	19		son/Elizabeth; unmarked
TAYLOR	Florence Matilda	08.06.1900	11		dau/Elizabeth; unmarked. (DR)
THACKNEY	Elijah	22.07.1903	67		unmarked. (DR)
THOMAS	Allan Ellis	20.06.1900	4		son/James & Elizabeth K (Ellis); unmarked. (DR)
THOMAS	Elizabeth	06.09.1898	83	Wes	with William.w/William, mother 8 chn. (DR,H)
THOMAS	William	24.08.1894	83	Wes	with Elizabeth. h/Elizabeth (Penrose); father 9 chn. (DR)
THOMAS	William Stanley	16.05.1899	7 m		son/James & Elizabeth K (Ellis); unmarked. (DR)
TITUS	Thomas	21.01.1894	6 w		son/John & Rose Ann (Montgomery); unmarked. (DR)
TOMPKINSON	Victor Alexander				
	Garnet Gale	25.11.1891	6		drowned, son/Lewis & Emily A (Webb); unmarked. (DR)
TONKIN	Jane	14.04.1895	50		w/Thomas, mother 7 chn; unmarked. (DR)
TURNER	Cecil	06.09.1904	6 w		son/Alice C; unmarked. (DR)
WILLIAMS	Roy Nicol	04.01.1894	9 w		son/George & Gertrude (Poyitt); unmarked. (DR)
WILLIAMS	George Nicol	..1904			d. New Caledonia & is buried there.
					h/Gertrude (Poyitt) (H) (memorial only)
WILLIAMS	Gertrude Nicol	..1950	83		(Poyitt); w/George Nicol, m/of Roy Nicol; also known as Meranda, (H-not sighted).
Wolla					
WILSON	James Charles	26.11.1893	5 w		son/Charles & Mary (Beach); unmarked. (DR)
WORRELL	Roy Oliver Charles	24.02.1899	6 m		son/Charles & Mary (Littler); unmarked. (DR)
YATES	Martha	19.05.1897	60		w/George, mother 8 chn; unmarked. (DR)
YOUNG	Hugh Galbraith	20.08.1890	10 d		son/Hugh & Elizabeth (Buchanan); unmarked. (DR)
YOUNG	Maud May	19.11.1900	7 m		dau/Maud May; unmarked. (DR)

The surnames in bold were re-sighted September 2007. BJH.

Sourced: DR – Death Register. Name, H – Headstone.
(name) indicates previous known name.

Note: Anglican is abbreviated (Ang) formerly Church of England (C/E).

Refer image re Montgomery family, new plaques placed on and over the original resting stone.

Conservation Management Plan for Sunny Corner Cemetery

Additional list of persons:

Headstones Unmarked but recorded by Vicki Powys 1991.

HEADSTONES – UNMARKED

SMITH	William	1930	60	h/Lena; father; (Motgomery) 5 chn
HEMSWORTH	John	21.07.1908	73	h/Blanche (McCarthy); a marble headstone was visible 1980's now gone, his grave has an iron fence around it and is next to Montgomery's just inside gate.
STAINES	Catherine	1924	70	(Bruce); w/James.
PASSERI	Garcomo Jimmy	1919	54	d. Sunny Corner
RILEY	Jacky	c. 1930	80	
LEWIS	Benjamin	14.07.1911	84	h/Louisa (Deacon) 6 chn.

PROBABLE BURIALS

TONKIN	Grace May	18.02.1890	7 wks	dau/Thomas & Jane
STAINES	Ernest Clarence	05.02.1899	3 m	son/Louisa Jane

References:

- Evans Local Government Area – Cemetery Register, (North) 2003.
- Australian Cemeteries Index: <http://cemindex.arkangles.com> listing updated 21st June 2007.
- This cemetery is administered by the Bathurst Regional Council:
council@bathurst.nsw.gov.au
- Site visit by B.J. Hickson, (sited 29th September 2007).
- History: Extracted from records of Sunny Corner Cemetery by Vicki Powys – 1991.

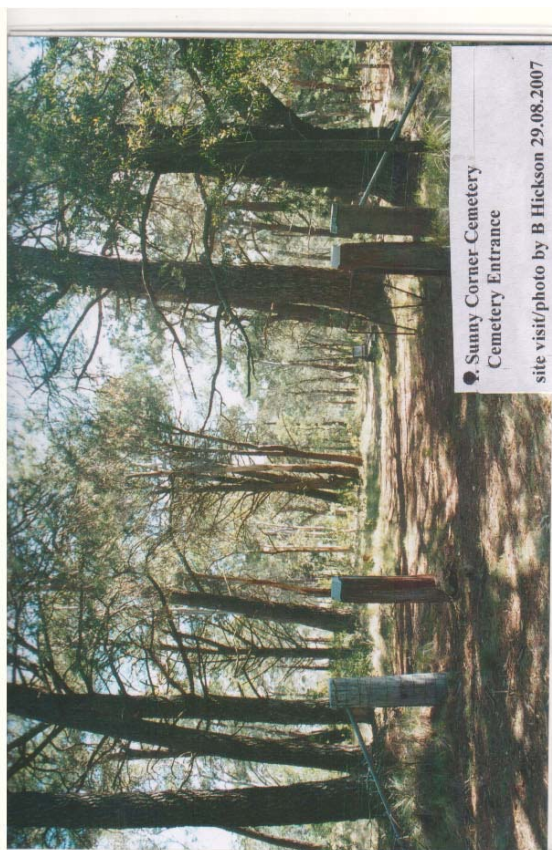
PHOTOGRAPHIC IMAGES INDEX

(recorded by B. Hickson on 29th September 2007).

SUNNY CORNER CEMETERY

Surname	Page Location.
General	1
ATTUELL	8
BROWN	2
BRYANT	4,5
COOK	6
FRANCIS	3
JEFFREE	6
JONES	3
KESSELL	2
LEAN	7
MARSHALL	5
MONTGOMMERY	8,9
ODGERS	2
OSBORN	8
OSSINGTON	4
RUSHTON	7 (Note iron stele in foreground)
SMITH	8,9
THOMAS	7
UNKNOWN	6 (large tree growing in grave plot)
UNKNOWN	9 (wrought iron surround)
UNKNOWN	3 (timber surround with pipe rail) Catholic
UNKNOWN	3 (double wrought iron surround, daffodils) Anglican section
UNKNOWN	4 (large surround double bed wrought iron)
UNKNOWN	9 Iron stele

Conservation Management Plan for Sunny Corner Cemetery



Conservation Management Plan for Sunny Corner Cemetery



Conservation Management Plan for Sunny Corner Cemetery



Conservation Management Plan for Sunny Corner Cemetery



Sunny Corner Cemetery
OSSINGTON - Catholic section
site visit/photo by B Hickson 29.08.2007



Sunny Corner Cemetery
Unknown - Presbyterian section
site visit/photo by B Hickson 29.08.20



Sunny Corner Cemetery
BRYANT - Presbyterian section
site visit/photo by B Hickson 29.08.2007



Sunny Corner Cemetery
Headstone: BRYANT - Presbyterian
section, photo by B Hickson 29.08.2007

Conservation Management Plan for Sunny Corner Cemetery



Conservation Management Plan for Sunny Corner Cemetery



Conservation Management Plan for Sunny Corner Cemetery



Conservation Management Plan for Sunny Corner Cemetery



Conservation Management Plan for Sunny Corner Cemetery

