



*Conservation Management  
For Georges Plains Cemetery*

## CONTENTS

INTRODUCTION .....	3
What is a Conservation Management Plan .....	3
The Process .....	3
GEORGES PLAINS CEMETERY .....	4
Date .....	4
Location and property description .....	4
Method .....	4
Authors.....	4
Definitions.....	4
SUMMARY & RECOMMENDATIONS .....	5
Summary:.....	5
Recommendations:.....	5
PART A - INVESTIGATE SIGNIFICANCE .....	7
Physical Description .....	7
Plan .....	8
Setting and curtilage .....	10
Fencing and gates.....	10
Layout and special features.....	11
Monuments and grave sites.....	12
Monumental masonry .....	13
Inventory sheets .....	14
Biodiversity: Plantings and fauna .....	14
Other Features.....	15
Documentary evidence.....	15
Summary of physical description.....	15
History.....	16
Land history .....	18
Management history.....	18
Listings.....	18
Make Comparisons .....	19
Summary of history.....	20
ASSESS SIGNIFICANCE .....	20
Criteria .....	20
Statement of Significance .....	22
Level Of Significance .....	22
State Heritage Inventory (SHI form) .....	22
Community feedback.....	22
INVENTORY 1 .....	23
INVENTORY 2 .....	34
PHOTOGRAPHIC IMAGES INDEX.....	37

## INTRODUCTION

### ***What is a Conservation Management Plan***

An important tool in caring for a heritage item can be a conservation management plan (CMP). This document provides a guide for future care and use, including any new development. Dr James Kerr describes a CMP as "...a document which sets out what is significant in a place and, consequently, what policies are appropriate to enable that significance to be retained in its future use and development. For most places it deals with the management of change" (Kerr, *The Conservation Plan*, National Trust NSW, Sydney 2000: 1).

### **The Process**

#### **1 INVESTIGATE SIGNIFICANCE**

- Investigate the physical evidence remaining
- Investigate the history of the cemetery
- Check on listings
- Decide upon relevant Local and State historical themes
- Make comparisons with other cemeteries
- Summarise what you know about the item

#### **2 ASSESS SIGNIFICANCE**

- Assess significance using the NSW heritage assessment criteria
- Prepare a succinct statement of heritage significance
- Determine level of significance
- Write up all your information including SHI form
- Get feedback from your community
- Complete your significance assessment

#### **3 MANAGEMENT of SIGNIFICANCE**

- Consider the management implications of the cemetery and its level of significance
- Analyse the constraints and opportunities
  - existing conditions
  - owner & descendant requirements
  - statutory and zoning requirements
  - other constraints
- Prepare conservation recommendations and management policies covering
  - monuments
  - maintenance
  - interpretation
  - urgent works
- Get feedback from the community
- Recommend a process for carrying out the conservation management recommendations

## **GEORGES PLAINS CEMETERY**

St John's Anglican Church Cemetery.

### **Date**

22nd April 2008.

### **Location and property description**

Lot 2, DP 858464 Saint John's road, Georges Plains, Parish: Grantham, County: Bathurst.

### **Method**

The method used in this study is based on the Australia ICOMOS 1988 Charter for the Conservation of Cultural Significance (The Burra Charter); Conservation Management Guidelines and Heritage Assessment by the NSW Heritage Office and Department of Planning 1996; NSW Heritage Manual and James Semple Kerr's 'The Conservation Management Plan' printed by the National Trust of Australia, NSW.

### **Authors**

Barbara Hickson Architect and Heritage Adviser using the Bathurst Regional Cemetery CMP Proforma.

All recent images, unless otherwise stated, are by Barbara Hickson.

### **Definitions**

See appendices: The Burra Charter.

## SUMMARY & RECOMMENDATIONS

### Summary:

This is a small cemetery representing the Anglican parish of Georges Plains. It has been in continual use for 140 years. Part of its significance is related to its proximity to the church of St. Johns and its special setting within a screened area that includes the church. However the church and cemetery were subdivided in 1996 and the church is now in private ownership, although as yet, no fence has been erected between them.

While the church remains without a current use there is no foreseen difficulty with the church and cemetery sharing the same area. However if, in the future, the church is adapted for another use, this may pose potential issues. Fencing and access will potentially be primary issues. The owner of the church should be consulted regarding suitable outcomes.

Another major issue for this cemetery is the amount of damaged grave plots, especially those with collapsed ledgers. They are possibly posing a physical problem to visitors in this sloping graveyard and it should be a priority to repair them.

The cemetery was an important part of the development of George's Plains village and contains monuments to some notable pastoralists including members of the Cox, Stewart, Smith and Peacock families and many immigrants or descendants of England.

The cemetery is an important history resource and has a number of exceptionally fine monuments within its grounds.

### Recommendations:

#### **1. That Bathurst regional Council adopt this CMP.**

#### **2. Develop a site management plan.**

Include implementation of the study recommendations from Part 8 of the Bathurst Regional Heritage Study 2007, and the site specific recommendations developed as part of this CMP as follows:

- **Repairs to monuments:** Draw up a schedule of conservation work, highlighting the most urgent works. Refer to the Inventory 1 of memorials contained in this document, and to the 'condition' column for specific works. In particular priority should be given to repairs to broken and collapsed ledgers.
- **Site Works:** Investigate causes of ledger collapses, (possibly vermin).

- **Fencing:** Investigate the future need to separate the cemetery from the church in a manner that does not reduce the cemetery or the church's significance. Liaise with adjoining owner during this investigation. In the meantime check over, repair and extend as necessary, and then maintain existing fencing. Consider the introduction of a new main gate providing access off Saint Johns Road.
- **Interpretation:** Consider interpretation information including:
  1. A sign at the cemetery gate listing known burials up to approximately 50 years ago, and a brief history.
  2. Consider making available interpretation materials in printed form or information on Council's website.
  3. A seat or place of rest, near the gate sign.
- **Maintenance:** Draw up a program of maintenance. Control weeds where they are causing damage. Pruning is preferred rather than weeding, where possible. Where existing maintenance of monuments in this Anglican cemetery is occurring, encourage the continuance of this maintenance.
- **Documentation:** Document all new works and conservation works.
- **Staff resource:** Encourage Council to allocate of a special officer who has an interest in the preservation of cemeteries, whose role should be to oversee the care and maintenance of rural cemeteries while encouraging local community groups and/or descendants to assist.
- **Biodiversity:** Is probably not an issue in this cemetery. Consider assessment of fauna in the cemetery and adjacent areas in the format contained in this CMP document.

### 3. Re-Zoning:

The current zone of the property is 1 (e) Outer Rural, as defined by the Bathurst Regional (Interim) Local Environmental Plan 2005.

It is recommended that the zones of the cemeteries be zoned as *SPI - Special Activities*, under the future Comprehensive LEP. This would ensure that the zone will assist in the conservation of these cemeteries by restricting the potential development on that land.

### 4. Listing:

Georges Plains, St. John's Anglican Church and Cemetery is currently listed as a heritage item on the Bathurst Regional (Interim) LEP 2005. (No: 131).not presently listed.

The cemetery should be listed as a item of heritage in the 2009 Comprehensive LEP.

St John's Anglican cemetery was listed by the National Trust of Australia on 20<sup>th</sup> July 1987.

### 5. Community Consultation:

Local members of the Georges Plains community, and/or descendants of those buried at St. John's Anglican cemetery, should be encouraged to comment on, or add to, this CMP, especially, those who have made themselves known to the Council through

correspondence to Council regarding this cemetery, refer to Council's cemetery files and the letters from the descendants.

## PART A - INVESTIGATE SIGNIFICANCE

### *Physical Description*

The land area containing the cemetery was formerly part of the St. John's Anglican church-yard of Georges Plains. The land was subdivided in 1996 and the cemetery allotment was separated from the church, (refer aerial image in figure 5). The cemetery is now owned by Council and the church is privately owned, although there is no physical evidence on site of this separation.



**Figure 1:** An excellent example of a polished granite monument dedicated to Annie and William Dowling.

The cemetery is located on steeply sloping land, on the northern side of the church. The land is accessed from a driveway and gate off Rockley Street. The cemetery land runs parallel to Saint John Street.

The church and the cemetery are visually screened from the surrounding land by a dense thicket around the outer boundary.



**Figure 2:** The earliest grave within the cemetery, dedicated to William Stewart.

The church is a very attractive building, designed by Edward Gell. Its steep iron roof with decorative cast iron ridging, flared over colourful squared rubble walls and semi-octagonal sanctuary with lancet lead light windows, adds greatly to the church yard atmosphere of the site. At the south west corner there is a partially enclosed porch and small corner bell tower. The church is not presently in use.



## Conservation Management Plan for Georges Plains Cemetery

There are approximately 123 names on the existing monuments, which are predominantly modest bed style grave plots, with some more outstanding stele dominating the overall view and generally dating from the late 19<sup>th</sup> century.

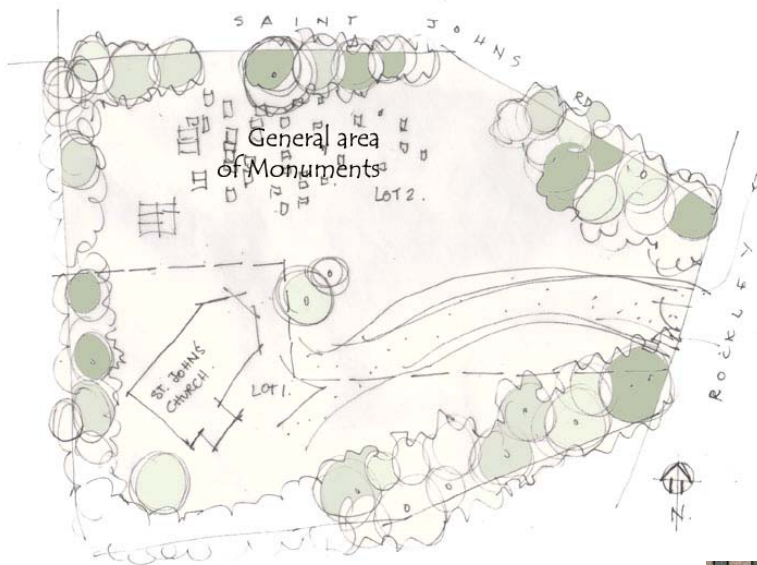
The earliest grave was installed the year the church was built, in 1868, and is an exceptionally fine monument with semicircular top and shoulders and embossed carving of a draped urn, dedicated to William Stewart who died 15<sup>th</sup> October 1868, aged 63 years.

Other early burials include:

- William Peacock who died 18<sup>th</sup> August 1875 aged 69 years.
- Margaret Isabella Jarvis, an infant who died 17<sup>th</sup> February 1877.
- Thomas Munro who died 10<sup>th</sup> June 1877 aged 71 years.
- Joseph Smith who died 01<sup>st</sup> October 1879 aged 63 years is recorded in this cemetery with a monument. However, he was buried elsewhere. He was an important benefactor to the church.

## Plan

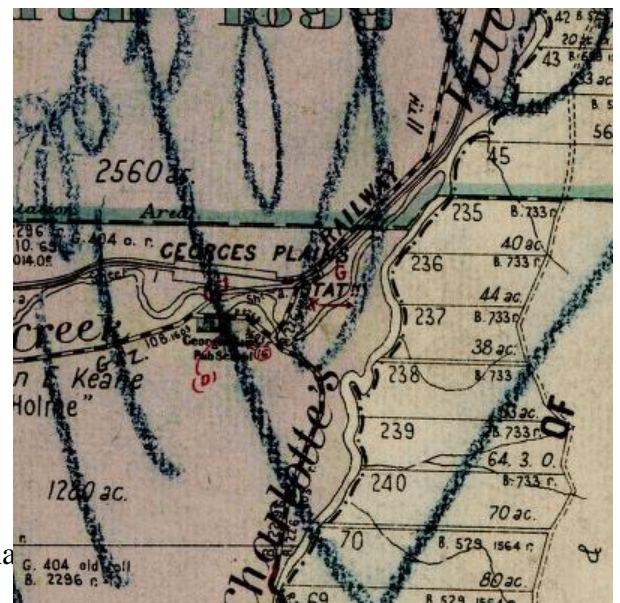
The sketch below by Barbara Hickson shows the general layout of cemetery and graves.



**Figure 3:** The general layout of the Georges Plains Cemetery and graves, (Barbara Hickson).

The village of Georges Plains is only shown in general terms on the Parish Maps of Grantham. There is no available Parish map of the village of Georges Plains, although they would probably have existed.

**Figure 4:** The general location of the Georges Plains village as illustrated by the Parish Map.



Barbara J. Hickson in association with Bathurst Regional





**Figure 5:** The above aerial image was provided by Bathurst Regional Council. The cemetery is clearly visible at the centre of the image, illustrated on Lot 2 DP 858464.

## Setting and curtilage

The cemetery is located close to Rockley Street which forms part of the main road to Bathurst. Access from the road is at the base of a small hill.

This cemetery is located within a special setting on a small hillside and beside the St. John's church, a former Anglican church. The attractive stone church is visible throughout the cemetery and dominates the internal views while views beyond the cemetery are very limited by thick hedging around the perimeter of the site. Beyond this hedging the views are only distant. This gives the cemetery particularly closed in and peaceful setting, even though it is within a close proximity from the junction of two roads.

The land slopes steeply from west to the east and the graves generally face east, which is the current direction of access. Therefore as one walks through the cemetery, one walks up the slope.

## Fencing and gates

The present boundary fencing is shared by the former Anglican Church. In the future it will be required to investigate the possible separation of the cemetery from the church in a manner that does not reduce its significance. This would allow the privately owned church to have separate security from the cemetery, which is naturally visited by descendants of persons interred there, who may have no reason to visit the church.

Most of the fence that remains consists of old timber posts and wire, generally in poor condition. In some parts the fence is possibly missing, replaced by the thick shrubs. It is important to check over, repair and then maintain the existing fencing, while retaining the screened effect of the surrounding shrubbery.



*Figure 6: an image depicting the existing boundary fence with the thick shrubbery behind.*

It may be useful to consider the introduction of a new main gate to the cemetery from Saint Johns Road. However the different height of the road and the need to 'cut through' the shrubbery will be limiting factors.



The former Evans Shire Council in their correspondence to the descendants of 'Hicks', family indicated in 2000 that a new entry was proposed. Apart from engineering considerations, such a consideration would also require liaising with the owner of the church. Any new boundary fence should not restrict views to and from the church.

### **Layout and special features**

The graves are set out generally on contours from north to south, up the slope. The older and more elaborate monuments tend to be on the lower eastern end with more modest bed-style graves at the western end.



*Figure 7: This group of bed style plots are located at the western, or top end, of the cemetery.*

There are a number of family groups with consistent style and design. These are predominantly the bed style with upstand and plaque such as the graves of the Drew family members in the figure below.



*Figure 8: The graves of the Drew family members.*

## Monuments and grave sites

There is a considerable range of monuments from the elaborate Victorian to recent much more modest grave beds.

The grave of William Stewart, who died 15<sup>th</sup> October 1868, (the oldest grave within the cemetery), is a fine sandstone monument with semicircular top and shoulders, and carved with a funeral draped urn in relief at the top. His wife Jane is also commemorated by this monument. He was possibly related to Major-General William Stewart, a very early Bathurst colonial resident.



**Figure 9:**  
*Monument to Joseph Smith.*

Other early burials include James Mackander, (1876), William Peacock, (1875), baby Margaret Jarvis, (1877) and Thomas Munro (1877).

Grand monuments also include those of Annie, (died 1902), William Dowling, (died 1912), Catherine, (died 1930), Robert Pratley, (died 1899), Catherine, (died 1890), Kenneth Barnes, (died 1888), Joseph Smith of *Mildura*,<sup>1</sup> (1879).



**Figures 10: and 11:**  
*The monuments of Dowling, Pratley and Barnes are pedestal style monuments. They are tall edifices and visually dominate the small cemetery.*

<sup>1</sup> Mildura Homestead - Cow Flat Road Georges Plains. This is believed to be only a memorial, and not actually where Smith is buried.



## Conservation Management Plan for Georges Plains Cemetery

A major problem in this cemetery is the collapse of ledgers. This may have been caused by burrowing animals, or the nature of the ground on this sloping site. Examples are the graves of Isaiah and Daisy West and Leticia Fardell in the figures below.



*Figures 12: and 13: Isaiah and Daisy West's grave, (left hand side), and Leticia Fardell's grave, (right hand side).*

Also illustrated on the 'West' memorial in figure 12 above is an example of extreme staining. This is very evident on a number of marble monuments. It is believed to be caused by the reaction of lead lettering with marble stone that is generally of inferior quality. It is probably not possible to remove such staining.



*Figure 14: In the case of the staining in the above image, it has almost made the monument to Rachael and Jane Cheney illegible.*

### Monumental masonry

Only two monumental masons' names have been noted within the cemetery, being Cam Reed and J. Burns, both of Bathurst. Due to the close proximity of Georges Plains to Bathurst it is possible that other stone masons were rarely considered.

Cam Reed's monuments are in a row, (to Bestwig, Buckman and Turnbull), and are simple bed style graves with well executed marble scroll upstands. Their similarity suggests a possible family relationship.

The stone mason: J. Burns illustrates his versatility with a range of monuments to Slader; a marble semi-circular stele on a masonry base, with wrought iron surround, Davidson; a single marble up-stand, semi-circular shaped top with cut away shoulders, on a masonry base, Cox; a marble up-standing semi circular with engraved cross and rope carved edge and a wrought iron double bed surround, and Booth; a polished red granite stele with gothic peak.

There is considerable quality and diversity within this monument group.

### **Inventory sheets**

A description of most of the grave plots or headstones is included at the back of this study. Refer to Inventory 1 for more detail and for condition assessments.

### ***Biodiversity: Plantings and fauna***

The cemetery, as noted above, is located within a village in an open grassland area surrounded by hedging or shrubbery along the fence line.

A survey of the site undertaken in September 2003 by staff from the former Evans Shire Council, recorded the following information about the plants in the Georges Plains cemetery:

Structural formation class: Mid slope – easterly aspect.

Dominant Eucalypt Species: None. Elm, Pine and privet edging.

Ground covers: Grassland

Weeds: NA- mostly exotics.

General health or condition: Degraded, small patches of Themeda grassland with exotics.

Management Issues: Heritage, not natural conservation.

**The recommendations for future management are:** Manage for heritage considerations.

**The Biodiversity Conservation in this cemetery is not an issue.**

No fauna was recorded within the cemetery or within the vicinity at the time of the authors site visit. On future site visits any fauna observed should be recorded in the following table form and added to this CMP:

*Table 1: How to record observed Fauna.*

Fauna Record			
Xx minute period	Type observed	Number observed	Suggested by indirect observation
Birds			
Mammals			
Reptiles			



## Other Features

The major feature of this site is the St. John's Anglican Church, constructed in 1868. This is an important and interesting example of the noted local architect Edward Gell. This work is a predominant element overlooking the village, though physically separated from it by the later progression west of the railway line. The architect Edward Gell worked in the Bathurst area between 1858 and 1880. Unusual elements in the church building include the steep iron roof with decorative cast iron ridging, flared over colourful squared rubble walls which enclose a semi-octagonal sanctuary and include lancet lead light windows, with a large window behind the altar. At the southwest corner there is a partially enclosed porch and small corner bell tower. Internally the church contains a highly decorative reredos dedicated to Joseph Smith.

St John's Anglican Church is a particularly picturesque building and is an item of significance in its own right which is listed by the National Trust.

## Documentary evidence

Present records indicate 123 burials or memorials in this cemetery representing approximately 51 family surnames. Mistakes in spelling make it impossible to be exact. There are a number of references to these burial lists which include:

1. Evans Local Government Area – Cemetery Register, (South), 2003.
2. Australian Cemeteries Index: <http://cemindex.arkangles.com> listing updated 21<sup>st</sup> June 2007.
3. Site visit 29<sup>th</sup> September 2007 by B.J. Hickson.
4. Cemetery inscriptions by Mr and Mrs Eric Campbell 17<sup>th</sup> May 1965.

A survey by Evans Shire Council also includes a transcribed list by Stewart, Foster and Williams of the Bathurst Family History Group in 1986.

In September 2003 Evans Shire Council staff recorded the plants listed in the section above and some black and white photographs from this survey are on Bathurst Regional Council files.

## Summary of physical description

- This cemetery is located about 12 km south of Bathurst on the road to Trunkey Creek.
- The access to the cemetery is easily accessible though not signposted.
- The cemetery is located in a churchyard on generally cleared and sloping grassland with some exotic funerary plants and various exotic species of trees notably pines, elm and privet surrounding it.
- The trees and shrubs form a hedging around the cemetery and the Church of St. John's, providing the churchyard with privacy and a peaceful aspect.
- The cemetery is known as the Georges Plains or St. John's Cemetery, and is an Anglican cemetery with approximately 140 years of continued use. The monument dates, range from 1868 to the present.

## Conservation Management Plan for Georges Plains Cemetery

- There is a fair to good range of monument types in design and style and good examples of the work of stone mason J. Burns of Bathurst.
- The cemetery is in poor condition generally.
- The cemetery has a shared fence which is old post and wire, much of it in very poor condition. Therefore the cemetery depends on the surrounding shrubbery for security.
- There are some fallen and broken monuments, others with broken and collapsed ledgers, and others that are becoming illegible, (some through staining).
- There are about 25 remaining older style stele. Many more are of the 'bed style', including recent burials. The monuments represent some 123 known people. However this is an incomplete record and it is not known how many people are interred at this cemetery.
- The monuments face east towards the existing entry and passing road.
- The monuments form an historical record containing much information about the life of the times, the family associations and occasionally where people originated from.



*Figure 15: The small grave of baby HALEY, who died at just 2 hours old.*

## **History**

**In Brief:** (Taken from Bathurst Regional Council's State Heritage Inventory database).

A meeting was held at Georges Plains early in 1867 to organize a committee of the church society to raise the stipend for a clergyman for the country district of which Georges Plains was to be the parish church. Since there was no church building in the district at the time, services were being held in private homes. However the foundation stone for St John's had been laid just prior to this meeting.

The Anglican Parish of Georges Plains was established due largely to the drive of the Rev. H. Langley. He superintended the construction of St. John's Church himself, (the Rev Langley later became the Bishop of Bendigo). The Rev F.B. Boyce succeeded

Langley in 1868 and immediately worked towards the building of a church at Fitzgerald's Valley.

In 1875 Georges Plains became a separate parish with the Rev Fred Williams in charge. The Rev Young became the next rector at Georges Plains in circa 1881 and stayed until February 1903. After him followed the Canon F.J. Thompson, The Revs Gordon Lidy, Robert Douglas, A.G. Creswell and S.C. O'Ball.

The Smiths of *Mildura* were involved in the establishment of St John's Church of England at Georges Plains. Joseph Smith was the benefactor (providing land and money), for the church in 1867-1868. He was also a warden of the church. In 1874 he again gave 26 acres of land located on the opposite side of Queen Charlotte's Vale Creek to *Mildura* for the construction of St John's parsonage. Smith also provided a significant amount of the funds to build the residence. It was about this time that the Rev Boyce of St Johns, Georges Plains married Caroline Stewart, Mrs. Joseph, (Jane), Smith's sister.

When Joseph Smith died on 1st October 1879, he was buried at Hay, yet in his memory a polished granite memorial was erected in the cemetery at St John's, Georges Plains. The gold lettering has faded from the prominent polished grey marble pedestal, mounted on a concrete sloped base. This type of pedestal normally was capped by a draped urn of similar material. Smith's monument does not include such a feature. Inside the church there is a decorative reredos, a beautiful memorial to his memory. The Bathurst Times of 16th July 1881 announced the installation of a memorial in St John's Church. The advertisement listed all those who donated funds towards the memorial including local identities such as Mr G. Lee, TR Icely, Mrs J Stewart and Mr G Sydney Smith.

The cemetery was subdivided from the church in 1996 and the cemetery portion came into the possession of the former Evans Shire Council.

The following Thematic History has been abridged from the **Bathurst Regional Heritage Study 2007. The author of the Thematic History is Dr. Rob McLachlan.**

Georges Plains is located approximately 12 kms south of Bathurst, via Perthville. Within the land of the Wiradjuri people the village of Georges Plains, named by European settlers in honour of King George III, was one of at least three Government stock stations established when the western side of the Macquarie River was reserved for Government use.

European settlement in this area originally consisted of large pastoral grants and the village of Georges Plains was once a fully functioning township servicing the needs of the rural area. It is still possible to see the remnants of the shop and post office in the main street, the pleasing, picturesque railway station still stands, as if waiting to welcome alighting passengers, and the old pub remains, but as a private residence. The school

masters house is also now a private home, but the one room Georges Plains Public School - which endeavoured to educate generations of local children - was burnt down in 1973.

Although many of the original large grants were broken up and the prosperity of high wool prices of the 1950s has now declined, some of the descendants of the first settlers still reside in the area and many of the early buildings and homes still stand.

The township of Georges Plains has lost much of its original character and function, but St John's Church, standing shyly obscured behind large trees, is a reminder of the workmanship, strength and courage of its time and offers something beyond the apathy of many modern day buildings. It is also a unique reminder of the generosity of pastoralist Joseph Smith, who owned nearby 'Mildura', one of the land grants in the Georges Plains area. It is thought that the death of his young son may have influenced his generous donation of the land and the building costs for the exquisite St John's Church, built in 1867 and designed by architect Edward Gell. (Provided by Bathurst District Historical Society.) Later Smith donated additional land for a rectory to be built.

## **Land history**

Possibly donated by Mr. Joseph Smith in 1867 the cemetery and church were managed by the Anglican Diocese of Bathurst until the cemetery was subdivided from the church in 1996 and the cemetery portion came into the possession of the former Evans Shire Council.

## **Management history**

The Cemetery was managed by the Bathurst Diocese of the Anglican Church until it was subdivided in 1996. The church was then sold privately and the cemetery came into the possession of the former Evans Shire Council. The council managed the cemetery until amalgamation with Bathurst City Council in 2005. It is now managed by Bathurst Regional Council.

## **Listings**

The cemetery is currently listed as a heritage item on the Bathurst Regional (Interim) LEP 2005. In the recent Bathurst Regional Heritage Study it was recommended for listing at the local level. This study supports that recommendation.

The cemetery is recorded in the State Heritage Inventory database, which is maintained by the Bathurst Regional Council.

Georges Plains cemetery was listed by the National Trust of Australia on 20<sup>th</sup> July 1987. The reason given for the listing is included below:

*St Johns Anglican cemetery provides an outstanding setting, Victorian in character, to the adjacent classified church. The site, layout and plantings, with impressive driveway*

## Conservation Management Plan for Georges Plains Cemetery

*and careful siting of gravestones provide a focal point in the surrounding landscape. The cemetery features a grand layout and an extremely fine range of late 19<sup>th</sup> century monuments, some of which are a very unusual form.*

The following table includes NSW heritage themes relevant to this cemetery. For a more complete list of themes refer to the 'NSW Historical Themes' on the NSW Heritage Branch, Department of Planning website.

**Table 2:** NSW Heritage Themes relevant to the Georges Plains Cemetery.

Australian Theme	NSW Theme		Notes	Examples
2 Peopling Australia	Ethnic influences	English	Activities associated with common cultural traditions and peoples of shared descent, and with exchanges between such traditions and peoples.	Many British descendants are interred within this cemetery.
3 Developing local, regional and national economies	Agriculture	Pastoralism And farming	Activities relating to the cultivation and rearing of plant and animal species, usually for commercial purposes.	Connections to some very early pastoralists such as Joseph Smith, Henry Cox and the Stewarts. Robert W Peacock was an important and early manager of the Coolabah (Bathurst's) Experiment Farm.
4 Building settlements, towns and cities	Towns, suburbs and villages	village	Activities associated with creating, planning and managing urban functions, landscapes and lifestyles in towns, suburbs and villages.	This cemetery was part of the church yard in the village of George's Plains.
4 Building settlements, towns and cities	Land tenure	Church graves	Activities and processes for identifying forms of ownership and occupancy of land.	See above. It is now a public cemetery accessed through private land which contains the former church.
8 Developing Australia's cultural life	Creative endeavour	Stone masonry	Activities associated with the production and performance of architectural, artistic and other inventive works.	Excellent work by architect Edward Gell. Good stone masonry.
8 Developing Australia's cultural life	Religion	Anglican	Activities associated with particular systems of faith and worship.	Cemetery associated with the Church of England.

## Make Comparisons

There are many other small cemeteries in the local government area generally associated with small settlements.

Possibly the cemetery most similar to this cemetery is that of Turondale. Originally a church cemetery, it is now a public cemetery, and of great significance to several families in the district.

## Summary of history

- Georges Plains was an important stop over place, on the main road between Bathurst and Trunkey Creek, within an important pastoral district and close by the Trunkey and Rockley goldfields.
- Its principal historic period for the village was from 1867. The cemetery was in use at the time the church was constructed: 1867-68. The first known grave is that of William Stewart 1868.
- The cemetery is still in use after approximately 140 years.
- This cemetery served the general community of Georges Plains, and district and burials include many of the pastoralist's families of the district.
- Among the oldest memorials are those of James Mackander, Robert W. Peacock, Margaret Jarvis and Thomas Munro, all dating from the 1870s.
- Robert W Peacock was an important and early manager of the Coolabah, (Bathurst's), Experiment Farm. Peacock was impressive in his introduction of methods to educate both students and local farmers through practical demonstrations, his systematic record keeping and through his encouragement and the establishments of the farm orchards.<sup>2</sup>
- This cemetery was designed to cater solely for Anglicans, being associated directly with an Anglican church.
- The cemetery was originally managed by the Bathurst Anglican Diocese.
- Records for burials are incomplete and dependant upon legible memorials. More people may have been buried in this cemetery than records suggest.
- The cemetery and church hold special significance to Joseph Smith, a major land benefactor and to whom a memorial stands in the cemetery, although he is buried at Hay. Inside the church a special decorative reredos is also devoted to his name.

## ASSESS SIGNIFICANCE

### Criteria

Following the Heritage Branch guidelines, a statement of significance is developed by working through the following assessment criteria, (adopted from the Heritage Office CMP guideline):

***Criterion (a) - Historical Significance*** - an item or place is important in the course, or pattern, of NSW's cultural or natural history, or the cultural or natural history of the local area.

The cemetery is an important part of the development of the village of George's Plains and an integral part of the Anglican Church and yard, commencing in 1867.

---

<sup>2</sup> Theo Barker: Vol 2 'A History of Bathurst' p362-3



**Criterion (b) – Social Significance** - *an item or place has strong or special association with the life or works of a person, or group of persons, of importance in NSW's cultural or natural history, or the cultural or natural history of the local area. This might include a local family of note, pioneers, or soldiers.*

The cemetery contains monuments to some notable pastoralists including members of the Cox, Stewart, Smith and Peacock families and many immigrants or descendants of England.

**Criterion (c) – Aesthetic Significance** - *an item is important in demonstrating aesthetic characteristics and/or a high degree of creative or technical achievement in NSW or the local area. Consider the work of the monumental masons.*

There is a fair to good range of monument types in design and style, with around 25 stele from the 19<sup>th</sup> century, and good examples of the work of J. Burns of Bathurst. The quality of the early monuments is high.

The cemetery location is visually screened by perimeter plants from the passing road, and is set on a east facing slope and within the church yard of a notable church designed by architect Edward Gell, St. Johns Anglican church. This gives the graveyard a special aesthetic appeal in its setting, being both peaceful and private.

**Criterion (d) – Religious Significance** - *an item has strong or special association with a particular community or cultural group in NSW, or the local area for social, cultural or spiritual reasons.*

This cemetery caters only for Anglicans, being associated directly with an Anglican church, within the churchyard.

**Criterion (e) – Educational or Technical Significance** - *an item has potential to yield information that will contribute to an understanding of NSW's cultural or natural history, or the cultural or natural history of the local area.*

The monuments provide a good technical resource of stone masonry.

They also form an important historical reference containing much information about family connections.

**Criterion (f) – Rarity** - *an item that possesses uncommon, rare or endangered aspects of NSW's, or a local area's cultural or natural history.*

Because of the setting of this cemetery as a church graveyard, this is a relatively rare cemetery for Council to own.

**Criterion (g) – Typical or Representative** - *an item is important in demonstrating the principal characteristics of a class of NSW's or local area, cultural or natural history.*

The cemetery is a good example of a church graveyard.

### ***Statement of Significance***

This Anglican cemetery was an important part of the development of George's Plains village and an integral part of the Church yard, commencing in 1867.

It contains monuments to some notable pastoralists including members of the Cox, Stewart, Smith and Peacock families and many immigrants or descendants of England.

There is a fair to good range of quality monuments in design and style, providing a good technical resource on stone masonry, with around 25 stele from the 19<sup>th</sup> century.

The setting is of special significance being visually screened by perimeter plants, set on a easterly facing slope and within the church yard of a church designed by architect Edward Gell, St. Johns Anglican church, which is a relatively rare cemetery for Council to own.

The cemetery is a good example of church graveyard.

### **Level Of Significance**

This cemetery is of Local significance.

### **State Heritage Inventory (SHI form)**

A SHI form is available from Bathurst Regional Council.

### **Community feedback**

Before completing the assessment, community or descendant feedback on the initial work undertaken should be obtained.

## INVENTORY 1

Inventory of burials and memorials. Recorded by B. Hickson 23<sup>rd</sup> November 2007.

Name	First Names	Date of death	Age	Denomination	Cemetery No.	Additional Inscription	Description	Condition
MACKANDER	James	19.01.1876	19	Anglican		In Loving Memory of <b>MACKANDER</b> James d.19.01.1896 aged 19yrs. Verse: 'Those whom god loves, die young'.	An isolated grave with a gable top marble monument with a sandstone base.	Good
CASE	Andrew Benjamin	14.08.1912	27			In Loving Memory of <b>CASE</b> Andrew Benjamin who departed 14.08.1912 aged 27yrs. Verse: 'Peace Perfect Peace'.	Up the hill is a marble monument within a wrought iron single bed. The top of the monument is gothic with peaked shoulders.	Good But loss of letters
WEST	Isaiah (Ned)  Daisy Naomi	14.05.1939  28.12.1947	74  78			In Loving Memory of <b>WEST</b> Isaiah (Ned) who departed this life 14.05.1939 aged 74yrs. And Our dear mother <b>WEST</b> Daisy Naomi who departed this life 28.12.1947 aged 78yrs. Verse: 'Let not your heart be troubled'.	Double bed masonry surround, collapsed top ledger and up-stand at end. Contains a marble 'book of life' monument. Two name plates 'Grandad & Granma'.	Poor, collapsed ledger and stained
FARDELL	George  Letitia Ann  Mary	24.11.1929  29.09.1933  11.12.1940	79  80  42			<b>FARDELL</b> George d. 24.11.1929 aged 79 yrs. <b>FARDELL</b> Letitia Ann d.29.09.1933 aged 80yrs <b>FARDELL</b> Mary d. 11.12.1940 aged 42yrs.	Double bed masonry surround and a terrazzo ledger and up-stand containing the marble monument. Ledgers that were reinforced have completely broken away.	Poor, collapsed ledger
HICKS	Charles  Margaret  Robert	10.12.1929  11.12.1956  31.01.1971	62  86  68			In Loving Memory of <b>HICKS</b> Charles d. 10.12.1929 aged 62yrs. <b>HICKS</b> Margaret d. 11.12.1956 aged 86yrs. <b>HICKS</b> Robert d. 31.01.1971 aged 68yrs.	A triple bed with an up-stand and marble plaque the up-stand and ledgers of the three beds are in terrazzo.	Good

## Conservation Management Plan for Georges Plains Cemetery

HILL	Robert Green  Olive Maud	30.03.1947  30.01.1971	62  75			<b>HILL</b> Robert Green d. 30.03.1947 aged 62 yrs. And our dear mother <b>HILL</b> Olive Maud d. 30.01.1971 aged 75yrs.	Single bed with masonry surround and up-stand granite plaque which reads: In Loving memory of my dear husband and our father.	Good
HALEY	Christine Ann	29.03.1955	2h			<b>HALEY</b> Christine Ann d. 29.03.1955 aged 2 hours.	A tiny (infant grave). White painted masonry surround and up-stand and a marble plaque.	Good
BUCKMAN	Gordon Joseph	07.04.1934	15			<b>BUCKMAN</b> Gordon Joseph. d. 07.02.1934 aged 15yrs.	A group of four matching similar single beds each with masonry surrounds and tiled ledgers. At the back is a marble up-stand and plaque to each.	Good Some stains
BESTWICK	Maria	24.10.1932	52			And my dear wife <b>BESTWICK</b> Maria d.24.10.1932 aged 52yrs.		As above
BESTWICK	Henry	02.05.1939	80			<b>BESTWICK</b> Henry d.02.05.1939 aged 80yrs.		As above
TURNBALL	James Henry  Mary Beatrice	19.11.1926  19.07.1967	33  71			<b>TURNBALL</b> James Henry d.19.11.1926 aged 33yrs. Added to this one is <b>TURNBALL</b> Mary Beatrice d.19.07.1967 aged 71yrs.	By Cam Reed.	As above
FRANKLIN  THURGOOD	Edna Ellen  Esma	23.07.1930  17.06.06	16			In Loving Memory of our dear daughter and loving sister <b>FRANKLIN</b> Edna Ellen d.23.07.1930 aged 16yrs. Added to this is a timber wooden cross with <b>THURGOOD</b> Esma d.17.06.06 At Rest NB presumably 2006.	A single bed wide bed perhaps 2 burials. With a masonry up-stand and marble plaque.	Good
VANE	Donald	06.04.1960	84			<b>VANE</b> Donald d.06.04.1960 aged 84 yrs.	Within a group of five similar masonry surrounds and masonry up-stand. Each topped with loose gravel. Four of them have marble plaques and one has polished granite.	Good

# Conservation Management Plan for Georges Plains Cemetery

LOCKHART	Evelyn	14.05.1949	75			<b>LOCKHART</b> Evelyn who departed this life 14.05.1949 aged 75yrs.	As above	Good
LOCKHART	Robert Thomas	28.10.1927	63			<b>LOCKHART</b> Robert Thomas who departed this life 28.10.1927 aged 63yrs. Beloved husband of Evelyn; Father of Leslie and Pita.	As above	Good
MACQUEEN	Jane	----	78			<b>MACQUEEN</b> Jane erected by her loving family – At Rest. At the top is a small metal plaque	A granite one and difficult to read:	Poor, collapsed ledger
FITZGERALD	Walter D J  Selina	03.03.1982  04.08.1920	  43			<b>MACQUEEN</b> Walter D J 04.06.1912 to 03.03.1982 In Loving Memory of my dear wife <b>FITZGERALD</b> Selina d.04.08.1920 aged 43yrs.	A marble plaque again which has fallen from its resting place in Loving Memory of my dear wife <b>FITZGERALD</b>	
HICKS	Henry  Anne  Isabella	25.09.1933  14.04.1918  15.05.1914	75  63  22			<b>HICKS</b> Henry who d.25.09.1933 aged 75yrs. <b>HICKS</b> Anne/Annie who d. 14.04.1918 aged 63yrs. <b>HICKS</b> Isabella who d.15.05.1914 aged 22y rs.	A family plot to the name of Hicks containing three marble plaques on masonry up- stands set in a white marble gravel with metal fence.	Good
DREW	George Ellen Florence	01.08.1943 07.06.1941 22.06.1943	90 84 36			<b>DREW</b> George d. 01.08.1943 aged 90yrs. <b>DREW</b> Ellen d. 07.06.1941 aged 84yrs. 'mother'. <b>TAIT</b> Edith Annie d.12.04.1914 aged 36yrs. <b>DREW</b> Florence May d.22.06.1943 aged 56yrs.	A set of three beds each with masonry base and surround terrazzo ledger and masonry up- stand and marble plaque at the end. One ledger has broken up severely at the base.	Tait ledger has collapsed.
CHENEY	Rachel April  Jane	1892  15.06.1899	13  55			<b>CHENEY</b> Rachel April.1892 aged 13yrs & 6mths - also <b>CHENEY</b> Jane d. 15.06.1899 aged 55yrs.	A double bed with masonry surround, ledger tiled surface and elaborate up-stand containing a marble plaque.	Fair, some staining.

# Conservation Management Plan for Georges Plains Cemetery

CHENEY	William Mary	18.12.1886 28.09.1903	64 78			Sacred to the Memory of <b>CHENEY</b> William d. 18.12.1886 aged 64yrs. Verse: 'In the mist of life we are in death'. Also <b>CHENEY</b> Mary d. 28.09.1903 aged 78yrs. -beloved wife of the above. Verse: 'He give'th his beloved sleep'.	A double bed surround with wrought iron. No ledger as it appears a thin masonry topping has since broken away and a large marble up-standing monument that has been fallen and re-stood. Semicircular top with shaped and cut away shoulders.	Poor. Broken away ledger
CHENEY	John	22.06.1927	69			<b>CHENEY</b> John d. 22.06.1927 aged 69yrs. Verse: 'Resting in the Lord'.	Next is a masonry surround and tiled ledger and up-stand all in marble with side vases and a plaque.	Good
CHENEY	George	09.06.1926	83			<b>CHENEY</b> George d. 09.06.1926 aged 83yrs. -At Rest.	A single bed with masonry surround and tiled top ledger. A marble sign and the end 'father'. Masonry up-stand at the other end contains a marble plaque.	Fair, some lichen
HOBBS	William Mary John	09.07.1921 21.12.1884 26.02.1912	88 43 42			In Loving Memory of <b>HOBBS</b> William d.09.07.1921 aged 88yrs. Also our dear mother <b>HOBBS</b> Mary passed away 21.12.1884 aged 43yrs. Our dear brother <b>HOBBS</b> John passed away 26.02.1912 aged 42yrs. At Rest.	A double bed with a stone surround has broken away top ledger an up-stand in stone with a marble plaque, with a little marble piece at the top.	Fair
LOUDON	Jane	08.01.1918	74			To our dear mother <b>LOUDON</b> Jane who passed away 08.01.1918 aged 74yrs. Verse: 'Our loved one at Rest'.	A single bed stone surround and masonry ledger a brick up-stand that was once rendered marble plaque. Shows workmanship involved in making these monuments. Sandstone and brickwork underneath the render.	Poor - with severe staining.
HUNTER	John Mary Ann	13.09.1921 29.06.1930	79 84			<b>HUNTER</b> John d. 13.09.1921 aged 79yrs. <b>HUNTER</b> Mary Ann d.29.06.1930 aged 84yrs.	A pair of single beds with masonry surround and up- stands and with marble plaques.	Fair



# Conservation Management Plan for Georges Plains Cemetery

HUNTER	Mary J Edgar F F	28.07.1933 06.10.1940	55 69			In Loving Memory of <b>HUNTER</b> Mary J d.28.07.1933 aged 55yrs. <b>HUNTER</b> Edgar F.F d. 06.10.1940 aged 69yrs. At Rest.	A pair of single beds with masonry surround and up-stands and with marble plaques.	Good
HICKS	William	01.01.1923	62			In Loving Memory of <b>HICKS</b> William d.01.01.1923 aged 62yrs. – At Rest.	A single bed with a masonry surround and natural earth ledger and at the end a low up- stand in masonry with a marble plaque.	Good
GODDEN	Leslie Max	21.10.1929	6m			It reads in Loving Memory of our dear son and brother <b>GODDEN</b> Leslie Max d. 21.10.1929 aged 6 mths. Verse: 'Jesus called a little child'.	A single child grave plot masonry surround with marble plaque across the top and a marble angel at one end, other parts with broken masonry and other broken angels.	Poor, broken masonry.
GODDEN	Charles Henry  Evelyn Maud	03.03.1954  10.09.1980	69  93			<b>GODDEN</b> Charles Henry d.03.03.1954 aged 69yrs. And on top of the ledger which has been renewed In Loving Memory of <b>GODDEN</b> Evelyn Maud d.10.09.1980 aged 93yrs.	A single bed masonry surround with an up stand to one end a marble plaque.	Good
PEACOCK	Robert W	14.12.1946	77			<b>PEACOCK</b> Robert W d.14.12.1946 aged 77yrs – At Rest.	A double bed with flat monument in marble on top of terrazzo ledger.	Good Repaired.
PEACOCK	Robert  Isabella	27.04.1899  31.08.1919	61  84			<b>PEACOCK</b> Robert who departed 27.04.1899 aged 61yrs. Also wife of the above <b>PEACOCK</b> Isabella who entered into rest 31.08.1919 aged 84yrs.	Paired with the above grave.  Verse: 'Until the day breaks'.	As above
QUINCE	John Edward	14.09.1940	76			<b>QUINCE</b> John Edward d.14.09.1940 aged 76yrs. Stone erected by his wife and family. At Rest.	Then a single bed surround with a masonry up-stand and marble plaque. This headstone is losing some of its lead lettering.	Fair Loss of letters

# Conservation Management Plan for Georges Plains Cemetery

DOWLING	Edward	16.07.1948				<b>DOWLING</b> Edward d.16.07.1948.	A single bed with masonry surround, natural earth ledger and up-stand at one end and a marble plaque.	Good
PRATLEY	Herbert	23.09.1970	75			In Loving Memory of our dear father: <b>PRATLEY</b> Herbert who d.23.09.1970 aged 75yrs.	A masonry surround with terrazzo top and vase at foot and an up-stand, marble plaque.	Poor repair ledger
SWEETNAM	Claire A	15.05.1933	40			In memory of: <b>SWEETNAM</b> Claire A. who passed away (date difficult to read)15.05.1933 aged 40yrs. Erected by her loving husband and son John.	A masonry surround with the words 'mother' embossed in masonry at the base an up-stand in polished red granite with some lichen covering edges.	Fair Some lichen
JACOBS	Hannah	30.10.1905	75			Sacred to the Memory of <b>JACOBS</b> Hannah who d. 30.10.1905 aged 75yrs.	A single up-standing circular summit with round shoulders, marble monument on a masonry base.	Good but loss of letters
SLADER	Sarah Edwin	1308.1902 28.04.1910	58 80			In Loving remembrance of Sarah, Dearly beloved wife of Edwin SLADER d. 13.08.1902 aged 58yrs. Verse: 'Abide with me fast falls the even tide the darkness deepens Lord with me abide when others help has failed and comfort flees, help of the helpless abide with me'. Also <b>SLADER</b> Edwin d. 28.04.1910 aged 80yrs.	A marble up-standing semi circular stele on a masonry base, double bed with wrought iron surround. Memorial by J. Burns.  Verse: 'Swift to its close ebb's out life's little day, earths joys grow dim its glories pass away, chance and decay in all around I see, thou who changest not, abide with me'.	Good
PEACOCK	George Willis	14.07.1933	64			In Loving Memory of <b>PEACOCK</b> George Willis d.14.07.1933 aged 64yrs	A single bed masonry surround with the words embossed 'At Rest' and an up-stand on masonry base with a marble plaque.	Fair Some stains
DAVIDSON	Thomas Harold T Edgar R	11.12.1901 25.03.1904 10.01.1909	61 2 7m			My dear husband <b>DAVIDSON</b> Thomas d.11.12.1901aged 61yrs.Verse: 'Peace Perfect Peace' Also <b>DAVIDSON</b> Harold	A single marble up-stand, semicircular shaped top with cut away shoulders, on a masonry base. J. Burns Memorial.	Fair Some stains

# Conservation Management Plan for Georges Plains Cemetery

						T d.25.03.1904 02 & 9mths <b>DAVIDSON</b> Edgar R d.10.01.1909 aged 7 mths – At Rest.		
PEACOCK	William Rebecca	18.08.1875 09.10.1896	89 84			In Memory of <b>PEACOCK</b> William d. 18.08.1875 aged 89yrs. h/Rebecca Verse: Difficult to read. Also his Beloved wife <b>PEACOCK</b> Rebecca d.09.10.1896 aged 84yrs. -w/William Verse: 'I know my redeemer liveth'.	A sandstone semi circular in fine sandstone. Monument in an attractive and primitive wrought iron surround double bed.	Fair, refix to standing position.
DREW	Rebecca	22.05.1929	80			<b>DREW</b> Rebecca b.12.01.1849 d.22.05.1929.At Rest.	Single bed masonry surround with a collapsed top ledger and a marble 'book of life' memorial at one end.	Fair
DREW	John Thomas	24.03.1934	84			<b>DREW</b> John Thomas b.26.08.1849 d.24.03.1934 At Rest.		
WINNIE	Winnie					A small child's grave with a marble cross just bearing the word, 'Winnie' surrounded by wrought iron fence.		Good
BUTLER	James W	16.02.1894	24			In Loving Memory of <b>BUTLER</b> James W d. 16.02.1894 aged 24yrs. Verse: 'Alone we will thank God to the grave is forgiven for we know their soul the better part is safe in heaven'.	An up-standing marble cross surmounted on a stepped pediment all in marble masonry surround and ledger.	Fair Some stains
COX	Henry John	09.03.1896	38			In Loving Memory of <b>COX</b> Henry John d. 09.03.1896 aged 38 yrs. Verse: 'He is not dead but sleeping'.	A marble up-standing semi circular with engraved cross and rope carved edge, monument with a wrought iron two bed surround. Memorial by J. Burns.	Good
PRATLEY	James Barzillia Mary	29.01.1950 12.12.1940	85 71			<b>PRATLEY</b> James also Barzillia Mary <b>PRATLEY</b> . d. 1940 these words are the only legible words.	A pair of terrazzo topped and headed polished terrazzo twin bed and virtually illegible.	Good but illegible

# Conservation Management Plan for Georges Plains Cemetery

PRATLEY	Catherine  Robert	31.07.1930  09.08.1899	87  62			<b>PRATLEY</b> Catherine who d.31.07.1930 aged 87yrs.w/Robert. And part of the same monument In Loving Memory of <b>PRATLEY</b> Robert who d. 09.08.1899 aged 62yrs - h/Catherine.	An up-standing large marble monument with a draped urn on the top. This is in a two bed family plot with wrought iron surround.	Good Some stains
SAPPEY	August  John  Elizabeth	30.05.1898  01.03.1910  11.03.1918	68  27  73			<b>SAPPEY</b> August d. 30.05.1898 aged 68yrs. Verse: 'After patient suffering'. <b>SAPPEY</b> John d.01.03.1910 aged 27yrs -At Sydney. Interred at Rookwood. 4 <sup>th</sup> son of August. <b>SAPPEY</b> Elizabeth d.11.03.1918 aged 73yrs. -Wife & Mother of the above.	An up-stand monument, wrought iron surround in double bed.	Fair Some letter loss
CALLAGHAN	Jane  Phillip G	24.10.1933  25.08.1941	73  83			<b>CALLAGHAN</b> Jane d.24.10.1933 aged 73yrs. 'Footstone Mother' <b>CALLAGHAN</b> Phillip G. d..25.08.1941 aged 83yrs.	Masonry surround with a masonry up-stand and a polished red granite plaque- difficult to read.	Good
DOWLING	Annie	18.06.1902	57			<b>DOWLING</b> Annie d.18.06.1902 aged 57yrs. Verse: 'Her end was Peace'. Also <b>DOWLING</b> William d.16.12.1912 aged 69yrs – At Rest.	A tall polished black granite monument with a column on top, surmounted by an urn. This monument is in a double bed surround with wrought iron railings.	Very good
HILL	George William	09.05.1899	45			Records indicate the following. <b>HILL</b> George William d. 09.05.1899 aged 45yrs. There is a verse that is hard to read starts with 'It's hard to break the tender...'. <b>HILL</b> Francis Bernard d.14.01.1890 aged 4yrs & 4 mths.	A broken marble headstone in three pieces two pieces placed on masonry base, the top of the headstone rounded. The lead lettering absent. Unable to read description – noting only surname.	Poor Not repairable
HILL	Francis Bernard	14.01.1890	4				A single marble up-stand with gothic shaped top, with shoulders, on a masonry base,	Good

# Conservation Management Plan for Georges Plains Cemetery

							surrounded by a wrought iron fence. The headstone and fence well maintained.	
PEARCE	Chas Gregory  Henry  John H	No date  No date  No date				<b>PEARCE</b> Chas Gregory ‘My brother’, also our children -Henry & John H Pearce. <b>PEARCE</b> Henry <b>PEARCE</b> John H.	A single up-standing sandstone headstone semicircular with cut away shoulders, painted white on a masonry base.	Good but loss of lead
WILLIAMS	Eliza	16.03.1881	35			Sacred to the memory of: <b>WILLIAMS</b> Eliza d. 16.03.1881 aged 35yrs.	A single upstanding sandstone headstone cruciform shape. A rendered masonry ledger and edging. Words are engraved around the cross shape. There are additional words engraved on the ledger. Inscription carved in the top edging.	Fair
HOCKEY	Mary  Henry	14.01.1892  26.02.1899	73  76			<b>HOCKEY</b> Mary b. 30.03.1818 d. 14.01.1892 <b>HOCKEY</b> Henry d. 26.02.1899 aged 76yrs. h/Mary.	A single up-stand gravestone with gothic top, white marble amongst a collapsed wrought iron fence work the grave area covered in white loose gravel.	Good stele, collapsed iron fence
HURST	Isabella  William  James	12.07.1909  27.03.1915  08.10.1899	70  80  56			<b>HURST</b> Isabella d. 12.07.1909 aged 70yrs. w/William <b>HURST</b> William d. 27.03.1915 aged 80yrs. <b>HURST</b> James d. 08.10.1899 aged 56yrs.	Very large red granite monument of central square pillar on stepped base and surmounted with draped urn.	Good
SMITH	Joseph	01.10.1879	63			<b>SMITH</b> Joseph d.01.10.1879 aged 63yrs. – (of Mildura).	Solid rectangular polished grey granite monument on stepped base and pediment over.	Good
BOOTH	Louisa  Job  Job	07.08.1893  19.12.1891  25.10.1903	79  36  89			<b>BOOTH</b> Louisa d.07.08.1893 aged 79yrs. <b>BOOTH</b> Job d.19.12.1891 aged 36 yrs. <b>BOOTH</b> Job d. 25.10.1903 aged 89yrs.	A polished red granite stele with gothic peak. Monument by J. Burns.	Good

# Conservation Management Plan for Georges Plains Cemetery

STEWART	William Jane	15.10.1868 26.08.1883	63 76			<b>STEWART</b> William d. 15.10.1868 aged 63yrs.h/Jane <b>STEWART</b> Jane d.26.08.1883 aged 76yrs.	An exceptionally fine monument in sandstone with semi circular top with peaked shoulders, carved with draped urn and the inscription.	Good
BOOTH	Lucy Nathanial	15.04.1951 31.12.1929	100 80			Book of Life <b>BOOTH</b> Lucy d. 15.04.1951 aged 100yrs. <b>BOOTH</b> Nathanial d.31.12.1929 aged 80yrs.	Double bed with masonry surround and upstand. Fallen – ‘Book of Life’ marble monument. Re-fix the ‘Book’.	Poor Fallen - fix
JARVIS MUNRO	Margaret Isabella Thomas	17.02.1877 10.06.1877	3 71			<b>JARVIS</b> Margaret Isabella d. 17.02.1877 03yrs & 1 mth with Thomas <b>MUNRO</b> . <b>MUNRO</b> Thomas d. 10.06.1877 aged 71yrs. Footstone M.I.J.1877 T.M. 1877	A single sandstone up- stand with semi circular top, and becoming illegible.	Fair
BARNES	Mary James	02.08.1927 31.07.1936				<b>BARNES</b> Mary d.02.08.1927 aged 82yrs. – At Rest. <b>BARNES</b> James d.31.07.1936 aged 85 yrs. – At Rest.	Masonry surround and up-stand supporting a marble ‘Book of Life’.	Fair
BARNES	Mary James Catherine Jane Kenneth	02.08.1927 31.07.1936 05.01.1890 10.10.1888	82 85 36 10 m			<b>BARNES</b> Mary d. 02.08.1927 aged 82yrs. <b>BARNES</b> James d.31.07.1936 aged 85yrs. <b>BARNES</b> Catherine Jane d. 05.01.1890 aged 36yrs.w/Henry <b>BARNES</b> Kenneth d.10.10.1888 aged 10 mths. child of above.	A remarkable headstone. A tall pillar on triple stepped base, surmounted by an angel figurine.	Fair some stains
BRYANT	Cecil John	06.10.1937	19			Marble plaque to: In Loving Memory of our dear son <b>BRYANT</b> Cecil John d. 06.10.1937 aged 19yrs. ‘Jack’ on small footstone.	Marble plaque on masonry up-stand, masonry bed surround and gravel ledger.	Fair Needs weed maintenance
KELLY	John Edward	02.09.1902	64			In Loving Memory of <b>KELLY</b> John Edward d.02.09.1902 aged 64yrs. At Rest.	Masonry surround and small marble plaque at end.	Fair
KNIGHT	Rose Althea (Agatha)	01.09.1956	79			In Loving Memory of <b>KNIGHT</b> Rose Althea d.01.09.1956	A single bed with masonry surround and up-stand at one end and	Fair Needs weed maintenance



## Conservation Management Plan for Georges Plains Cemetery

						aged 79yrs.	a marble plaque.	
BARRETT	William	12.10.1886	72			<b>BARRETT</b> William d. 12.10.1886 aged 72yrs.	A fallen marble headstone laying on masonry base which is cracked and masonry rendered ledger also cracked. Unable to determine details of burial on monument.	Broken Unable to be re-paired
DOWLING	John  Ruth	09.11.1937  25.05.1954	-  -			<b>DOWLING</b> John & Ruth	Masonry surround and polished red granite up- stand in the form of an alter.	Good

## INVENTORY 2

### Compilation of known information on burials.

#### Georges Plains Cemetery

NAME	FIRST NAME(s)	D. of D.	AGE	DENOM.	CEM. NO.	INSCRIP.	AD. INFO
BARNES	Mary	02.08.1927	82			née Hockey; w/James; mother	
BARNES	James	31.07.1936	85			s/Jacob & Elizabeth; h/Mary; father	
BARNES	Catherine Jane	05.01.1890	36			née Sweetnam; w/Henry; mother	
BARNES	Kenneth	10.10.1888	06 mths			son/Henry & Catherine Jane; child of above	
BARRETT	William	12.10.1886	72			son/Adam & Sarah; died at Limestone Pansony.	
BESTWICK	Henry	02.05.1939	80			son/William; h/Clara E (née Whiteman) & Maria; father	
BESTWICK	Maria	24.10.1932	52			née Kelly; w/Henry; mother	
BOOTH	Job	25.10.1903	89 & 6mths			son/Charles; h/Louisa; father	
BOOTH	Louisa	07.08.1893	79 & 8mths			w/Job; mother	
BOOTH	Job	19.12.1891	36			son/Job & Louisa	
BOOTH	Lucy	15.04.1951	100			née Cox; w/Nathaniel; mother	
BOOTH	Nathaniel	31.12.1929	80			son/Job & Louisa; h/Lucy; father	
BRYANT	Cecil John	06.10.1937	19			son/Frank Cecil & Ethel Rose	
BUCKMAN	Gordon Joseph	07.04.1934	15			son/Henry & Nellie	
BUTLER	James W	16.02.1894	24			son/James W	
CALLAGHAN	Jane	24.10.1933	73			'Footstone Mother'; née Peacock; w/Phillip George; mother	
CALLAGHAN	Phillip G	25.08.1941	83			son/Anna; h/Jane; father	
CASE	Andrew Benjamin	14.08.1912	27			son/Andrew & Charlotte	
CHENEY	John	22.06.1927	69			son/William & Mary; no image	
CHENEY	William	18.12.1886	64			h/Mary; father; no image	
CHENEY	Mary	28.09.1903	79			w/William; mother; no image	
CHENEY	George	09.06.1926	83			'Our dear Father'; son/William & Mary; h/Jane; father; no image	
CHENEY	Rachel	April.1892	13 & 8mths			dau/George & Jane; no image	
CHENEY	Jane	15.06.1899	55			née Drew; w/George; mother; no image	
COX	Henry John	09.03.1896	68 (38) <sup>3</sup>			not found on BDM index	
DAVIDSON	Thomas	11.12.1901	61			h/Ann E; father; gf	
DAVIDSON	Harold T	25.03.1904	02 & 9mths			son/Josiah & Susan	
DAVIDSON	Edgar R	10.01.1909	07 mths			son/Josiah & Susan	
DOWLING	Edward	16.07.1948				son/William & Annie	
DOWLING	John	09.11.1937				h/Ruth; father	
DOWLING	Ruth	25.05.1954				w/John; mother	
DOWLING	Annie	18.06.1902	57			w/William; mother	
DOWLING	William	16.12.1912	69			son/Edward & Elizabeth; h/Annie; father	
DREW	Florence May	22.06.1943	56			with Edith Tait; dau/George & Ellen Drew; no image	
DREW	Ellen	07.06.1941	84			née Norbury; w/George; mother; no image	
DREW	George	01.08.1943	90			son/John; h/Ellen; father; no image	
DREW	Rebecca	22.05.1929	80			dob. 12.01.1849; née Peacock; w/John Thomas	
DREW	John Thomas	24.03.1934	85			dob. 26.08.1849; son/John & Ann; h/Rebecca	
FARDELL	George	24.11.1929	79			son/Thomas & Jane; h/Lettitia Ann; father	
FARDELL	Letitia Ann	29.09.1933	80			née Cheney; w/George; mother	
FARDELL	Mary Letitia	11.12.1940	42			dau/George & Letitia Ann	
FITZGERALD	Selina	04.08.1920	43			née Kelly; w/Reuben M; mother; Stone erected by her husband.	
FORBES	Hannah (Honor <sup>4</sup> )	30.10.1905	75			not found on BDM index; no image	
FRANKLIN	Edna Ellen	23.07.1930	16			dau/Raymond A & Grace; sister; s/w Esma Thurgood	
GODDEN	Charles Henry	03.03.1954	69			h/Evelyn Maud; father	
GODDEN	Evelyn Maud	10.09.1980	93			née Balfour; w/Charles Henry; mother	
GODDEN	Leslie Max	21.10.1929	06 mths			'Our Son and Brother'; son/Charles Henry & Evelyn Maud; brother	
HALEY	Christine Ann	29.03.1955	02 hrs			dau/Atthol Oliver & Frances Mary	
HICKS	Charles	10.12.1929	62			son/Anthony & Mary A; h/Margaret; father	
HICKS	Margaret	11.12.1956	86			dau/David; w/Charles; mother	
HICKS	Robert	31.01.1971	68			son/Charles & Margaret	
HICKS	Isabella	15.05.1914	22			dau/Henry & Annie Hicks	
HICKS	Annie	14.04.1918	63			née MacKay; w/Henry; mother	
HICKS	Henry	25.09.1933	75			son/Anthony & Mary A	
HICKS	William	01.01.1923	62			son/Anthony & Mary A	
HILL	(George) <sup>5</sup> William	09.05.1899	45			son/John & Teresa	
HILL	Francis Bernard	14.01.1890	04 & 4 mths <sup>6</sup>			son/Joseph & Julia A	

<sup>3</sup> 1965 list by Mr and Mrs Eric Campbell, and is not on the BDM records.

<sup>4</sup> 1965 list by Mr and Mrs Eric Campbell.

<sup>5</sup> ibid

# Conservation Management Plan for Georges Plains Cemetery

<b>HILL</b>	Robert Green	30.03.1947	62	son/Amos & Charlotte; h/Olive Maud; father
<b>HILL</b>	Olive Maud	30.01.1971	75	née Fell; w/Robert Green; mother
<b>HOBBS</b>	William	09.07.1921	88	h/Mary; father
<b>HOBBS</b>	Mary	21.12.1884	43	w/William; mother
<b>HOBBS</b>	John Edward	26.02.1912	42	son/William & Mary; brother
<b>HOCKEY</b>	Mary	14.01.1892	74	dob. 30.03.1818; dau/James; w/Henry; mother
<b>HOCKEY</b>	Henry	26.02.1899	76	h/Mary; father; d. Rockley Farm
<b>HUNTER</b>	Mary J	28.07.1933	55	née McLeay; w/Edgar F F
<b>HUNTER</b>	Edgar F.F	06.10.1940	69	son/John & Mary Ann; h/Mary J
<b>HUNTER</b>	John	13.09.1921	79	son/John & Mary; h/Mary Ann; father
<b>HUNTER</b>	Mary Ann	29.06.1930	84	née Freeman; w/John; mother
<b>HURST</b>	Isabella	12.07.1909	70	née Hood; w/William
<b>HURST</b>	William	27.03.1915	80	son/George & Sarah; h/Isabella
<b>HURST</b>	James	08.10.1899	56	son/George & Sarah
<b>JACOBS</b>	Hannah	30.10.1905	75	dau/George
<b>JARVIS</b>	Margaret Isabella	17.02.1877	3 y & 1 mth b/w Thomas	MUNRO; dau/Stephen & Ann; s/w Thomas Munro
<b>KELLY</b>	John Edward	02.09.1902	64	son/John
<b>KNIGHT</b>	Rose Althea (Agatha) <sup>7</sup>	01.09.1956	79	dau/Walter & unknown
<b>LOCKHART</b>	Robert Thomas	28.10.1927	63	father of Leslie & Rita; son/Robert T & Mary A; h/Evelyne
<b>LOCKHART</b>	Evelyne	14.05.1949	73	née Rolfe; w/Robert Thomas; mother
<b>LOUDON</b>	Jane	08.01.1918	74	Mother
<b>MACKANDAR</b>	James	19.01.1876	19	son/James & Susan; no image
<b>McQUEEN</b>	Jane	no date	78	Stone erected by her Family; née Lockhart; w/Charles; mother
<b>McQUEEN</b>	Walter J D	03.03.1982	70	b. 04.06.1912; son/Charles & Jane
<b>MUNRO</b>	Thomas	10.06.1877	71	Footstone=M.I.J.1877 T.M. 1877; son/James & Isabella; s/w Margaret Isabella Jarvis
<b>MYERS</b>	Aileen Bonny	26.07.2002	81	(not listed in previous studies); née Godden; w/Cyril Robert; mother
<b>MYERS</b>	Cyril George Clarence	16.03.2006	60	son of the above; son/Cyril Robert & Aileen Bonnie
<b>PEACOCK</b>	George Willis	14.07.1933	64	son/Robert & Isabella; h/Margaret (née Pearce); father
<b>PEACOCK</b>	Robert	27.04.1899	61	son/William & Rebecca; h/Isabella
<b>PEACOCK</b>	Isabella	31.08.1919	84	née Willis; w/Robert; mother
<b>PEACOCK</b>	Robert William	14.12.1946	77	son/Robert & Isabella
<b>PEACOCK</b>	William	18.08.1875	69 (89 <sup>8</sup> )	son/unknown & Hannah; h/Rebecca; father
<b>PEACOCK</b>	Rebecca	09.10.1896	84	dau/Robert & Charlotte; w/William; mother
<b>PEACOCK</b>	Norman H 'Joe'	14.04.1983	91	AIF; 7054 Pte 3 Bn; son/George W & Margaret
<b>PEARCE</b>	Chas Gregory	1873 'My brother', also our children		-Henry & John H Pearce; son/H & M; brother; b. 1871.
<b>PEARCE</b>	Henry	1886		b. 1886; son/John H & Susan
<b>PEARCE</b>	John H.	1900		b. 1896; son/John H & Susan
<b>PRATLEY</b>	Catherine	31.07.1930	87	dau/Michael; w/Robert
<b>PRATLEY</b>	Robert	09.08.1899	62	son/Philip & Mary; h/Catherine
<b>PRATLEY</b>	Barzillia (Barzella) <sup>9</sup> Mary	12.12.1940	71	'Mother at Rest'; dau/Walter & Ellen; w/James; mother
<b>PRATLEY</b>	James	29.01.1950	85	'Father at Rest'; son/Robert & Catherine; h/Barzillia Mary; father
<b>PRATLEY</b>	Herbert	23.09.1970	75	son/James & Barzillia Mary; father
<b>QUINCE</b>	John Edward	14.09.1940	76	Stone erected by his wife and family; son/John & Margaret; husband; father
<b>SAPPEY</b>	August	30.05.1898	68	h/Elizabeth; father
<b>SAPPEY</b>	John	01.03.1910	27	4 <sup>th</sup> son of August; and Elizabeth; d. Sydney; bur. Rookwood
<b>SAPPEY</b>	Elizabeth	11.03.1918	73	née Smith; w/August; mother
<b>SLADER</b>	Sarah	13.08.1902	58	née Revette; w/Edwin; mother
<b>SLADER</b>	Edwin	28.04.1910	80	son/John & Elizabeth; h/Sarah; father
<b>SMITH</b>	Joseph	01.10.1879	63	not found on BDM index
<b>STEWART</b>	William	15.10.1868	63	son/John & Janet; h/Jane
<b>STEWART</b>	Jane	26.08.1883(5)	73(76) <sup>10</sup>	dau/George & Jane; w/William D; s/w Florence Drew; no image
<b>SWEETNAM</b>	Claire A	15.05.1933	40	Stone erected by her husband and son, John; née Veal; w/John P; mother
<b>TAIT</b>	Edith Annie	12.04.1914	36	buried with Florence Drew; née Drew; w/William D
<b>THURGOOD</b>	Esma	17.06.06 – At Rest		née Franklin; s/w Edna Ellen Franklin; marker
<b>TURNBULL</b>	James Henry	19.11.1926	33	son/James H & Mary; h/Mary Beatrice; father
<b>TURNBULL</b>	Mary Beatrice	19.07.1967	71	Footstone (1986); née Bestwick; w/James Henry; mother
<b>VANE</b>	Donald	06.04.1960	84	son/John & Jane
<b>WEST</b>	Daisy Naomi	28.12.1947	78	dau/Job & Sarah Louisa; w/Isaiah; mother; gm
<b>WEST</b>	Isaiah (Ned)	14.05.1939	74	Footstone 'Grandad, Grandma' exists (1986);
<b>WILLIAMS</b>	Eliza	16.03.1881	35 <sup>11</sup> (10.03.1881)	son/Richard; h/Daisy Naomi; father; gf
<b>'WINNIE'</b>				née Dare; w/Frederick Charles
				On a small marble cross with no other wording.

<sup>6</sup> 4 months only, given as age in 1965 list by Mr and Mrs Eric Campbell

<sup>7</sup> 1965 list by Mr and Mrs Eric Campbell

<sup>8</sup> ibid

<sup>9</sup> ibid

<sup>10</sup> ibid

<sup>11</sup> ibid

## Conservation Management Plan for Georges Plains Cemetery

### **Reference:**

- Site visit by B.J. Hickson 23<sup>rd</sup> November 2007. (The listed names in bold were sighted on the site inspection cross checked with the other lists).
- Cemetery Transcriptions, (1997), Blayney Shire Local and Family History Group.
- Tombstone records transcribed by Mr & Mrs Eric Campbell 17<sup>th</sup> May 1965. (Bathurst Family History Group).
- Evans Shire Council Local Government Area – Cemetery Register (South), 2003.

Summary: 121 names (including 6 unsighted 23<sup>rd</sup> November 2007).

\* Details differ between transcripts.

## PHOTOGRAPHIC IMAGES INDEX

(recorded by B. Hickson on 23rd November 2007).

### GEORGES PLAINS CEMETERY

Surname	Page Location
---------	---------------

BARNES	1, 10, 14
BARRETT	16
BESTWICK	7
BOOTH	13, 15
BRYANT	12, 14
BUCKMAN	7
BUTLER	9
CALLAGHAN	10
CASE	4
CHENEY	3, 5
COX	12
DAVIDSON	11
DOWLING	1, 8, 10
DREW	3, 11
FARDELL	4
FITZGERALD	3
FRANKLIN	7
GODDEN	7, 8, 12
HALEY	4
HICKS	3, 6
HILL	4, 13, 14
HOBBS	2
HOCKEY	15
HUNTER	2
HURST	15
JACOBS	8
JARVIS	14
KELLY	13
KNIGHT	11
LOCKHARDT	3
LOUDEN	2
MACKANDER	5
MACQUEEN	3
MEYERS	6
MUNRO	14
PEACOCK	9, 10, 11
PEARCE	16
PRATLEY	1, 11
QUINCE	8

## Conservation Management Plan for Georges Plains Cemetery

SAPPEY	12
SLADER	9
SMITH	15
STEWART	16
SWEETNAM	7
THURGOOD	7
TURNBULL	7
VANE	3
WEST	6
WILLIAMS	16
WINNIE	9

# Conservation Management Plan for Georges Plains Cemetery





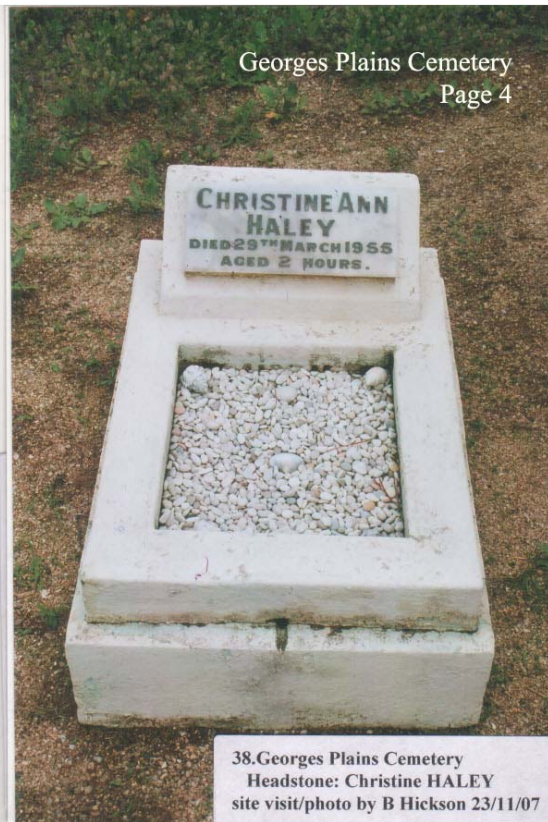








# Conservation Management Plan for Georges Plains Cemetery







44. Georges Plains Cemetery  
Headstone: James MACKANDAR  
photo by B Hickson 23/11/07



Georges Plains Cemetery  
Page 5

34. Georges Plains Cemetery  
Headstone: George CHENEY  
site visit/photo by B Hickson 23/11/07



30. Georges Plains Cemetery  
Headstone: William & Mary CHENEY  
site visit/photo by B Hickson 23/11/07

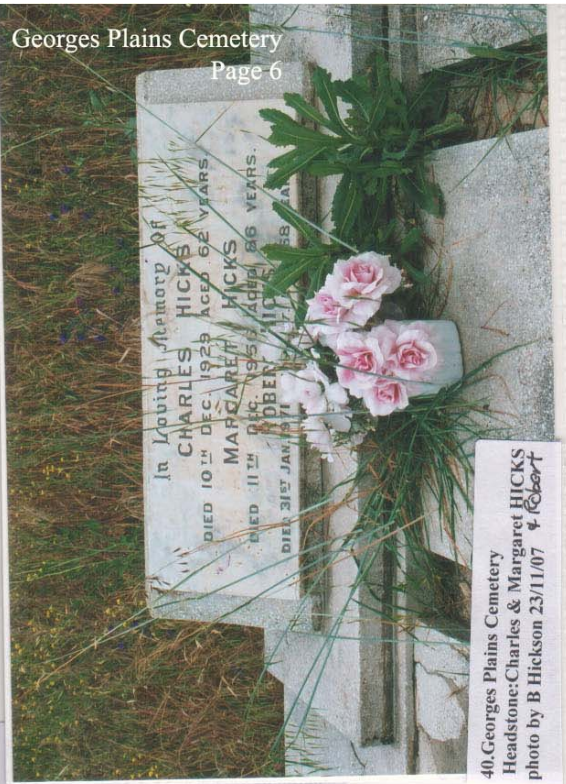


29. Georges Plains Cemetery  
Headstone: John CHENEY  
site visit/photo by B Hickson 23/11/07





42. Georges Plains Cemetery  
Headstone: WEST Isaiah & Daisy  
site visit/photo by B Hickson 23/11/07



40. Georges Plains Cemetery  
Headstone: Charles & Margaret HICKS  
photo by B Hickson 23/11/07



47. Georges Plains Cemetery  
Headstone: William HICKS  
site visit/photo by B Hickson 23/11/07



48. Georges Plains Cemetery  
Headstone: MEYERS A & C  
site visit/photo by B Hickson 23/11/07



# Conservation Management Plan for Georges Plains Cemetery





# Conservation Management Plan for Georges Plains Cemetery





# Conservation Management Plan for Georges Plains Cemetery

Georges Plains Cemetery  
Page 9





# Conservation Management Plan for Georges Plains Cemetery





# Conservation Management Plan for Georges Plains Cemetery





# Conservation Management Plan for Georges Plains Cemetery





# Conservation Management Plan for Georges Plains Cemetery













# Conservation Management Plan for Georges Plains Cemetery

