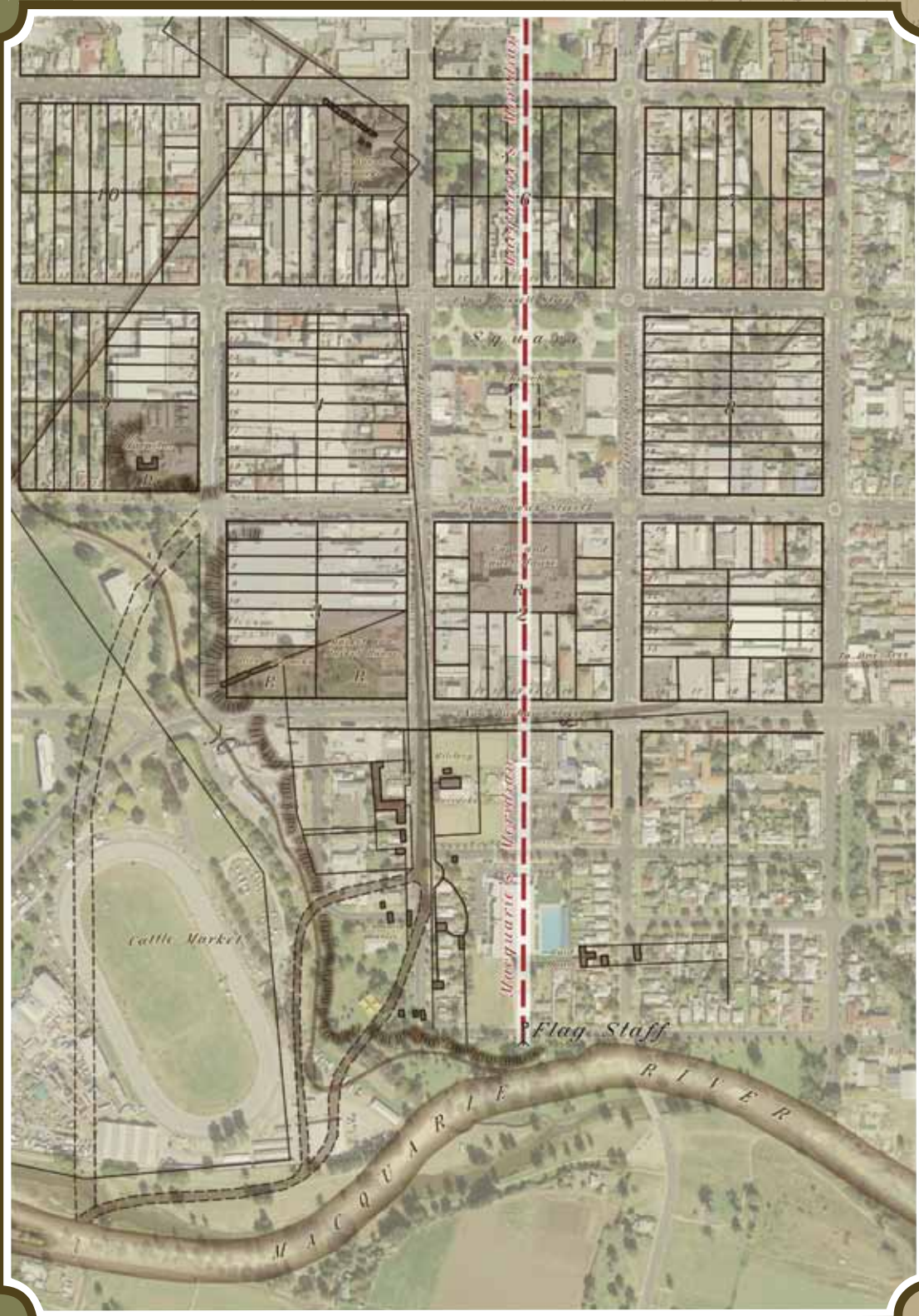


Macquarie's Meridian



The nearby Flag Staff stands alongside a meridian line running through the centre of the earliest part of Bathurst. The line begins at the riverbank site of Governor Macquarie's Flag Staff, now the Bathurst Bicentenary Flag Staff.

It was there, on 7 May 1815, Macquarie announced his plan for a “new intended town on this beautiful spot”. That same day, Macquarie and his senior surveyors set out from the Flag Staff “to lay down and mark out the lines of the town of Bathurst”.



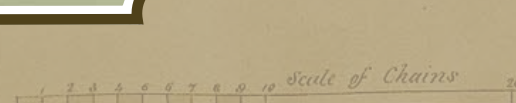
An ideal place...

They would have observed how the land leading towards Wahluu (Mt Panorama) rose gradually to form a long broad ridge, so shaped by ancient flood plain terraces. On both sides the ground sloped gently away, draining storm water into creeks. This was an ideal place to build a town.

The building of Bathurst would not happen during Macquarie's time. However, his choice of town site was not challenged. In 1833, Surveyor-General Thomas Mitchell's new town plan again used Macquarie's Flag Staff as its starting point with a meridian line drawn from there passing exactly through the town's centre. The Bathurst Town Square, together with the Court House (1880) and other heritage sites, are bisected by this line, Macquarie's Meridian.

Modern aerial overlayed with 1833 town plan

Image of Map SR117 (1833) provided courtesy of State Records of NSW,
Portrait of Governor Macquarie courtesy of Mitchell Library, State Library of NSW



BATHURST
REGIONAL COUNCIL

