



BATHURST
AERODROME

INVEST NOW



BATHURST
REGIONAL
COUNCIL

WELCOME FROM **THE MAYOR**

It is with great pleasure that I present the opportunity to invest in Bathurst Aerodrome.

Bathurst Aerodrome is a bustling hive of activity serving around 20,000 passengers annually. The facility is an important asset for the region that easily accommodates major events, tourism, and business opportunities. Bathurst's geographic location makes it the perfect centre to attract regular public and private aircraft services.

Bathurst Aerodrome is well on the way to becoming one of the premier flight facilities in the state.

With assistance from the Federal and State Governments, Council is investing millions of dollars in infrastructure upgrades including construction of a large sealed aircraft parking area, new fencing around the perimeter of the airport, construction of more taxiways and installation of CCTV equipment.

I highly recommend taking this unique opportunity to explore the investment options at Bathurst Aerodrome, which is an integral part of this vibrant region.



Cr Bobby Bourke
Mayor of Bathurst

INVEST NOW



BATHURST
REGIONAL
COUNCIL

BATHURST REGION NOW

Bathurst city and the surrounding region offers new and established businesses a strong and dynamic economic environment to support prosperity and growth.

Over 3,500 businesses call the Bathurst Region home, taking advantage of a wide range of transport options, easy access to metropolitan areas and all the benefits of an attractive, vibrant lifestyle in an engaging, forward thinking community.

A combination of low business costs, a diverse regional workforce, solid infrastructure and a supportive business environment provides the setting needed for business success. The region's proximity to Sydney, strong business networks and transport infrastructure also make Bathurst the ideal growth centre.

LOCATION

Bathurst is located in the central west region of New South Wales, approximately 200 kilometres west of Sydney's central business district and covers an area of 3,818km². The city of Bathurst is a transport axis in regional New South Wales that lies at the end point of the Great Western Highway, the start of the Mid-Western Highway, which links through to Hay, and is on the Mitchell Highway which links through to Orange, Dubbo and onward to Bourke. The Main Western Railway line runs through Bathurst and offers a twice daily commuter service to Sydney and a daily service further west.

PEOPLE

Bathurst Region Local Government Area (LGA) is home to 43,618 people (ERP 2019) and is amongst the fastest growing regional centres in New South Wales. The region is forecast to be the largest population centre in the Central West region by 2036 with an estimated population of 53,360. (NSW Department of Planning)

ECONOMY

Bathurst Regional LGA recorded \$2.27 billion in Gross Regional Product (GRP) in 2019. The Manufacturing sector is the largest contributor to GRP in Bathurst with \$223 million followed by Education and Training \$216 million and Health Care and Social Assistance \$215 million. (economy.id.gov.au/Bathurst)

Bathurst is part of the New South Wales Government's broader Abercrombie Economic Region which also includes the neighbouring Oberon Local Government Area. Oberon contributes \$375 million to Gross Regional Product (2019) with the economy dominated by the manufacturing and agriculture sectors. Manufacturing is Oberon Shire's largest industry in terms of both value-add and employment, with large scale timber processing plants within Oberon Shire sourcing timber from NSW State Forests and private forest growers. The local supply chain associated with the timber industry is well established providing tools, transport and other services and contributing significant employment. (rdacentralwest.org.au)

The Bathurst Region is a significant population growth area within NSW and is supported by a thriving regional economy.

The current facilities and planned expansion of the Bathurst Aerodrome are integral to Bathurst Regional Council's ongoing commitment to building business, tourism and events sectors to support the growing region and driving employment growth into the future.

INVEST NOW

BATHURST REGION NOW



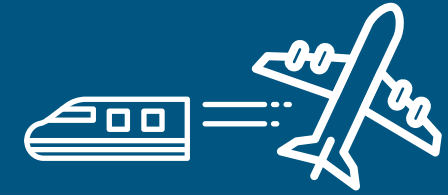
Population:
43,618 ERP 2019



Growth Rate:
Approx. **1.2%** per annum



Distances:
Badgerys Creek **165km**
Bankstown **191km**
Canberra **295km**
Sydney Airport **210km**



Transport:

Air: REX 6 flights a day
Mon-Fri to and from
Sydney and weekend services.
Chartered flights available.

Rail: Two passenger daily
return train services to Sydney.
XPT Service.

Road: Australia Wide
service to and from Sydney.

Intertown: School bus and
taxi services.



Median House Price:
\$437,971 (Hometrack 2018)



Gross Regional
Product:
\$2.27 billion



Business:
3,571 businesses



Employment:
21,115 jobs



Education:
16% with a university qualification
24% with a trade qualification

All statistics noted within this document have been drawn from pre-COVID19 data.

INVEST NOW



BATHURST
REGIONAL
COUNCIL

BATHURST AERODROME **NOW**

First developed in 1935, Bathurst Aerodrome covers over 195 hectares and is serviced daily by Regional Express Airlines, providing regular public transport (RPT) to and from Sydney.

As one of the closest regional airports to Sydney, Bathurst Aerodrome is a popular destination for pilots, particularly trainees, from Bankstown and Camden Aerodromes.

At just over two hours drive from Badgery's Creek, and with a flight time from metropolitan regulated airspace a matter of minutes, the proximity, availability of support facilities, maintenance and refuelling options, along with the enviable natural environment and vibrant regional economy make Bathurst Aerodrome an attractive investment opportunity for aircraft, transport and freight businesses and private leaseholders alike.

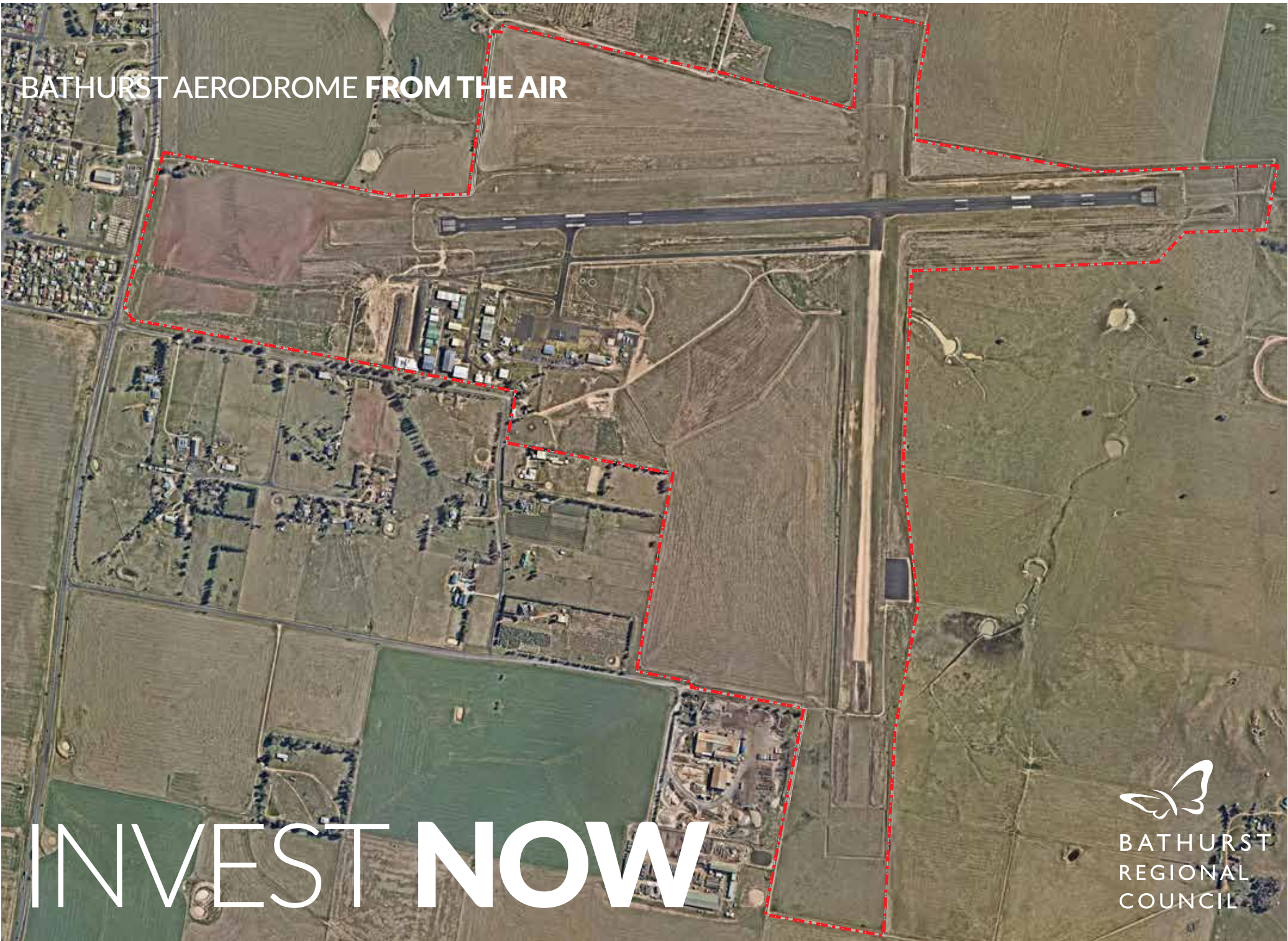
FACILITIES AND SERVICES

- Sealed runway (17/35) 1705m long, 30m wide and is rated at a PCN of 12, with a full reconstruction of the runway pavement completed in February 2015
- Unsealed runway (08/26) 1435m long, 30m wide, limited to 5700 kgs
- Sealed taxiways, aprons, aircraft parking areas
- Grass runway 800m, used for glider traffic
- Two AVGAS and one AVTUR fuel suppliers onsite
- Modern terminal building with adjacent sealed car park and access roads, and parking for RPT aircraft
- Aircraft maintenance facilities onsite
- Pilot activated lighting facilities across sealed runway, taxiways, apron and aircraft parking areas
- Infrastructure to cater for local commercial and recreational aviation support industry
- Windsocks, airstrip markers
- Leasable hangar spaces:
 - a mix of developed and undeveloped, with services (sewer, water, electricity, sealed taxiways); and
 - open spaces with development potential



INVEST NOW

BATHURST AERODROME FROM THE AIR



INVEST NOW

BATHURST AERODROME KEY OPPORTUNITIES

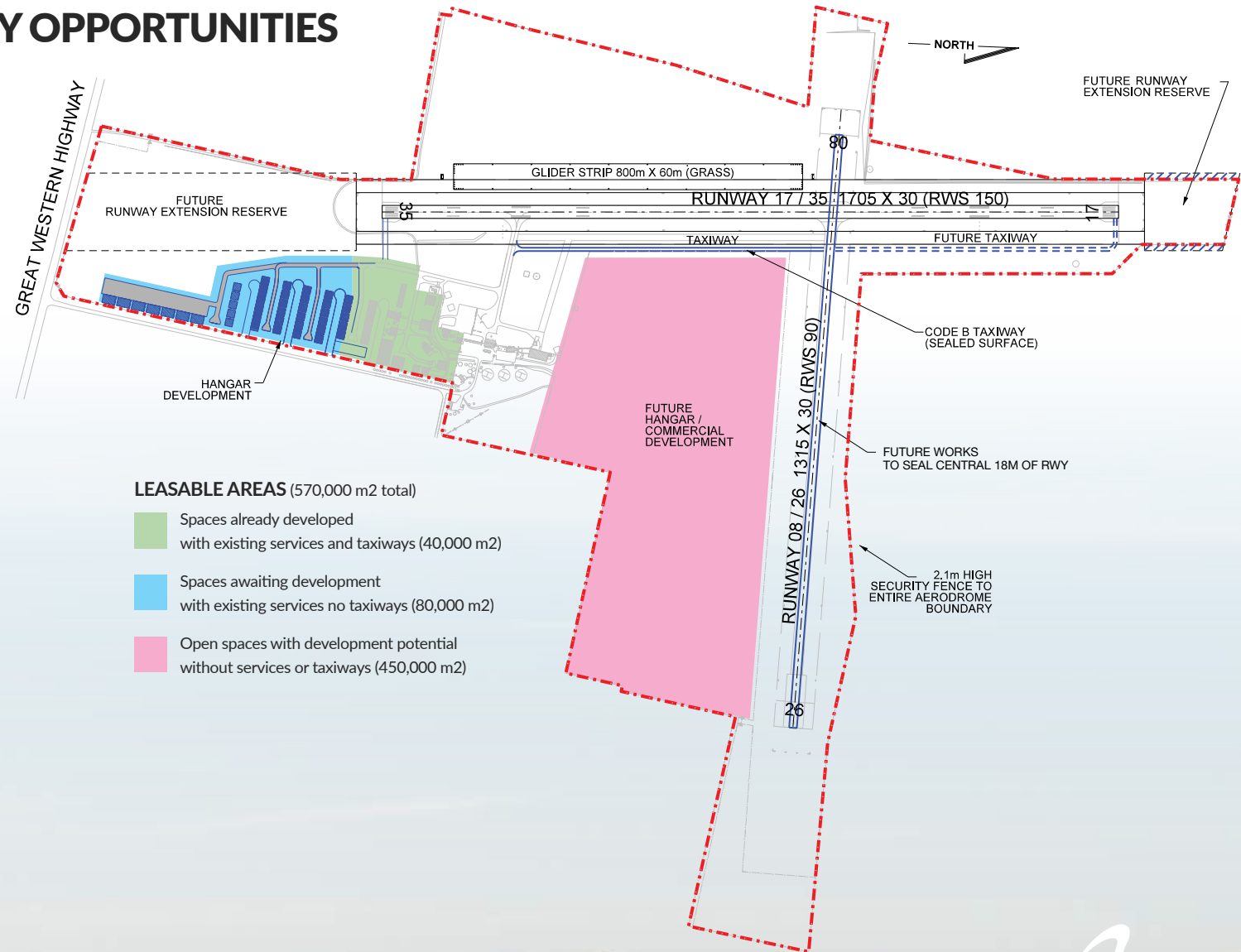
BATHURST GROWTH

Bathurst Regional Council has a clear master plan for the Bathurst Aerodrome, with a vision and commitment to support the growth of a strong aircraft, transport and freight, manufacturing, technology, tourism, events industries and broader business needs of the region and NSW.

INVEST NOW

Investment opportunities available now at the Bathurst Aerodrome include a number of leasing options, taking advantage of areas already developed, those for imminent development and open spaces with development potential.

These options provide solutions for businesses and individuals looking for immediate, move-in ready solutions, those preferring some customisation within a short timeframe, and those looking for open areas for intricately customisable solutions and time to plan and develop the perfect solution.



INVEST NOW

FOR GENERAL ENQUIRIES:

Manager Economic Development
Bathurst Regional Council
158 Russell Street
02 6333 6111
council@bathurst.nsw.gov.au

BATHURST AERODROME

INVEST NOW



BATHURST
REGIONAL
COUNCIL

MOUNT
PANORAMA
BATHURST 200